

EDÍCIA ZDRAVOTNÍCKA ŠTATISTIKA

Potraty v SR 2006

Abortions in
the Slovak Republic 2006



NÁRODNÉ
CENTRUM
ZDRAVOTNÍCKYCH
INFORMÁCIÍ

EDÍCIA ZDRAVOTNÍCKA ŠTATISTIKA

Potraty v SR 2006

Abortions in
the Slovak Republic 2006

Ročník 2007
ZŠ-7/2007

© Národné centrum zdravotníckych informácií. Bratislava 2007

811 09 Bratislava
Lazaretská 26

Tel.: 02/ 57 26 93 01
Fax: 02/52 63 54 90
E-mail: daniela.brasenova@nczisk.sk
Internet: www.nczisk.sk

Rozmnožovanie obsahu tejto publikácie, ako aj jednotlivých častí, v pôvodnej alebo upravenej podobe, je možné len s písomným súhlasom Národného centra zdravotníckych informácií. Údaje, ktoré sú obsahom tejto publikácie, je možné použiť len s uvedením zdroja.

Copying contents of this publication either whole or single parts, both in original and adjusted form is possible only unless the National Health Information Center gives written permission. Data of this publication can be used only with identification of the source.

Obsah

Úvod

Graf 1 Vývoj potratov na Slovensku v rokoch 1960 – 2006

Graf 2 Vývoj počtu živonarodených detí a UPT v rokoch 1960 – 2006

Tabuľka 1 Vývoj potratov v rokoch 1960 – 2006

Graf 3 Vývoj potratov a UPT na 100 narodených v rokoch 1960 – 2006

Graf 4 Vývoj potratov a UPT na 100 ukončených tehotenstiev v rokoch 1960 – 2006

Tabuľka 2 Potratovosť podľa trvalého bydliska ženy

Graf 5 Štruktúra potratov podľa druhu

Graf 6 Vývoj počtu potratov na 1 000 obyvateľov v rokoch 1960 – 2006

Graf 7 Vývoj počtu UPT na 100 potratov v rokoch 1960 – 2006

Mapa 1 Spontánne potraty na 1 000 žien fertilného veku

Mapa 2 UPT na 1 000 žien fertilného veku

Tabuľka 3 Potraty podľa druhu a územia trvalého bydliska ženy

Graf 8 Počet UPT podľa veku ženy v Slovenskej republike

Tabuľka 4 Potraty podľa druhu a veku ženy v Slovenskej republike

Tabuľka 4.1 Potraty podľa druhu a veku ženy v Bratislavskom kraji

Tabuľka 4.2 Potraty podľa druhu a veku ženy v Trnavskom kraji

Tabuľka 4.3 Potraty podľa druhu a veku ženy v Trenčianskom kraji

Tabuľka 4.4 Potraty podľa druhu a veku ženy v Nitrianskom kraji

Tabuľka 4.5 Potraty podľa druhu a veku ženy v Žilinskom kraji

Tabuľka 4.6 Potraty podľa druhu a veku ženy v Banskobystrickom kraji

Tabuľka 4.7 Potraty podľa druhu a veku ženy v Prešovskom kraji

Tabuľka 4.8 Potraty podľa druhu a veku ženy v Košickom kraji

Graf 9 UPT podľa počtu živonarodených detí pred potratom

Tabuľka 5 Potraty podľa druhu, trvalého bydliska ženy a počtu živonarodených detí pred potratom

| | |
|------------|---|
| Tabuľka 6 | Potraty podľa druhu, počtu živonarodených detí pred potratom a vekovej skupiny ženy |
| Tabuľka 7 | Potraty podľa druhu, rodinného stavu a územia trvalého bydliska ženy |
| Tabuľka 8 | Potraty podľa druhu a vzdelania ženy |
| Tabuľka 9 | Potraty podľa druhu a veku plodu (v týždňoch) |
| Graf 10 | Vývoj počtu UPT podľa veku ženy |
| Tabuľka 10 | Potraty podľa druhu, veku plodu a územia zdravotníckeho zariadenia |
| Tabuľka 11 | Potraty podľa druhu, veku a hmotnosti plodu |
| Tabuľka 12 | Potraty podľa počtu doterajších pôrodov, druhu terajšieho potratu a územia trvalého bydliska ženy |
| Tabuľka 13 | Potraty podľa počtu doterajších umelých prerušení tehotenstva, druhu terajšieho potratu a územia trvalého bydliska ženy |
| Tabuľka 14 | Potraty podľa počtu doterajších spontánných potratov, druhu terajšieho potratu a územia trvalého bydliska ženy |
| Tabuľka 15 | Potraty podľa druhu terajšieho potratu, vekovej skupiny a územia trvalého bydliska ženy – ženy doteraz bez potratu a pôrodu |
| Tabuľka 16 | Potraty podľa druhu terajšieho potratu, vekovej skupiny ženy – ženy doteraz bez pôrodu a s aspoň jedným UPT |
| Tabuľka 17 | Potraty podľa druhu terajšieho potratu, vekovej skupiny ženy – ženy doteraz bez pôrodu a s aspoň jedným spontánnym potratom |
| Tabuľka 18 | Potraty podľa druhu terajšieho potratu, vekovej skupiny ženy – ženy doteraz s aspoň jedným pôrodom a jedným UPT |
| Tabuľka 19 | Potraty podľa druhu, užívania vnútromaternicovej antikoncepcie a územia trvalého bydliska ženy |
| Tabuľka 20 | Potraty podľa druhu a územia zdravotníckeho zariadenia |
| Mapa | Slovenská republika – okresy |

Content

Introduction

Graph 1 Trend in abortions in Slovakia within years 1960 – 2006

Graph 2 Trend in number of live birth children and IA within years 1960 – 2006

Table 1 Trend in abortions within years 1960 – 2006

Graph 3 Trend in abortions and IA per 100 births within years 1960 – 2006

Graph 4 Trend in abortions and IA per 100 terminated pregnancies within years 1960 – 2006

Table 2 Abortions rate according to permanent address of female

Graph 5 Abortions structure according to the type

Graph 6 Trend in number of abortions per 1 000 population within years 1960 – 2006

Graph 7 Trend in number of Induced Abortions (IA) per 100 abortions within years 1960 – 2006

Map 1 Spontaneous abortions per 1 000 females in fertile age

Map 2 IA per 1 000 females in fertile age

Table 3 Abortions according to the type and territory of permanent address of female

Graph 8 Number of IA according to age of female in the Slovak Republic

Table 4 Abortions according to the type and age of female in the Slovak Republic

Table 4.1 Abortions according to the type and age of female in Bratislava region

Table 4.2 Abortions according to the type and age of female in Trnava region

Table 4.3 Abortions according to the type and age of female in Trenčín region

Table 4.4 Abortions according to the type and age of female in Nitra region

Table 4.5 Abortions according to the type and age of female in Žilina region

Table 4.6 Abortions according to the type and age of female in Banská Bystrica region

Table 4.7 Abortions according to the type and age of female in Prešov region

Table 4.8 Abortions according to the type and age of female in Košice region

Graph 9 IA according to number of live birth children before abortion

Table 5 Abortions according to the type, permanent address of female and number of live birth children before abortion

- Table 6 Abortions according to the type, number of live birth children before abortion and age group of female
- Table 7 Abortions according to the type, marital status and territory of permanent address of female
- Table 8 Abortions according to the type and educational attainment of female
- Table 9 Abortions according to the type and age of fetus (in weeks)
- Graph 10 Trend of number of IA according to female age
- Table 10 Abortions according to the type, fetus age and health facility territory
- Table 11 Abortions according to the type, age and weight of fetus
- Table 12 Abortions according to number of deliveries to date, the type of present abortion and territory of female permanent address
- Table 13 Abortions according to number of induced abortions to date, the type of present abortion and territory of permanent address of female
- Table 14 Abortions according to number of spontaneous abortions to date, the type of present abortion and territory of female permanent address
- Table 15 Abortions according to the type of present abortion, age group and territory of female permanent address – females without abortion and delivery to date
- Table 16 Abortions according to the type of present abortion, female age group – females without delivery to date and at least with one IA
- Table 17 Abortions according to the type of present abortion, age group of female – females without delivery to date and at least with one spontaneous abortion
- Table 18 Abortions according to the type of present abortion, age group of female – females at least with one delivery and one IA to date
- Table 19 Abortions according to the type, using of intrauterine contraception and territory of female permanent address
- Table 20 Abortions according to the type and territory of health facility
- Map The Slovak Republic – districts

Úvod

Odbornej verejnosti predkladáme publikáciu Potraty v SR 2006, ktorá vychádza v edícii Zdravotnícka štatistika. Publikácia bola prvýkrát vydaná v roku 1960 v spolupráci s ÚZIS-om Praha, ktorá až do roku 1992 zahŕňala federálne údaje rozdelené na Českú a Slovenskú republiku.

Podkladom na spracovanie štatistických údajov obsiahnutých v predkladanej publikácii je formulár *Žiadosť o umelé prerušenie tehotenstva a hlásenie potratu*.

Povinnému hláseniu podliehajú všetky druhy potratov – spontánne (v minulosti používaný názov samovoľné), umelé prerušenia tehotenstva (UPT) a ostatné potraty vrátane prípadov ukončenia mimomaternicového tehotenstva vykonané v zdravotníckych zariadeniach (štátnych a neštátnych) v SR. Žiadosti o umelé prerušenie tehotenstva, ktoré neboli realizované, nepodliehajú hláseniu.

Povinnosť hlásiť všetky druhy potratov vyplýva z platných legislatívnych noriem. Zber hlásení a spracovanie za rezort zdravotníctva v rámci Štátneho informačného systému (ŠIS) vykonáva Národné centrum zdravotníckych informácií (NCZI, SR), ktoré tiež zabezpečuje v mesačnej periodicite prípravu a kontrolu sledovaných údajov a odovzdanie dátových súborov ŠÚ SR na účely demografickej štatistiky.

Problém sledovania mimomaternicových tehotenstiev sa od roku 1958 rieši takto:

- v rokoch 1958 – 1986 sa mimomaternicové tehotenstvá neevidovali v potratoch,
- v rokoch 1987 – 1989 boli mimomaternicové tehotenstvá zahrnuté do skupiny UPT,
- od roku 1990 – 1996 boli mimomaternicové tehotenstvá zahrnuté len v počte potratov spolu.

Od roku 1997 na základe metodických zmien bola úprava triedenia „Druhu potratu“ na: spontánny, legálne UPT do 8. týždňa, legálne UPT od 9. do 12. týždňa, legálne UPT od 13. do 24. týždňa, mimomaternicové tehotenstvo, iný potrat, v ktorom sú zahrnuté napr. Missed abortion, Mola hydatidosa (Missed abortion, Mola hydatidosa boli zahrnuté v tejto položke už od roku 1994) a nelegálne UPT. Takto sú vypracované všetky tabuľky od tabuľky 3.

Vo vývojovej tabuľke 1 nie sú započítané mimomaternicové tehotenstvá. Táto tabuľka je vypracovaná pre gynekológov na účely medzinárodného porovnávania.

Publikácia obsahuje vývojové rady vybraných údajov za roky 1960 – 2006 v SR a podľa krajov a okresov za rok 2006.

Väčšia časť tabuliek poskytuje údaje o potratoch podľa územného členenia trvalého bydliska ženy (trvalé bydlisko v SR). Výnimku tvoria tabuľky 10 a 20, v ktorých sú údaje podľa územného členenia zdravotníckeho zariadenia, v ktorom bol potrat vykonaný.

V roku 2006 bolo zaznamenaných 19 054 potratov (vrátane mimomaternicových tehotenstiev) – o 278 menej ako v predchádzajúcom roku. V prepočte na 100 živonarodených detí to predstavuje 35,0 % a na 1 000 žien vo fertilnom veku (15 – 44 rokov) 15,5 ‰. V roku 2006 bolo vykonaných 11 971 umelých prerušení tehotenstva (UPT), čo predstavuje pokles o 290 oproti roku 2005. Zo zdravotných dôvodov bolo vykonaných 2 003 UPT. V roku 2006 nebol zaznamenaný žiadny nelegálny potrat v SR.

Introduction

We hand over *Abortions in the Slovak Republic 2006* – a publication dedicated for the professional public released in the edition *Health Statistics*. First time it was published in 1960 under cooperation with Institute for Health Information and Statistics in Prague, which covered federal data split to Czech and Slovak Republics up to 1992.

Base for processing statistical data contained in given publication is the template Request for induced interruption of pregnancy and abortion report.

All sorts of abortions are liable to mandatory reporting – spontaneous (self-acting in the past), induced interruption of pregnancy, and other abortions including cases of terminated ectopic pregnancies performed in health care facilities (state-owned or private) in SR Requests for induced interruption of pregnancy (IIP) which were not accorded are not liable to reporting.

The duty to report all sorts of abortions results from valid legal standards. Collection of reports and processing on behalf of the health service in frame of the State Information System is performed by the National Health Information center, which on a monthly basis assures preparation and checking of monitored data, and handing over the data files to the Statistical Office of SR for the purpose of demographical statistics.

The issue of ectopic pregnancies since 1958 has been solved as follows:

- in period 1958 – 1986 ectopic pregnancies were not reported among abortions,
- in period 1987 – 1989 ectopic pregnancies were included to the group of IIP,
- in period 1990 – 1996 ectopic pregnancies were included to the total abortions.

Since 1997 based on methodical changes the "Sort of abortion" was adjusted as follows: spontaneous, legal IIP up to 8th week, legal IIP from 9th to 12th week, legal IIP from 13th to 24th week, ectopic pregnancy, other abortion, including e. g. missed abortion, hydatidiform mole (missed abortion, hydatidiform mole were included to this item already since 1994), and illegal IIP. All tables beginning with 3 are processed in this term.

The evolutionary Table 1 does not include ectopic pregnancies. This table is dedicated for the gynecologists for the sake of international comparison.

The publication contains development rows of selected data of the period 1960 – 2006 in SR, and data by counties and districts in 2006.

Major part of tables provides data on abortions by territorial split of mother's residence (permanent address in SR) saving tables 10 and 20, where data are sorted by territorial reference of the abortion performing care facility.

19 054 abortions were performed in 2006 (including ectopic pregnancies), which is by 278 less than in the year before. Calculated to 100 live born children it represents 35,0 % and 15,5 ‰ per 1 000 females in fertile age (15 – 44). 11 971 induced interruptions (IIP) were performed in 2006 which represents a decrease by 290 compared with 2005. 2 003 IIP were performed from medical reasons. No illegal abortion was recorded in 2006 in SR.

VYSVETLENIE SYMBOLOV

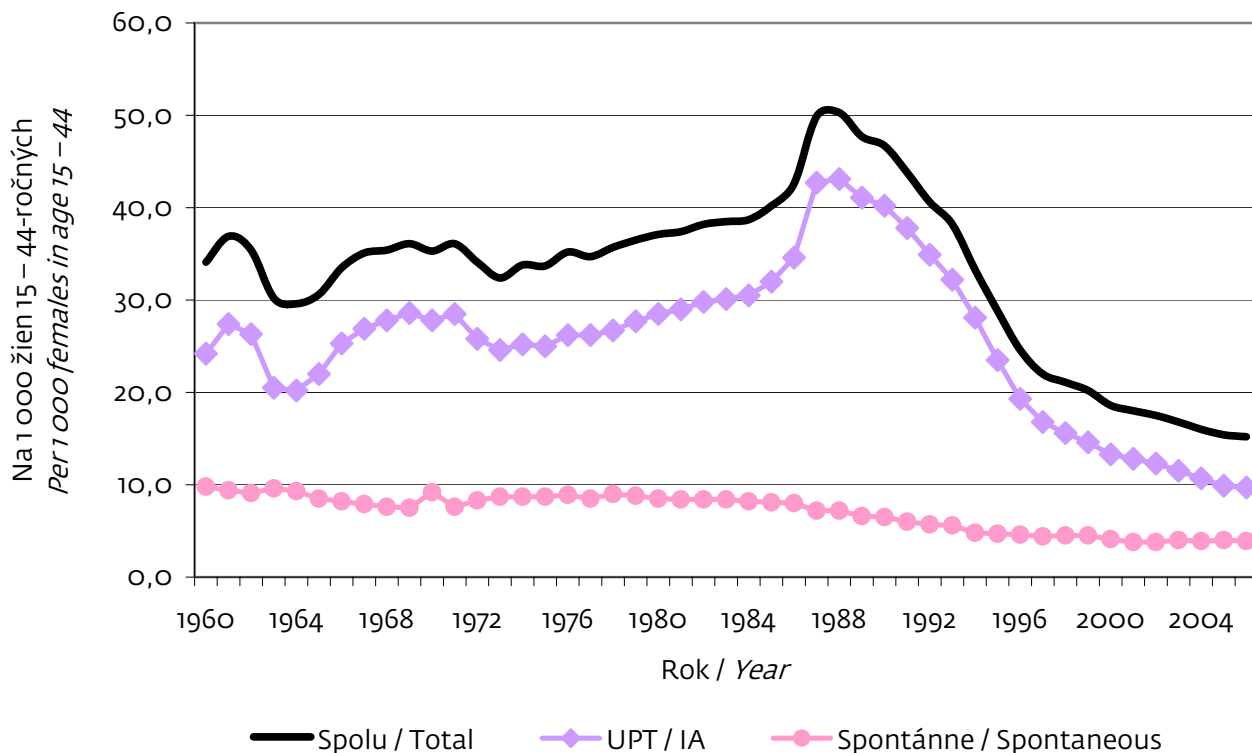
CLARIFICATION OF SYMBOLS

| | | | |
|--------------------------------------|-------------|--|---|
| Ležatá čiarka <i>Macron</i> | (–) | v tabuľke na mieste čísla znamená, že sa jav nevyskytoval | <i>in the place of a number denotes that the phenomenon did not occur</i> |
| Nula <i>Zero</i> | (0,0; 0,00) | znamená viac ako nulu, ale menej ako najmenšiu jednotku vyjadriteľnú v tabuľke | <i>denotes the magnitude more than zero but less than the least unit expressible in the table</i> |
| Bodka <i>Dot</i> | (.) | na mieste čísla znamená, že údaj nie je k dispozícii alebo je nespoľahlivý | <i>in the place of a number denotes that figure is not available or reliable</i> |
| Ležatý krížik <i>Cross italic</i> | (x) | znamená, že zápis nie je možný z logických dôvodov | <i>means that the entry is not possible for logical reasons</i> |
| Znak zlomu <i>Break symbol</i> | (↯) | znamená prerušenie porovnateľnosti časového radu z metodických alebo iných dôvodov | <i>means that the comparability of data series is disconnected due to methodology or another reason</i> |

VÝVOJ POTRATOV NA SLOVENSKU V ROKOCH 1960 – 2006

TREND IN ABORTIONS IN SLOVAKIA WITHIN YEARS 1960 – 2006

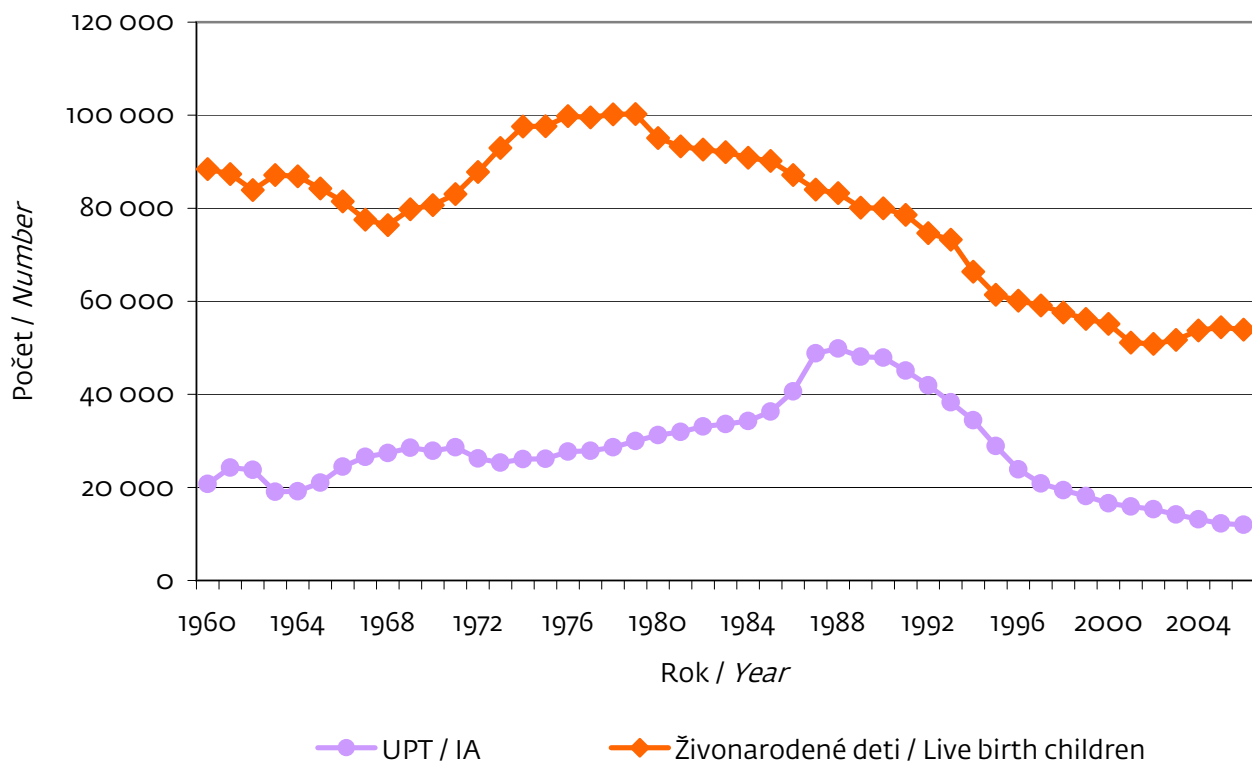
Graf 1



VÝVOJ POČTU ŽIVONARODENÝCH DETÍ A UPT V ROKOCH 1960 – 2006

TREND IN NUMBER OF LIVE BIRTH CHILDREN AND IA WITHIN YEARS 1960 – 2006

Graf 2



VÝVOJ POTRATOV V ROKOCH 1960 – 2006

TREND IN ABORTIONS WITHIN YEARS 1960 – 2006

Tabuľka 1
1/4

| Rok Year | Počet potratov ¹⁾ / Number of abortions ¹⁾ | | | | Potraty / Abortions | | Zo 100 ukončených tehotenstiev bolo potratov From 100 terminated pregnancies abortions were | Zo 100 potratov bolo UPT From 100 abortions IA were |
|-------------|--|-----------|----------------------------|--------------------|--|---|--|--|
| | spolu total | UPT IA | spontánných spontaneous | ostatných other | na 1 000 obyvateľov per 1 000 inhabitants | na 100 narodených per 100 births | | |
| 1960 | 29 389 | 20 738 | 8 599 | 52 | 7,4 | 32,9 | 24,7 | 70,6 |
| 1965 | 29 417 | 21 037 | 8 351 | 29 | 6,7 | 34,6 | 25,7 | 71,5 |
| 1970 | 35 565 | 27 873 | 7 691 | 1 | 7,9 | 43,7 | 30,4 | 78,4 |
| 1975 | 35 437 | 26 160 | 9 263 | 14 | 7,5 | 36,0 | 26,5 | 73,8 |
| 1980 | 40 691 | 31 240 | 9 421 | 30 | 8,2 | 42,5 | 29,8 | 76,8 |
| 1981 | 41 387 | 31 943 | 9 413 | 31 | 8,2 | 44,1 | 30,6 | 77,2 |
| 1982 | 42 532 | 33 107 | 9 401 | 24 | 8,4 | 45,6 | 31,3 | 77,8 |
| 1983 | 43 071 | 33 625 | 9 410 | 36 | 8,5 | 46,5 | 31,8 | 78,1 |
| 1984 | 43 594 | 34 268 | 9 297 | 29 | 8,5 | 47,7 | 32,3 | 78,6 |
| 1985 | 45 594 | 36 283 | 9 272 | 39 | 8,8 | 50,3 | 33,5 | 79,6 |
| 1986 | 50 124 | 40 624 | 9 468 | 32 | 9,7 | 57,2 | 36,4 | 81,0 |
| 1987 | 57 125 | 48 825 | 8 294 | 6 | 10,9 | 67,7 | 40,4 | 85,5 |
| 1988 | 58 199 | 49 847 | 8 352 | – | 11,1 | 69,6 | 41,1 | 85,8 |
| 1989 | 55 803 | 48 097 | 7 706 | – | 10,6 | 69,3 | 40,9 | 86,3 |
| 1990 | 55 640 | 47 901 | 7 739 | – | 10,5 | 69,2 | 40,9 | 86,1 |
| 1991 | 52 297 | 45 098 | 7 182 | 17 | 9,9 | 65,0 | 39,7 | 86,2 |
| 1992 | 48 793 | 41 923 | 6 865 | 5 | 9,2 | 65,1 | 39,4 | 85,9 |
| 1993 | 45 041 | 38 302 | 6 702 | 37 | 8,5 | 60,1 | 37,4 | 85,0 |
| 1994 | 40 813 | 34 432 | 5 854 | 527 | 7,6 | 61,2 | 37,8 | 84,4 |
| 1995 | 35 348 | 28 887 | 5 716 | 745 | 6,6 | 57,3 | 36,4 | 81,7 |
| 1996 | 30 403 | 23 863 | 5 712 | 828 | 5,7 | 49,3 | 33,0 | 78,5 |
| 1997 | 27 312 | 20 850 | 5 480 | 981 | 5,1 | 46,0 | 31,5 | 76,3 |
| 1998 | 26 186 | 19 395 | 5 549 | 1 241 | 4,9 | 44,1 | 30,6 | 74,1 |
| 1999 | 25 090 | 18 141 | 5 608 | 1 341 | 4,7 | 44,4 | 30,8 | 72,3 |
| 2000 | 23 133 | 16 580 | 5 125 | 1 427 | 4,3 | 41,8 | 29,7 | 71,7 |
| 2001 | 22 386 | 15 899 | 4 766 | 1 721 | 4,1 | 40,4 | 29,0 | 71,0 |
| 2002 | 21 735 | 15 301 | 4 759 | 1 675 | 4,0 | 39,3 | 28,2 | 70,4 |
| 2003 | 20 793 | 14 159 | 4 937 | 1 697 | 3,9 | 40,0 | 28,6 | 68,1 |

VÝVOJ POTRATOV V ROKOCH 1960 – 2006

TREND IN ABORTIONS WITHIN YEARS 1960 – 2006

Tabuľka 1
2/4

| Rok Year | Potraty na 1 000 žien vo fertilnom veku ²⁾ <i>Abortions per 1 000 females in fertile age²⁾</i> | | | UPT IA | | Zo 100 ukončených tehotenstiev bolo UPT <i>From 100 terminated pregnancies IA were</i> | Zo 100 UPT bolo <i>From 100 of IA were</i> | |
|-------------|--|-----------|---------------------------------|--|---|--|--|--|
| | spolu <i>total</i> | UPT IA | spontánne <i>spontaneous</i> | na 1 000 obyvateľov <i>per 1 000 inhabitants</i> | na 100 narodených <i>per 100 births</i> | | legálnych UPT do 8. týždňa <i>legal IA till eighth week</i> | zo zdravotných dôvodov <i>due to health reasons</i> |
| 1960 | 34,1 | 24,2 | 9,8 | 5,2 | 23,2 | 17,5 | . | 12,7 |
| 1965 | 30,6 | 22,0 | 8,5 | 4,8 | 24,7 | 18,4 | . | 23,3 |
| 1970 | 35,3 | 27,8 | 9,2 | 6,2 | 34,3 | 23,8 | . | 22,7 |
| 1975 | 33,7 | 25,0 | 8,7 | 5,5 | 26,6 | 19,6 | . | 19,0 |
| 1980 | 37,1 | 28,5 | 8,5 | 6,3 | 32,6 | 22,9 | . | 15,9 |
| 1981 | 37,4 | 29,0 | 8,4 | 6,4 | 34,0 | 23,6 | . | 16,0 |
| 1982 | 38,2 | 29,8 | 8,4 | 5,5 | 35,5 | 24,4 | . | 15,9 |
| 1983 | 38,5 | 30,1 | 8,4 | 6,6 | 36,3 | 24,8 | . | 15,5 |
| 1984 | 38,7 | 30,5 | 8,2 | 6,7 | 37,5 | 25,4 | . | 15,6 |
| 1985 | 40,2 | 32,0 | 8,1 | 7,0 | 40,0 | 26,6 | . | 15,9 |
| 1986 | 42,6 | 34,6 | 8,0 | 7,8 | 46,4 | 29,5 | . | 15,1 |
| 1987 | 49,9 | 42,7 | 7,2 | 9,3 | 57,8 | 34,5 | 62,0 | 13,9 |
| 1988 | 50,3 | 43,1 | 7,2 | 9,5 | 59,6 | 35,0 | 74,0 | 11,5 |
| 1989 | 47,7 | 41,1 | 6,6 | 9,1 | 59,8 | 35,2 | 76,6 | 11,0 |
| 1990 | 46,7 | 40,2 | 6,5 | 9,0 | 59,6 | 35,1 | 77,6 | 9,0 |
| 1991 | 43,8 | 37,8 | 6,0 | 8,5 | 57,1 | 34,4 | 77,5 | 10,6 |
| 1992 | 40,6 | 34,9 | 5,7 | 7,9 | 55,9 | 33,9 | 80,3 | 11,6 |
| 1993 | 38,2 | 32,2 | 5,6 | 7,2 | 51,1 | 31,8 | 79,4 | 11,5 |
| 1994 | 33,3 | 28,1 | 4,8 | 6,4 | 51,7 | 31,9 | 78,7 | 12,1 |
| 1995 | 28,8 | 23,5 | 4,7 | 5,4 | 46,8 | 29,8 | 72,6 | 16,2 |
| 1996 | 24,6 | 19,3 | 4,6 | 4,4 | 38,7 | 25,9 | 65,6 | 21,4 |
| 1997 | 22,0 | 16,8 | 4,4 | 3,9 | 35,1 | 24,1 | 75,8 | 21,4 |
| 1998 | 21,1 | 15,6 | 4,5 | 3,6 | 32,7 | 22,7 | 75,8 | 18,7 |
| 1999 | 20,2 | 14,6 | 4,5 | 3,4 | 32,1 | 22,1 | 75,0 | 17,7 |
| 2000 | 18,6 | 13,3 | 4,1 | 3,1 | 29,9 | 21,3 | 73,8 | 17,1 |
| 2001 | 18,0 | 12,8 | 3,8 | 2,9 | 28,7 | 20,6 | 74,2 | 16,8 |
| 2002 | 17,5 | 12,3 | 3,8 | 2,8 | 27,6 | 19,8 | 72,1 | 17,1 |
| 2003 | 16,8 | 11,5 | 4,0 | 2,6 | 27,3 | 19,5 | 72,3 | 17,5 |

VÝVOJ POTRATOV V ROKOCH 1960 – 2006

TREND IN ABORTIONS WITHIN YEARS 1960 – 2006

Tabuľka 1
3/4

| Rok Year | Počet potratov ¹⁾ / Number of abortions ¹⁾ | | | | Potraty / Abortions | | Zo 100 ukončených tehotenstiev bolo potratov From 100 terminated pregnancies abortions were | Zo 100 potratov bolo UPT From 100 abortions IA were |
|-------------|--|-----------|----------------------------|--------------------|--|-------------------------------------|--|--|
| | spolu total | UPT IA | spontánnych spontaneous | ostatných other | na 1 000 obyvateľov per 1 000 inhabitants | na 100 narodených per 100 births | | |
| 2004 | 19 734 | 13 146 | 4 768 | 1 820 | 3,7 | 38,0 | 27,5 | 66,6 |
| 2005 | 18 953 | 12 261 | 4 905 | 1 787 | 3,5 | 35,1 | 25,6 | 64,7 |
| 2006 | 18 676 | 11 971 | 4 811 | 1 894 | 3,5 | 34,2 | 25,3 | 64,1 |

Roky 1958 – 1962 podľa zákona SNR č. 68/1957 Zb.

Roky 1963 – 1986 nové predpisy o vykonávaní interrupcií k zákonu SNR č. 68/1957 Zb.

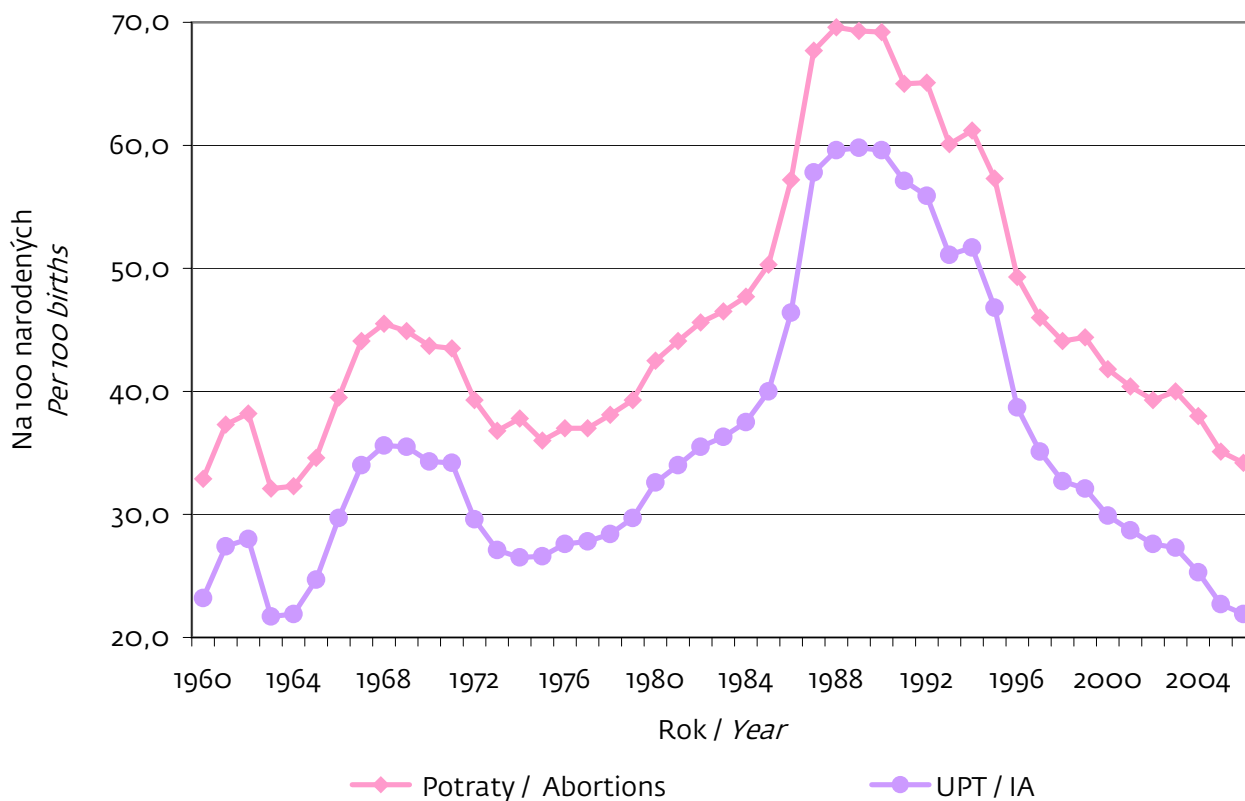
Roky 1987 – 2006 podľa zákona SNR č. 73/1986 Zb.

¹⁾ Počet mimomaternicových tehotenstiev nie je zahrnutý do počtu potratov.²⁾ Fertilný vek: ženy vo veku 15 – 44 rokov (stav k 1. 7. 2005)

VÝVOJ POTRATOV A UPT NA 100 NARODENÝCH V ROKOCH 1960 – 2006

TREND IN ABORTIONS AND IA PER 100 BIRTHS WITHIN YEARS 1960 – 2006

Graf 3



VÝVOJ POTRATOV V ROKOCH 1960 – 2006

TREND IN ABORTIONS WITHIN YEARS 1960 – 2006

Tabuľka 1
4/4

| Rok Year | Potraty na 1 000 žien vo fertilnom veku ²⁾ Abortions per 1 000 females in fertile age ²⁾ | | | UPT IA | | Zo 100 ukončených tehotenstiev bolo UPT From 100 terminated pregnancies IA were | Zo 100 UPT bolo From 100 of IA were | |
|-------------|---|-----------|--------------------------|--|---|--|--|---|
| | spolu total | UPT IA | spontánne spontaneous | na 1 000 obyvateľov per 1 000 inhabitants | na 100 narodených per 100 births | | legálnych UPT do 8. týždňa legal IA till eighth week | zo zdravotných dôvodov due to health reasons |
| 2004 | 16,0 | 10,7 | 3,9 | 2,4 | 25,3 | 18,3 | 72,1 | 18,7 |
| 2005 | 15,4 | 9,9 | 4,0 | 2,3 | 22,7 | 16,6 | 70,7 | 17,6 |
| 2006 | 15,2 | 9,7 | 3,9 | 2,2 | 21,9 | 16,2 | 69,8 | 16,7 |

Years 1958 – 1962 according to Act of the NC No 68/1957 Corpus Juris

Years 1963 – 1986 new regulations on abortions carrying out to Act of the NC No 68/1957 Corpus Juris

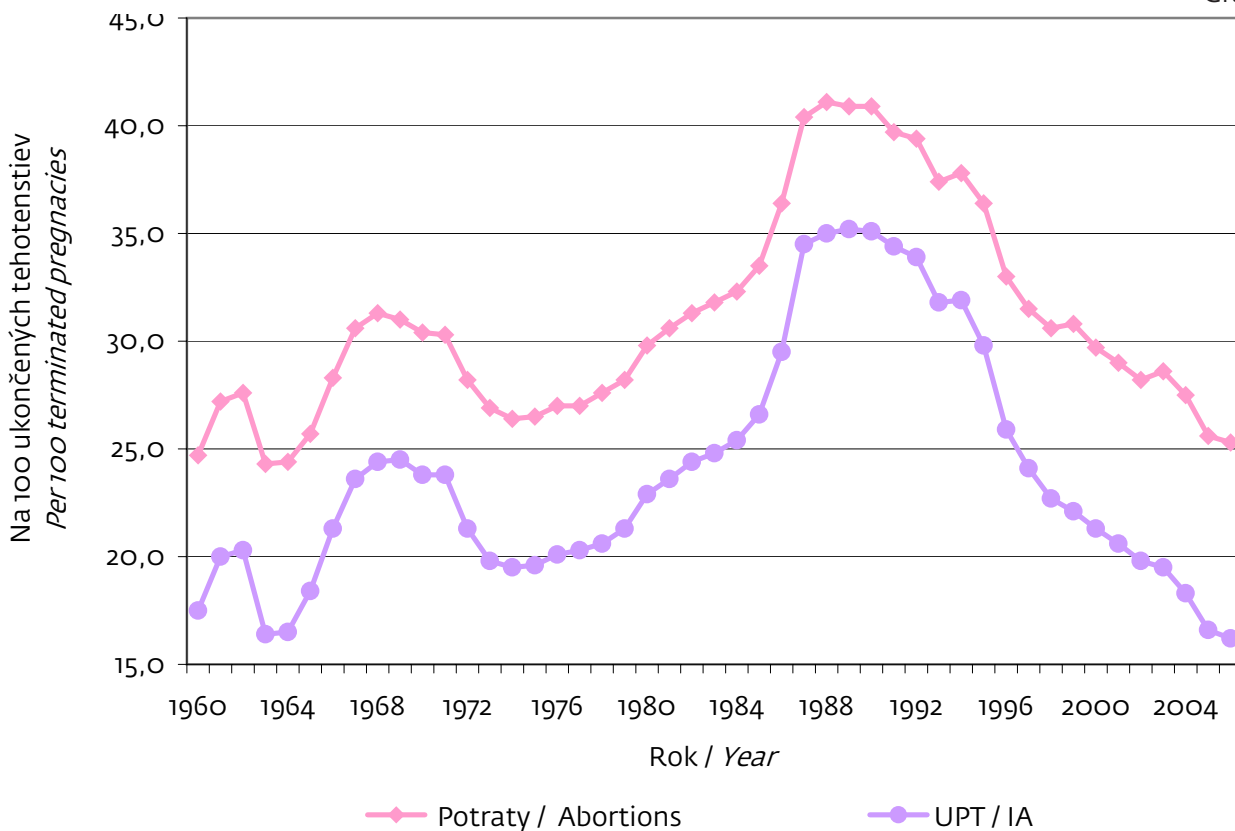
Years 1987 – 2006 according to Act of the NC No 73/1986 Corpus Juris

¹⁾ Number of extrauterine pregnancies is not included in number of abortions²⁾ Fertile age: females in age 15 – 44 (status by 1. July 2005)

VÝVOJ POTRATOV A UPT NA 100 UKONČENÝCH TEHOTENSTIEV V ROKOCH 1960 – 2006

TREND IN ABORTIONS AND IA PER 100 TERMINATED PREGNANCIES WITHIN YEARS 1960 – 2006

Graf 4



POTRATOVOSŤ PODĽA TRVALÉHO BYDLISKA ŽENY

ABORTIONS RATE ACCORDING TO PERMANENT ADDRESS OF FEMALE

Tabuľka 2
1/3

| Územie trvalého bydliska | Potraty na 1 000 žien vo fertilnom veku ¹⁾ | | | Počet potratov na 1 000 obyvateľov | Zo 100 potratov vykonaných UPT | UPT na 1 000 obyvateľov | Zo 100 UPT | |
|--------------------------------|--|-------------|---|---|---|-------------------------------|----------------------------------|--|
| | spontánne | UPT | spolu vrátane mimoma- ternicových tehotenstiev | | | | legálnych UPT do 8. týždňa | UPT zo zdravotných dôvodov ²⁾ |
| Slovenská republika | 3,9 | 9,7 | 15,5 | 3,5 | 62,8 | 2,2 | 69,8 | 16,7 |
| Bratislavský kraj | 4,4 | 10,4 | 15,9 | 3,7 | 65,4 | 2,4 | 72,1 | 13,1 |
| Bratislava I | 7,0 | 11,0 | 19,7 | 3,9 | 56,0 | 2,2 | 78,7 | 11,7 |
| Bratislava II | 4,3 | 10,9 | 16,2 | 3,7 | 66,9 | 2,4 | 74,0 | 15,1 |
| Bratislava III | 5,2 | 10,0 | 16,2 | 3,4 | 61,8 | 2,1 | 74,8 | 9,9 |
| Bratislava IV | 4,1 | 9,8 | 14,8 | 3,6 | 66,2 | 2,4 | 71,0 | 15,8 |
| Bratislava V | 4,6 | 10,5 | 16,0 | 4,0 | 65,2 | 2,6 | 69,5 | 13,3 |
| Malacky | 3,3 | 11,5 | 16,8 | 3,9 | 68,9 | 2,7 | 65,5 | 10,2 |
| Pezinok | 5,0 | 11,5 | 17,2 | 4,0 | 67,1 | 2,7 | 72,8 | 11,3 |
| Senec | 3,3 | 8,3 | 12,2 | 2,9 | 67,9 | 1,9 | 77,8 | 13,9 |
| Trnavský kraj | 3,0 | 9,5 | 14,5 | 3,4 | 65,3 | 2,2 | 70,3 | 15,0 |
| Dunajská Streda | 3,3 | 13,6 | 18,4 | 4,3 | 73,7 | 3,2 | 75,7 | 13,1 |
| Galanta | 4,8 | 10,6 | 17,3 | 4,0 | 60,9 | 2,4 | 70,6 | 14,7 |
| Hlohovec | 2,3 | 8,5 | 12,8 | 2,9 | 66,4 | 1,9 | 54,0 | 12,6 |
| Piešťany | 1,4 | 4,0 | 6,3 | 1,4 | 63,3 | 0,9 | 84,2 | 49,1 |
| Senica | 2,5 | 9,7 | 15,1 | 3,5 | 64,0 | 2,3 | 70,1 | 14,6 |
| Skalica | 2,5 | 7,3 | 11,5 | 2,7 | 63,5 | 1,7 | 81,3 | 16,3 |
| Trnava | 3,0 | 8,8 | 14,4 | 3,3 | 60,8 | 2,0 | 61,5 | 11,3 |
| Trenčiansky kraj | 2,8 | 8,2 | 13,7 | 3,1 | 60,4 | 1,9 | 68,2 | 14,3 |
| Bánovce nad Bebravou | 2,6 | 6,1 | 12,1 | 2,8 | 50,0 | 1,4 | 81,5 | 18,5 |
| Ilava | 2,0 | 7,7 | 12,4 | 2,9 | 61,8 | 1,8 | 67,3 | 12,7 |
| Myjava | 1,6 | 8,3 | 12,2 | 2,7 | 67,5 | 1,8 | 82,7 | 9,6 |
| Nové Mesto nad Váhom | 2,1 | 8,1 | 13,3 | 2,9 | 61,2 | 1,8 | 67,9 | 20,5 |
| Partizánske | 4,1 | 6,4 | 11,5 | 2,6 | 55,3 | 1,4 | 77,9 | 11,8 |
| Považská Bystrica | 2,4 | 6,3 | 12,1 | 2,8 | 52,2 | 1,5 | 69,8 | 11,5 |
| Prievidza | 4,3 | 11,0 | 17,2 | 3,9 | 64,0 | 2,5 | 65,3 | 15,9 |
| Púchov | 1,7 | 6,9 | 12,1 | 2,7 | 56,8 | 1,6 | 69,0 | 7,0 |
| Trenčín | 2,3 | 8,4 | 13,4 | 3,0 | 62,7 | 1,9 | 62,7 | 13,7 |
| Nitriansky kraj | 3,4 | 10,3 | 15,1 | 3,4 | 68,2 | 2,3 | 70,0 | 20,4 |
| Komárno | 5,2 | 14,0 | 20,2 | 4,5 | 69,3 | 3,1 | 75,7 | 31,7 |
| Levice | 4,5 | 9,8 | 15,6 | 3,5 | 62,6 | 2,2 | 72,6 | 28,2 |

POTRATOVOSŤ PODĽA TRVALÉHO BYDLISKA ŽENY

ABORTIONS RATE ACCORDING TO PERMANENT ADDRESS OF FEMALE

Tabuľka 2
2/3

| Territory of permanent address | Abortions per 1 000 females in fertile age ¹⁾ | | | Number of abortions per 1 000 inhabitants | From 100 abortions IA were | IA per 1 000 inhabitants | From 100 IA | |
|--------------------------------------|---|-------------|---|--|----------------------------------|--------------------------------|---------------------------------|--|
| | spontaneous | IA | total including extrauterine pregnancies | | | | legal IA till eighth week | IA due to health reasons ²⁾ |
| Nitra | 2,5 | 8,8 | 12,3 | 2,8 | 71,3 | 2,0 | 63,1 | 8,8 |
| Nové Zámky | 1,7 | 11,1 | 15,9 | 3,5 | 69,6 | 2,5 | 71,2 | 16,2 |
| Šaľa | 3,9 | 12,8 | 17,8 | 4,2 | 72,0 | 3,0 | 70,4 | 25,9 |
| Topoľčany | 3,8 | 8,3 | 12,8 | 2,9 | 64,5 | 1,9 | 68,8 | 13,8 |
| Zlaté Moravce | 3,4 | 6,4 | 10,0 | 2,2 | 64,2 | 1,4 | 60,7 | 11,5 |
| Žilinský kraj | 3,7 | 8,2 | 13,6 | 3,1 | 60,3 | 1,9 | 64,2 | 16,5 |
| Bytča | 1,9 | 5,7 | 9,6 | 2,1 | 59,1 | 1,3 | 82,1 | 17,9 |
| Čadca | 3,8 | 4,9 | 9,9 | 2,3 | 49,8 | 1,1 | 71,4 | 21,9 |
| Dolný Kubín | 4,7 | 6,4 | 12,6 | 2,9 | 50,9 | 1,5 | 64,4 | 15,3 |
| Kysucké Nové Mesto | 4,4 | 9,9 | 16,4 | 3,8 | 60,2 | 2,3 | 70,1 | 15,6 |
| Liptovský Mikuláš | 4,9 | 14,1 | 19,4 | 4,4 | 72,9 | 3,2 | 66,7 | 14,1 |
| Martin | 2,5 | 11,1 | 14,1 | 3,3 | 78,4 | 2,6 | 52,0 | 23,6 |
| Námestovo | 4,2 | 3,8 | 10,2 | 2,3 | 37,8 | 0,9 | 60,8 | 11,8 |
| Ružomberok | 5,0 | 9,1 | 14,8 | 3,3 | 61,3 | 2,0 | 69,7 | 14,3 |
| Turčianske Teplice | 2,5 | 11,5 | 14,3 | 3,1 | 80,4 | 2,5 | 46,3 | 14,6 |
| Tvrdošín | 3,0 | 3,0 | 8,8 | 2,1 | 34,2 | 0,7 | 52,0 | 20,0 |
| Žilina | 3,5 | 8,4 | 15,2 | 3,5 | 55,6 | 1,9 | 67,9 | 12,5 |
| Banskobystrický kraj | 4,1 | 11,7 | 17,3 | 3,9 | 67,6 | 2,7 | 68,9 | 20,9 |
| Banská Bystrica | 3,8 | 9,6 | 15,3 | 3,6 | 62,8 | 2,3 | 72,2 | 23,1 |
| Banská Štiavnica | 6,6 | 16,3 | 24,2 | 5,6 | 67,4 | 3,8 | 50,0 | 20,3 |
| Brezno | 5,6 | 11,8 | 18,0 | 4,0 | 65,5 | 2,6 | 69,6 | 26,9 |
| Detva | 2,2 | 9,1 | 13,6 | 3,0 | 67,0 | 2,0 | 70,1 | 11,9 |
| Krupina | 4,7 | 6,9 | 13,4 | 2,9 | 51,5 | 1,5 | 55,9 | 23,5 |
| Lučenec | 4,5 | 16,3 | 21,4 | 4,8 | 76,1 | 3,7 | 66,3 | 19,3 |
| Poltár | 2,8 | 12,6 | 16,2 | 3,5 | 77,8 | 2,8 | 63,5 | 20,6 |
| Revúca | 4,3 | 13,3 | 20,5 | 4,6 | 65,1 | 3,0 | 68,6 | 23,1 |
| Rimavská Sobota | 3,7 | 15,5 | 21,5 | 4,9 | 72,0 | 3,5 | 72,5 | 21,6 |
| Veľký Krtíš | 4,2 | 9,0 | 13,9 | 3,1 | 64,8 | 2,0 | 75,5 | 13,8 |
| Zvolen | 2,9 | 9,8 | 14,0 | 3,2 | 69,9 | 2,2 | 68,2 | 12,6 |
| Žarnovica | 3,0 | 8,9 | 11,9 | 2,6 | 75,0 | 2,0 | 63,0 | 24,1 |
| Žiar nad Hronom | 6,2 | 10,4 | 18,5 | 4,1 | 56,3 | 2,3 | 73,0 | 27,0 |
| Prešovský kraj | 4,7 | 6,7 | 13,6 | 3,1 | 49,2 | 1,5 | 68,0 | 16,5 |
| Bardejov | 5,3 | 4,7 | 11,0 | 2,5 | 42,9 | 1,1 | 76,8 | 14,6 |
| Humenné | 3,1 | 8,3 | 13,9 | 3,2 | 60,2 | 1,9 | 56,5 | 31,5 |

POTRATOVOSŤ PODĽA TRVALÉHO BYDLISKA ŽENY

ABORTIONS RATE ACCORDING TO PERMANENT ADDRESS OF FEMALE

Tabuľka 2
3/3

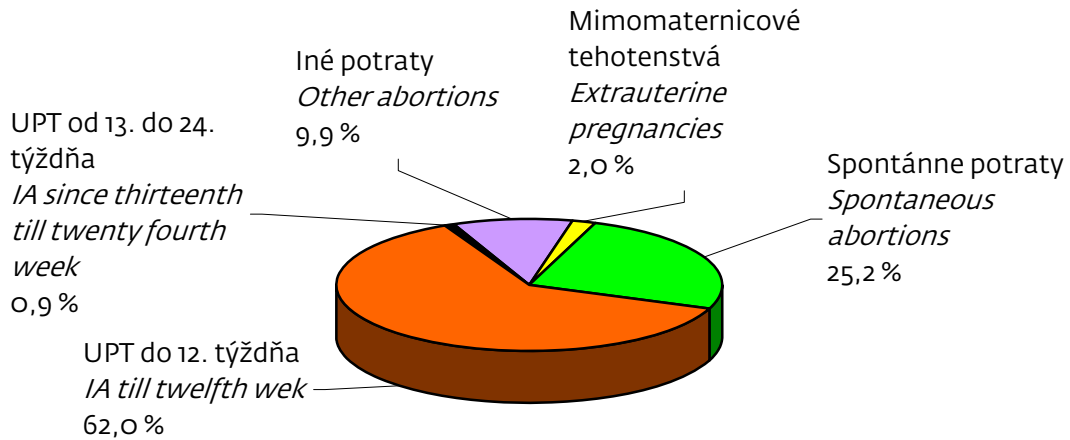
| Územie trvalého bydliska Territory of permanent address | Potraty na 1 000 žien vo fertilnom veku ¹⁾ Abortions per 1 000 females in fertile age ¹⁾ | | | Počet potratov na 1 000 obyvateľov Number of abortions per 1 000 inhabitants | Zo 100 potratov vykonaných UPT From 100 abortions IA were | UPT na 1 000 obyvateľov IA per 1 000 inhabitants | Zo 100 UPT From 100 IA | |
|---|---|-------------|---|---|---|---|---|--|
| | spontánne spontaneous | UPT IA | spolu vrátane mimomaternicových tehotenstiev total including extrauterine pregnancies | | | | legálnych UPT do 8. týždňa legal IA till eighth week | UPT zo zdravotných dôvodov ²⁾ IA due to health reasons ²⁾ |
| Kežmarok | 6,6 | 6,2 | 14,5 | 3,4 | 42,5 | 1,4 | 66,0 | 13,8 |
| Levoča | 7,6 | 10,9 | 19,3 | 4,4 | 56,3 | 2,5 | 57,5 | 13,8 |
| Medzilaborce | 3,1 | 9,8 | 14,9 | 3,1 | 65,8 | 2,0 | 48,0 | 4,0 |
| Poprad | 6,4 | 11,3 | 18,5 | 4,4 | 61,0 | 2,7 | 73,7 | 16,9 |
| Prešov | 3,5 | 3,8 | 10,5 | 2,4 | 36,1 | 0,9 | 73,4 | 12,6 |
| Sabinov | 4,5 | 3,6 | 11,7 | 2,6 | 31,0 | 0,8 | 60,0 | 11,1 |
| Snina | 3,6 | 7,6 | 12,1 | 2,8 | 63,3 | 1,8 | 60,9 | 14,5 |
| Stará Ľubovňa | 8,2 | 2,8 | 11,8 | 2,7 | 23,7 | 0,6 | 63,6 | 15,2 |
| Stropkov | 2,3 | 8,7 | 14,8 | 3,4 | 58,6 | 2,0 | 68,3 | 22,0 |
| Svidník | 1,9 | 8,2 | 13,4 | 3,1 | 61,5 | 1,9 | 78,1 | 17,2 |
| Vranov nad Topľou | 2,7 | 8,5 | 15,7 | 3,6 | 54,0 | 1,9 | 69,3 | 14,7 |
| Košický kraj | 4,6 | 12,7 | 19,5 | 4,5 | 65,2 | 2,9 | 73,6 | 15,6 |
| Gelnica | 4,5 | 13,9 | 21,1 | 4,5 | 66,0 | 3,0 | 72,0 | 15,1 |
| Košice I | 5,3 | 15,5 | 22,6 | 5,5 | 68,4 | 3,8 | 81,6 | 11,7 |
| Košice II | 3,6 | 13,0 | 18,0 | 4,4 | 72,1 | 3,2 | 82,4 | 16,0 |
| Košice III | 6,0 | 12,9 | 20,2 | 4,9 | 63,8 | 3,1 | 83,2 | 12,6 |
| Košice IV | 4,5 | 12,8 | 18,8 | 3,9 | 68,2 | 2,7 | 85,5 | 12,5 |
| Košice-okolie | 5,5 | 13,8 | 21,3 | 4,8 | 64,8 | 3,1 | 77,6 | 14,8 |
| Michalovce | 2,9 | 10,0 | 15,8 | 3,6 | 62,9 | 2,3 | 67,9 | 16,9 |
| Rožňava | 4,7 | 17,9 | 25,6 | 5,7 | 70,0 | 4,0 | 63,2 | 23,1 |
| Sobrance | 2,2 | 8,5 | 13,0 | 2,7 | 65,6 | 1,8 | 81,0 | 14,3 |
| Spišská Nová Ves | 5,9 | 9,6 | 17,1 | 3,9 | 56,0 | 2,2 | 61,0 | 17,1 |
| Trebišov | 5,0 | 12,5 | 20,1 | 4,6 | 62,3 | 2,8 | 67,0 | 14,1 |

¹⁾ Fertilný vek: ženy vo veku 15 – 44 rokov (stav k 1. 7. 2005) / Fertile age: females in age 15 – 44 (status by 1. July 2005)²⁾ Všetky UPT vykonané zo zdravotných dôvodov / All IA carried out due to health reasons

ŠTRUKTÚRA POTRATOV PODĽA DRUHU

ABORTIONS STRUCTURE ACCORDING TO THE TYPE

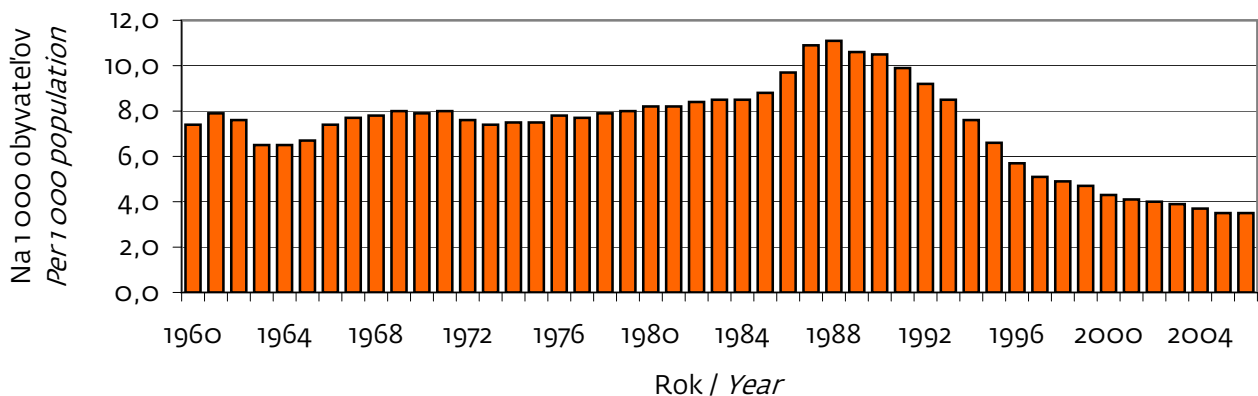
Graf 5



VÝVOJ POČTU POTRATOV NA 1 000 OBYVATEĽOV V ROKOCH 1960 – 2006

TREND IN NUMBER OF ABORTIONS PER 1 000 POPULATION WITHIN YEARS 1960 – 2006

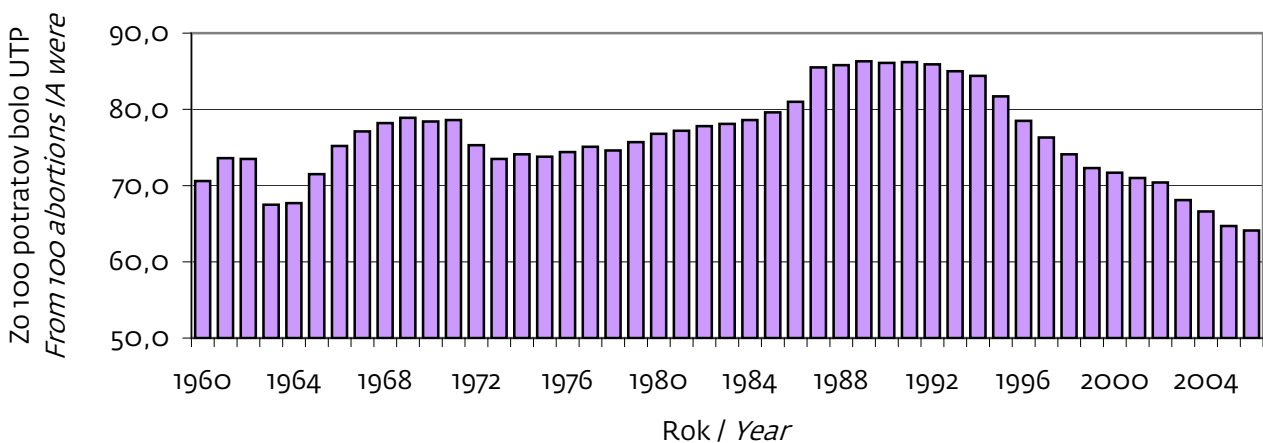
Graf 6



VÝVOJ POČTU UPT NA 100 POTRATOV V ROKOCH 1960 – 2006

TREND IN NUMBER OF INDUCED ABORTIONS (IA) PER 100 ABORTIONS WITHIN YEARS 1960 – 2006

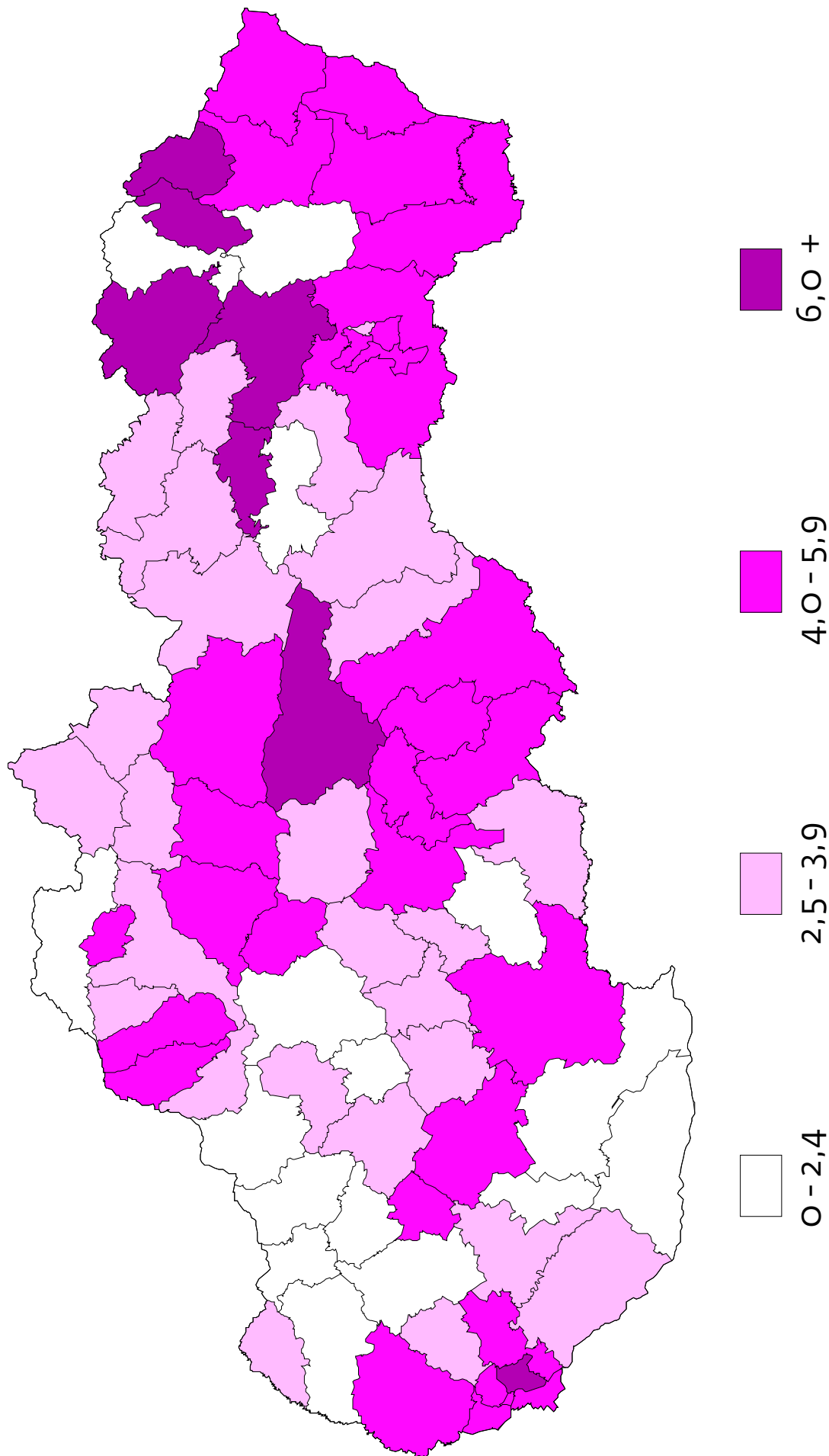
Graf 7



Mapa 1

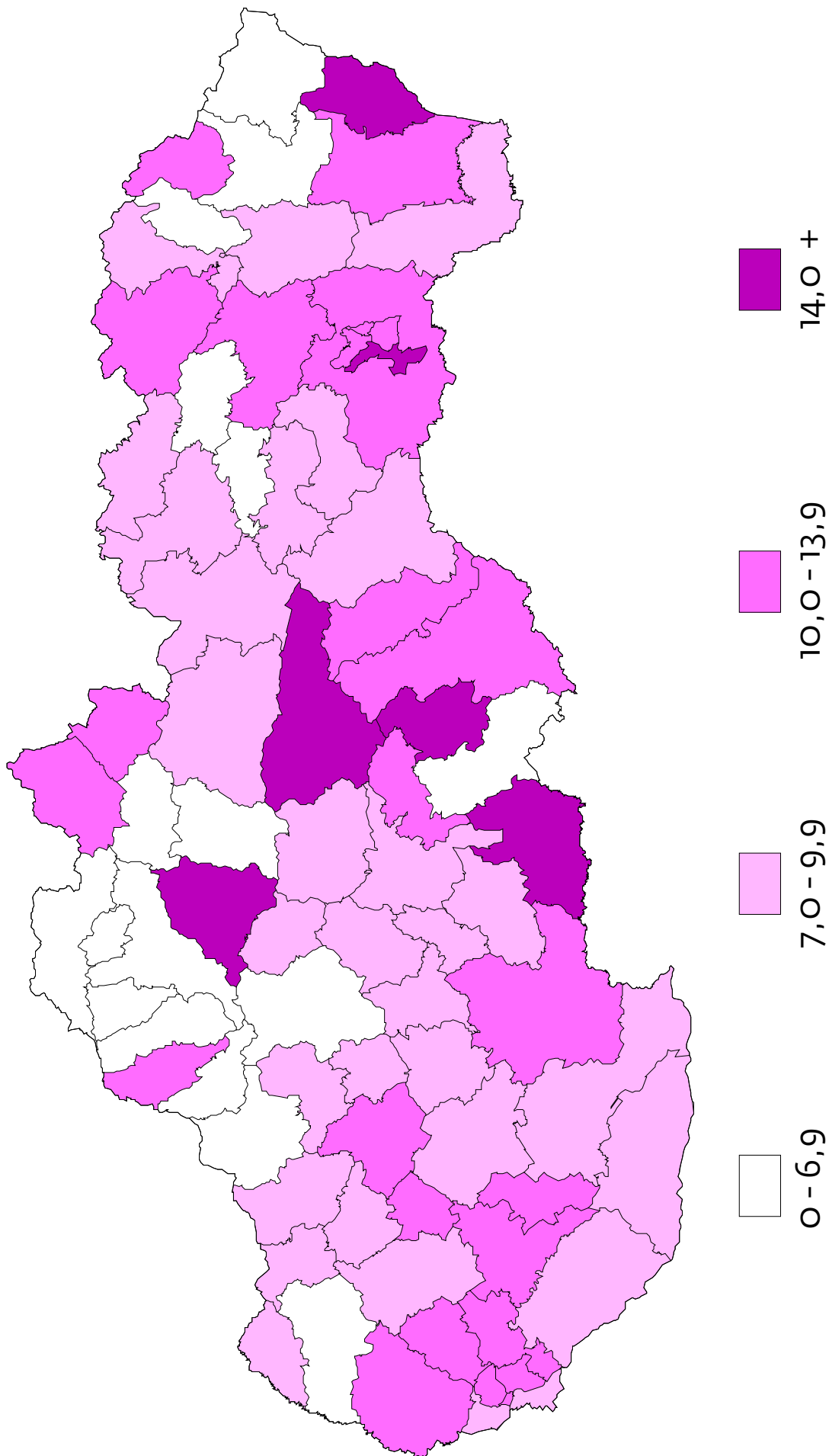
SPONTÁNNNE POTRATY NA 1 000 ŽIEN FERTILNÉHO VEKU

SPONTANEOUS ABORTIONS PER 1 000 FEMALES IN FERTILE AGE



Mapa 2

UPT NA 1 000 ŽIEN FERTILNÉHO VEKU
IA PER 1 000 FEMALES IN FERTILE AGE



POTRATY PODĽA DRUHU A ÚZEMIA TRVALÉHO BYDLISKA ŽENY

ABORTIONS ACCORDING TO THE TYPE AND TERRITORY OF PERMANENT ADDRESS OF FEMALE

Tabuľka 3
1/3

| Územie trvalého bydliska | Spon-tánne potraty | Umelé prerušenie tehotenstva | | | | | | Iné potraty | Mimo-mater-nicové teho-tenstvá | Potraty spolu |
|----------------------------|--------------------|------------------------------|-----------------------------|---------------------|--------------------------------|------------------------------|---------------|--------------|--------------------------------|---------------|
| | | legálne do 8. týždňa | legálne od 9. do 12. týždňa | spolu do 12. týždňa | z toho zo zdra-votných dôvodov | legálne od 13. do 24. týždňa | UPT spolu | | | |
| Slovenská republika | 4 811 | 8 356 | 3 453 | 11 809 | 1 841 | 162 | 11 971 | 1 894 | 378 | 19 054 |
| Bratislavský kraj | 622 | 1 054 | 387 | 1 441 | 170 | 21 | 1 462 | 117 | 33 | 2 234 |
| Bratislava I | 60 | 74 | 19 | 93 | 10 | 1 | 94 | 11 | 3 | 168 |
| Bratislava II | 106 | 196 | 63 | 259 | 34 | 6 | 265 | 19 | 6 | 396 |
| Bratislava III | 68 | 98 | 33 | 131 | 13 | – | 131 | 10 | 3 | 212 |
| Bratislava IV | 92 | 157 | 58 | 215 | 29 | 6 | 221 | 19 | 2 | 334 |
| Bratislava V | 138 | 219 | 90 | 309 | 36 | 6 | 315 | 22 | 8 | 483 |
| Malacky | 50 | 116 | 61 | 177 | 18 | – | 177 | 22 | 8 | 257 |
| Pezinok | 65 | 110 | 40 | 150 | 16 | 1 | 151 | 6 | 3 | 225 |
| Senec | 43 | 84 | 23 | 107 | 14 | 1 | 108 | 8 | – | 159 |
| Trnavský kraj | 390 | 855 | 348 | 1 203 | 170 | 13 | 1 216 | 223 | 32 | 1 861 |
| Dunajská Streda | 90 | 278 | 85 | 363 | 44 | 4 | 367 | 37 | 4 | 498 |
| Galanta | 104 | 163 | 67 | 230 | 33 | 1 | 231 | 39 | 5 | 379 |
| Hlohovec | 24 | 47 | 38 | 85 | 9 | 2 | 87 | 16 | 4 | 131 |
| Piešťany | 20 | 48 | 9 | 57 | 28 | – | 57 | 13 | – | 90 |
| Senica | 36 | 96 | 39 | 135 | 18 | 2 | 137 | 32 | 9 | 214 |
| Skalica | 27 | 65 | 14 | 79 | 12 | 1 | 80 | 17 | 2 | 126 |
| Trnava | 89 | 158 | 96 | 254 | 26 | 3 | 257 | 69 | 8 | 423 |
| Trenčiansky kraj | 383 | 769 | 338 | 1 107 | 141 | 20 | 1 127 | 315 | 41 | 1 866 |
| Bánovce nad Bebravou | 23 | 44 | 10 | 54 | 10 | – | 54 | 29 | 2 | 108 |
| Ilava | 29 | 74 | 33 | 107 | 11 | 3 | 110 | 37 | 2 | 178 |
| Myjava | 10 | 43 | 9 | 52 | 5 | – | 52 | 11 | 4 | 77 |
| Nové Mesto nad Váhom | 29 | 76 | 31 | 107 | 18 | 5 | 112 | 36 | 6 | 183 |
| Partizánske | 44 | 53 | 14 | 67 | 7 | 1 | 68 | 10 | 1 | 123 |
| Považská Bystrica | 36 | 67 | 26 | 93 | 8 | 3 | 96 | 46 | 6 | 184 |
| Prievidza | 137 | 230 | 119 | 349 | 53 | 3 | 352 | 52 | 9 | 550 |
| Púchov | 18 | 49 | 22 | 71 | 5 | – | 71 | 31 | 5 | 125 |
| Trenčín | 57 | 133 | 74 | 207 | 24 | 5 | 212 | 63 | 6 | 338 |
| Nitriansky kraj | 536 | 1 153 | 474 | 1 627 | 316 | 19 | 1 646 | 182 | 49 | 2 413 |
| Komárno | 125 | 253 | 75 | 328 | 100 | 6 | 334 | 15 | 8 | 482 |
| Levice | 118 | 188 | 69 | 257 | 71 | 2 | 259 | 27 | 10 | 414 |
| Nitra | 93 | 207 | 119 | 326 | 27 | 2 | 328 | 30 | 9 | 460 |
| Nové Zámky | 56 | 259 | 101 | 360 | 55 | 4 | 364 | 88 | 15 | 523 |

POTRATY PODĽA DRUHU A ÚZEMIA TRVALÉHO BYDLISKA ŽENY

ABORTIONS ACCORDING TO THE TYPE AND TERRITORY OF PERMANENT ADDRESS OF FEMALE

Tabuľka 3
2/3

| Territory of permanent address | Spontaneous abortions | Induced abortion | | | | | | Other abortions | Extrauterine pregnancies | Abortions total |
|--------------------------------|-----------------------|------------------------|-------------------------------------|-------------------------|--------------------------------|--|--------------|-----------------|--------------------------|-----------------|
| | | legal till eighth week | legal since ninth till twelfth week | total till twelfth week | of which due to health reasons | legal since thirteenth till twenty fourth week | IA total | | | |
| Šaľa | 49 | 114 | 46 | 160 | 40 | 2 | 162 | 12 | 2 | 225 |
| Topoľčany | 63 | 95 | 41 | 136 | 17 | 2 | 138 | 8 | 5 | 214 |
| Zlaté Moravce | 32 | 37 | 23 | 60 | 6 | 1 | 61 | 2 | – | 95 |
| Žilinský kraj | 590 | 838 | 448 | 1 286 | 196 | 19 | 1 305 | 205 | 63 | 2 163 |
| Bytča | 13 | 32 | 6 | 38 | 6 | 1 | 39 | 13 | 1 | 66 |
| Čadca | 81 | 75 | 27 | 102 | 20 | 3 | 105 | 11 | 14 | 211 |
| Dolný Kubín | 43 | 38 | 21 | 59 | 9 | – | 59 | 10 | 4 | 116 |
| Kysucké Nové Mesto | 34 | 54 | 21 | 75 | 10 | 2 | 77 | 13 | 4 | 128 |
| Liptovský Mikuláš | 81 | 156 | 75 | 231 | 30 | 3 | 234 | 2 | 4 | 321 |
| Martin | 57 | 130 | 119 | 249 | 58 | 1 | 250 | 4 | 8 | 319 |
| Námestovo | 56 | 31 | 19 | 50 | 5 | 1 | 51 | 26 | 2 | 135 |
| Ružomberok | 66 | 83 | 34 | 117 | 15 | 2 | 119 | 3 | 6 | 194 |
| Turčianske Teplice | 9 | 19 | 22 | 41 | 6 | – | 41 | – | 1 | 51 |
| Tvrdošín | 25 | 13 | 12 | 25 | 5 | – | 25 | 20 | 3 | 73 |
| Žilina | 125 | 207 | 92 | 299 | 32 | 6 | 305 | 103 | 16 | 549 |
| Banskobystrický kraj | 618 | 1 203 | 518 | 1 721 | 340 | 25 | 1 746 | 161 | 59 | 2 584 |
| Banská Bystrica | 102 | 184 | 66 | 250 | 54 | 5 | 255 | 36 | 13 | 406 |
| Banská Štiavnica | 26 | 32 | 30 | 62 | 11 | 2 | 64 | 1 | 4 | 95 |
| Brezno | 81 | 119 | 52 | 171 | 46 | – | 171 | 5 | 4 | 261 |
| Detva | 16 | 47 | 18 | 65 | 6 | 2 | 67 | 13 | 4 | 100 |
| Krupina | 23 | 19 | 15 | 34 | 8 | – | 34 | 8 | 1 | 66 |
| Lučenec | 74 | 179 | 85 | 264 | 46 | 6 | 270 | 5 | 6 | 355 |
| Poltár | 14 | 40 | 22 | 62 | 12 | 1 | 63 | 4 | – | 81 |
| Revúca | 39 | 83 | 37 | 120 | 27 | 1 | 121 | 22 | 4 | 186 |
| Rimavská Sobota | 70 | 211 | 76 | 287 | 59 | 4 | 291 | 35 | 8 | 404 |
| Veľký Krtíš | 44 | 71 | 22 | 93 | 12 | 1 | 94 | 4 | 3 | 145 |
| Zvolen | 45 | 103 | 47 | 150 | 18 | 1 | 151 | 17 | 3 | 216 |
| Žarnovica | 18 | 34 | 20 | 54 | 13 | – | 54 | – | – | 72 |
| Žiar nad Hronom | 66 | 81 | 28 | 109 | 28 | 2 | 111 | 11 | 9 | 197 |

POTRATY PODĽA DRUHU A ÚZEMIA TRVALÉHO BYDLISKA ŽENY

ABORTIONS ACCORDING TO THE TYPE AND TERRITORY OF PERMANENT ADDRESS OF FEMALE

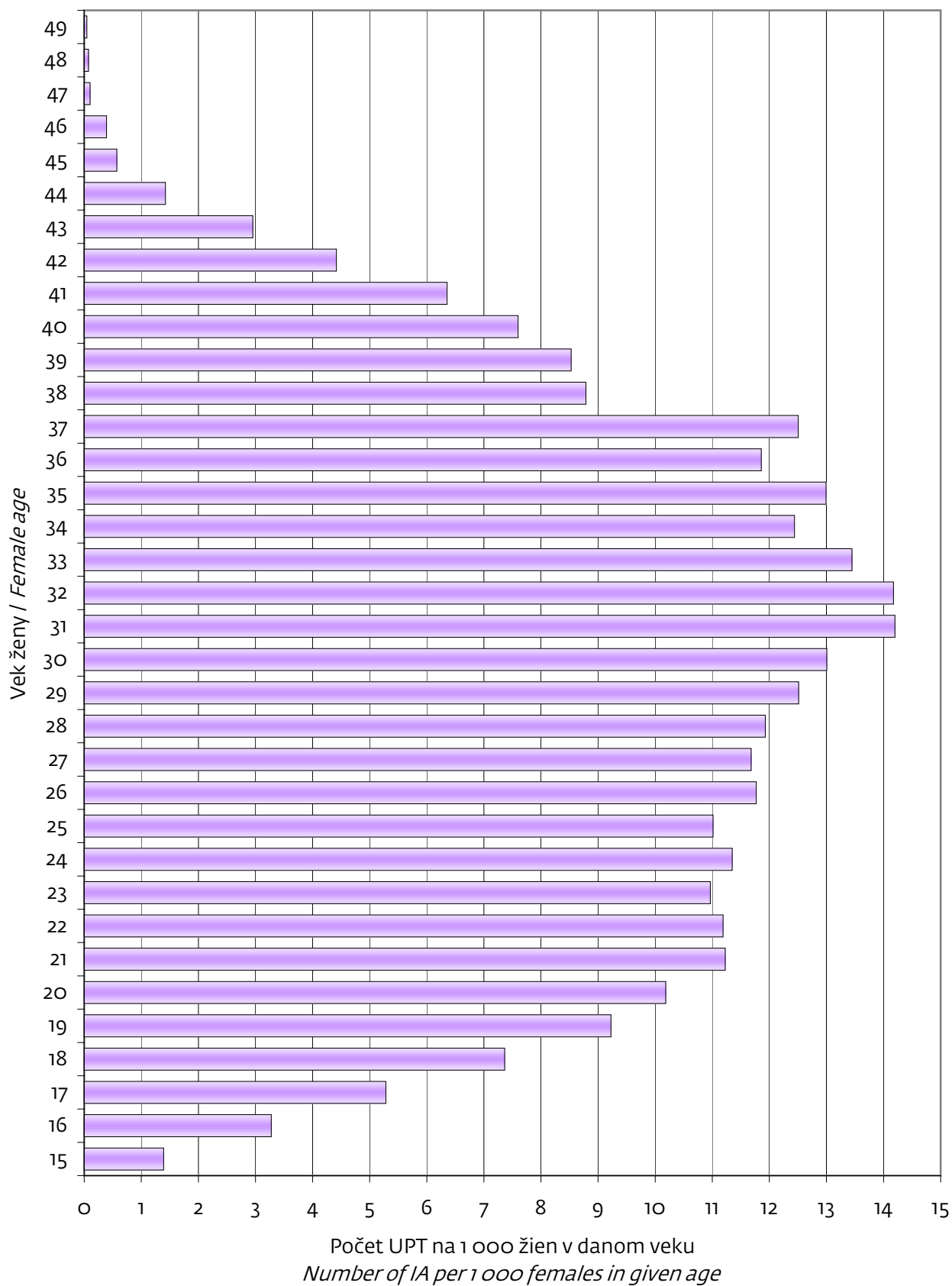
Tabuľka 3
3/3

| Územie trvalého bydliska Territory of permanent address | Spontánne potraty Spontaneous abortions | Umelé prerušenie tehotenstva Induced abortion | | | | | | Iné potraty Other abortions | Mimomaternicové tehotenstvá Extrauterine pregnancies | Potraty spolu Abortions total |
|--|--|--|--|--|---|--|-----------------------|--------------------------------|---|----------------------------------|
| | | legálne do 8. týždňa legal till eighth week | legálne od 9. do 12. týždňa legal since ninth till twelfth week | spolu do 12. týždňa total till twelfth week | z toho zo zdravotných dôvodov of which due to health reasons | legálne od 13. do 24. týždňa legal since thirteenth till twenty fourth week | UPT spolu IA total | | | |
| Prešovský kraj | 855 | 835 | 375 | 1 210 | 185 | 18 | 1 228 | 365 | 47 | 2 495 |
| Bardejov | 93 | 63 | 17 | 80 | 10 | 2 | 82 | 13 | 3 | 191 |
| Humenné | 46 | 70 | 53 | 123 | 38 | 1 | 124 | 31 | 5 | 206 |
| Kežmarok | 101 | 62 | 29 | 91 | 10 | 3 | 94 | 24 | 2 | 221 |
| Levoča | 56 | 46 | 34 | 80 | 11 | – | 80 | 5 | 1 | 142 |
| Medzilaborce | 8 | 12 | 13 | 25 | 1 | – | 25 | 5 | – | 38 |
| Poprad | 159 | 205 | 70 | 275 | 44 | 3 | 278 | 14 | 5 | 456 |
| Prešov | 133 | 105 | 35 | 140 | 15 | 3 | 143 | 107 | 13 | 396 |
| Sabinov | 56 | 27 | 17 | 44 | 4 | 1 | 45 | 37 | 7 | 145 |
| Snina | 33 | 42 | 25 | 67 | 8 | 2 | 69 | 6 | 1 | 109 |
| Stará Ľubovňa | 97 | 21 | 12 | 33 | 5 | – | 33 | 7 | 2 | 139 |
| Stropkov | 11 | 28 | 12 | 40 | 8 | 1 | 41 | 17 | 1 | 70 |
| Svidník | 15 | 50 | 14 | 64 | 11 | – | 64 | 22 | 3 | 104 |
| Vranov nad Topľou | 47 | 104 | 44 | 148 | 20 | 2 | 150 | 77 | 4 | 278 |
| Košický kraj | 817 | 1 649 | 565 | 2 214 | 323 | 27 | 2 241 | 326 | 54 | 3 438 |
| Gelnica | 30 | 67 | 24 | 91 | 12 | 2 | 93 | 17 | 1 | 141 |
| Košice I | 87 | 209 | 46 | 255 | 29 | 1 | 256 | 28 | 3 | 374 |
| Košice II | 71 | 211 | 41 | 252 | 37 | 4 | 256 | 25 | 3 | 355 |
| Košice III | 44 | 79 | 14 | 93 | 10 | 2 | 95 | 10 | – | 149 |
| Košice IV | 53 | 130 | 21 | 151 | 18 | 1 | 152 | 15 | 3 | 223 |
| Košice-okolie | 136 | 267 | 75 | 342 | 49 | 2 | 344 | 42 | 9 | 531 |
| Michalovce | 73 | 169 | 78 | 247 | 40 | 2 | 249 | 70 | 4 | 396 |
| Rožňava | 65 | 156 | 90 | 246 | 56 | 1 | 247 | 31 | 10 | 353 |
| Sobrance | 11 | 34 | 8 | 42 | 6 | – | 42 | 11 | – | 64 |
| Spišská Nová Ves | 129 | 128 | 73 | 201 | 27 | 9 | 210 | 26 | 10 | 375 |
| Trebišov | 118 | 199 | 95 | 294 | 39 | 3 | 297 | 51 | 11 | 477 |

POČET UPT PODĽA VEKU ŽENY V SLOVENSKEJ REPUBLIKE

NUMBER OF IA ACCORDING TO AGE OF FEMALE IN THE SLOVAK REPUBLIC

Graf 8



POTRATY PODĽA DRUHU A VEKU ŽENY V SLOVENSKEJ REPUBLIKE

ABORTIONS ACCORDING TO THE TYPE AND AGE OF FEMALE IN THE SLOVAK REPUBLIC

Tabuľka 4

| Vek ženy | Spontánne potraty | Umelé prerušenie tehotenstva | | | | | | Iné potraty | Mimo-maternicové tehotenstvá | Potraty spolu |
|--------------|-------------------|------------------------------|-----------------------------|---------------------|-------------------------------|------------------------------|---------------|--------------|------------------------------|---------------|
| | | legálne do 8. týždňa | legálne od 9. do 12. týždňa | spolu do 12. týždňa | z toho zo zdravotných dôvodov | legálne od 13. do 24. týždňa | UPT spolu | | | |
| Spolu | 4 811 | 8 356 | 3 453 | 11 809 | 1 841 | 162 | 11 971 | 1 894 | 378 | 19 054 |
| - 14 | 6 | 9 | 2 | 11 | 11 | 1 | 12 | - | - | 18 |
| 15 | 22 | 29 | 22 | 51 | - | 2 | 53 | 3 | 1 | 79 |
| 16 | 49 | 82 | 42 | 124 | 6 | 2 | 126 | 16 | - | 191 |
| 17 | 57 | 134 | 72 | 206 | 10 | 2 | 208 | 27 | 2 | 294 |
| 18 | 103 | 179 | 116 | 295 | 11 | 2 | 297 | 37 | - | 437 |
| 19 | 118 | 254 | 124 | 378 | 15 | 3 | 381 | 27 | 3 | 529 |
| 15 - 19 | 349 | 678 | 376 | 1 054 | 42 | 11 | 1 065 | 110 | 6 | 1 530 |
| 20 | 132 | 257 | 171 | 428 | 32 | 7 | 435 | 54 | 10 | 631 |
| 21 | 136 | 321 | 163 | 484 | 29 | 4 | 488 | 62 | 8 | 694 |
| 22 | 145 | 317 | 169 | 486 | 55 | 2 | 488 | 75 | 10 | 718 |
| 23 | 195 | 315 | 164 | 479 | 42 | 2 | 481 | 84 | 13 | 773 |
| 24 | 215 | 328 | 163 | 491 | 37 | 11 | 502 | 88 | 14 | 819 |
| 20 - 24 | 823 | 1 538 | 830 | 2 368 | 195 | 26 | 2 394 | 363 | 55 | 3 635 |
| 25 | 240 | 312 | 167 | 479 | 36 | 13 | 492 | 134 | 22 | 888 |
| 26 | 273 | 385 | 153 | 538 | 47 | 5 | 543 | 105 | 26 | 947 |
| 27 | 272 | 381 | 160 | 541 | 51 | 8 | 549 | 117 | 21 | 959 |
| 28 | 310 | 402 | 141 | 543 | 50 | 10 | 553 | 140 | 21 | 1 024 |
| 29 | 313 | 407 | 159 | 566 | 54 | 10 | 576 | 110 | 25 | 1 024 |
| 25 - 29 | 1 408 | 1 887 | 780 | 2 667 | 238 | 46 | 2 713 | 606 | 115 | 4 842 |
| 30 | 294 | 422 | 165 | 587 | 65 | 7 | 594 | 121 | 33 | 1 042 |
| 31 | 297 | 457 | 172 | 629 | 38 | 11 | 640 | 107 | 26 | 1 070 |
| 32 | 222 | 455 | 163 | 618 | 63 | 4 | 622 | 103 | 32 | 979 |
| 33 | 228 | 408 | 145 | 553 | 55 | 8 | 561 | 69 | 24 | 882 |
| 34 | 208 | 356 | 125 | 481 | 45 | 7 | 488 | 66 | 9 | 771 |
| 30 - 34 | 1 249 | 2 098 | 770 | 2 868 | 266 | 37 | 2 905 | 466 | 124 | 4 744 |
| 35 | 183 | 344 | 131 | 475 | 44 | 10 | 485 | 63 | 18 | 749 |
| 36 | 136 | 330 | 96 | 426 | 33 | 6 | 432 | 54 | 16 | 638 |
| 37 | 128 | 301 | 135 | 436 | 47 | 6 | 442 | 49 | 15 | 634 |
| 38 | 122 | 233 | 71 | 304 | 32 | 1 | 305 | 49 | 11 | 487 |
| 39 | 106 | 234 | 66 | 300 | 33 | 6 | 306 | 42 | 5 | 459 |
| 35 - 39 | 675 | 1 442 | 499 | 1 941 | 189 | 29 | 1 970 | 257 | 65 | 2 967 |
| 40 | 78 | 220 | 62 | 282 | 282 | 2 | 284 | 30 | 6 | 398 |
| 41 | 61 | 191 | 49 | 240 | 240 | 4 | 244 | 22 | 3 | 330 |
| 42 | 67 | 126 | 42 | 168 | 168 | 3 | 171 | 16 | 1 | 255 |
| 43 | 32 | 89 | 22 | 111 | 111 | 1 | 112 | 9 | 3 | 156 |
| 44 | 26 | 43 | 10 | 53 | 53 | 1 | 54 | 9 | - | 89 |
| 40 - 44 | 264 | 669 | 185 | 854 | 854 | 11 | 865 | 86 | 13 | 1 228 |
| 45 | 18 | 16 | 5 | 21 | 21 | 1 | 22 | 1 | - | 41 |
| 46 | 10 | 13 | 2 | 15 | 15 | - | 15 | 2 | - | 27 |
| 47 | 3 | 2 | 2 | 4 | 4 | - | 4 | 1 | - | 8 |
| 48 | 2 | 2 | 1 | 3 | 3 | - | 3 | 2 | - | 7 |
| 49 | 1 | 2 | - | 2 | 2 | - | 2 | - | - | 3 |
| 45 - 49 | 34 | 35 | 10 | 45 | 45 | 1 | 46 | 6 | - | 86 |
| 50 + | 3 | - | 1 | 1 | 1 | - | 1 | - | - | 4 |

POTRATY PODĽA DRUHU A VEKU ŽENY V NITRIANSKOM KRAJI

ABORTIONS ACCORDING TO THE TYPE AND AGE OF FEMALE IN NITRA REGION

Tabuľka 4.4

| Vek ženy | Spontánne potraty | Umelé prerušenie tehotenstva | | | | | | Iné potraty | Mimomatericové tehotenstvá | Potraty spolu |
|--------------|-------------------|------------------------------|-----------------------------|---------------------|-------------------------------|------------------------------|--------------|-------------|----------------------------|---------------|
| | | legálne do 8. týždňa | legálne od 9. do 12. týždňa | spolu do 12. týždňa | z toho zo zdravotných dôvodov | legálne od 13. do 24. týždňa | UPT spolu | | | |
| Spolu | 536 | 1 153 | 474 | 1 627 | 316 | 19 | 1 646 | 182 | 49 | 2 413 |
| - 14 | 2 | 2 | - | 2 | 2 | - | 2 | - | - | 4 |
| 15 | 3 | 5 | 4 | 9 | - | - | 9 | 1 | - | 13 |
| 16 | 11 | 7 | 9 | 16 | 2 | 1 | 17 | 1 | - | 29 |
| 17 | 3 | 17 | 5 | 22 | 2 | - | 22 | 2 | - | 27 |
| 18 | 11 | 24 | 10 | 34 | 2 | 1 | 35 | 3 | - | 49 |
| 19 | 11 | 36 | 14 | 50 | 5 | - | 50 | 2 | - | 63 |
| 15 - 19 | 39 | 89 | 42 | 131 | 11 | 2 | 133 | 9 | - | 181 |
| 20 | 16 | 39 | 25 | 64 | 9 | - | 64 | 8 | 1 | 89 |
| 21 | 12 | 45 | 15 | 60 | 3 | 1 | 61 | 10 | - | 83 |
| 22 | 20 | 48 | 34 | 82 | 20 | - | 82 | 9 | 1 | 112 |
| 23 | 24 | 47 | 22 | 69 | 9 | 1 | 70 | 9 | 1 | 104 |
| 24 | 22 | 42 | 26 | 68 | 17 | 3 | 71 | 5 | 2 | 100 |
| 20 - 24 | 94 | 221 | 122 | 343 | 58 | 5 | 348 | 41 | 5 | 488 |
| 25 | 24 | 48 | 29 | 77 | 7 | 2 | 79 | 15 | 1 | 119 |
| 26 | 39 | 51 | 22 | 73 | 9 | - | 73 | 7 | 4 | 123 |
| 27 | 29 | 52 | 24 | 76 | 12 | - | 76 | 12 | 5 | 122 |
| 28 | 37 | 56 | 20 | 76 | 12 | 3 | 79 | 12 | 2 | 130 |
| 29 | 40 | 51 | 25 | 76 | 12 | 2 | 78 | 13 | 3 | 134 |
| 25 - 29 | 169 | 258 | 120 | 378 | 52 | 7 | 385 | 59 | 15 | 628 |
| 30 | 33 | 59 | 23 | 82 | 13 | - | 82 | 9 | 3 | 127 |
| 31 | 28 | 67 | 27 | 94 | 6 | - | 94 | 12 | 8 | 142 |
| 32 | 19 | 67 | 23 | 90 | 10 | - | 90 | 10 | 6 | 125 |
| 33 | 21 | 70 | 20 | 90 | 10 | - | 90 | 7 | 2 | 120 |
| 34 | 22 | 54 | 12 | 66 | 10 | - | 66 | 9 | - | 97 |
| 30 - 34 | 123 | 317 | 105 | 422 | 49 | - | 422 | 47 | 19 | 611 |
| 35 | 18 | 37 | 18 | 55 | 5 | - | 55 | 4 | 4 | 81 |
| 36 | 18 | 37 | 11 | 48 | 4 | - | 48 | 2 | 2 | 70 |
| 37 | 4 | 36 | 15 | 51 | 10 | - | 51 | 4 | 1 | 60 |
| 38 | 15 | 39 | 6 | 45 | 5 | - | 45 | 2 | - | 62 |
| 39 | 11 | 28 | 11 | 39 | 7 | 2 | 41 | 5 | 1 | 58 |
| 35 - 39 | 66 | 177 | 61 | 238 | 31 | 2 | 240 | 17 | 8 | 331 |
| 40 | 10 | 39 | 6 | 45 | 45 | - | 45 | 1 | - | 56 |
| 41 | 7 | 29 | 7 | 36 | 36 | 1 | 37 | 4 | - | 48 |
| 42 | 7 | 9 | 4 | 13 | 13 | 1 | 14 | 1 | - | 22 |
| 43 | 8 | 5 | 4 | 9 | 9 | - | 9 | 2 | 2 | 21 |
| 44 | 5 | 5 | 1 | 6 | 6 | - | 6 | - | - | 11 |
| 40 - 44 | 37 | 87 | 22 | 109 | 109 | 2 | 111 | 8 | 2 | 158 |
| 45 | 3 | 1 | - | 1 | 1 | 1 | 2 | - | - | 5 |
| 46 | - | 1 | - | 1 | 1 | - | 1 | - | - | 1 |
| 47 | 2 | - | 1 | 1 | 1 | - | 1 | 1 | - | 4 |
| 48 | - | - | - | - | - | - | - | - | - | - |
| 49 | - | - | - | - | - | - | - | - | - | - |
| 45 - 49 | 5 | 2 | 1 | 3 | 3 | 1 | 4 | 1 | - | 10 |
| 50 + | 1 | - | 1 | 1 | 1 | - | 1 | - | - | 2 |

POTRATY PODĽA DRUHU A VEKU ŽENY V KOŠICKOM KRAJI

ABORTIONS ACCORDING TO THE TYPE AND AGE OF FEMALE IN KOŠICE REGION

Tabuľka 4.8
1/2

| Vek ženy | Spon-tánne potraty | Umelé prerušenie tehotenstva | | | | | | Iné potraty | Mimo-mater-nicové teho-tenstvá | Potraty spolu |
|--------------|--------------------|------------------------------|-----------------------------|---------------------|--------------------------------|------------------------------|--------------|-------------|--------------------------------|---------------|
| | | legálne do 8. týždňa | legálne od 9. do 12. týždňa | spolu do 12. týždňa | z toho zo zdra-votných dôvodov | legálne od 13. do 24. týždňa | UPT spolu | | | |
| Spolu | 817 | 1 649 | 565 | 2 214 | 323 | 27 | 2 241 | 326 | 54 | 3 438 |
| - 14 | 3 | 5 | - | 5 | 5 | - | 5 | - | - | 8 |
| 15 | 6 | 4 | 1 | 5 | - | 1 | 6 | 1 | 1 | 14 |
| 16 | 11 | 9 | 7 | 16 | 1 | - | 16 | 5 | - | 32 |
| 17 | 20 | 28 | 13 | 41 | - | 2 | 43 | 6 | - | 69 |
| 18 | 31 | 36 | 23 | 59 | 2 | - | 59 | 7 | - | 97 |
| 19 | 22 | 68 | 23 | 91 | 3 | - | 91 | 7 | 2 | 122 |
| 15 - 19 | 90 | 145 | 67 | 212 | 6 | 3 | 215 | 26 | 3 | 334 |
| 20 | 27 | 54 | 33 | 87 | 5 | 2 | 89 | 13 | 3 | 132 |
| 21 | 22 | 71 | 29 | 100 | 9 | 2 | 102 | 5 | 1 | 130 |
| 22 | 19 | 71 | 17 | 88 | 5 | 1 | 89 | 9 | 2 | 119 |
| 23 | 31 | 61 | 29 | 90 | 8 | 1 | 91 | 19 | 2 | 143 |
| 24 | 31 | 63 | 27 | 90 | 5 | 1 | 91 | 16 | 3 | 141 |
| 20 - 24 | 130 | 320 | 135 | 455 | 32 | 7 | 462 | 62 | 11 | 665 |
| 25 | 39 | 62 | 39 | 101 | 7 | 3 | 104 | 26 | 8 | 177 |
| 26 | 46 | 85 | 25 | 110 | 9 | 2 | 112 | 19 | 4 | 181 |
| 27 | 47 | 97 | 24 | 121 | 8 | 1 | 122 | 16 | 1 | 186 |
| 28 | 49 | 68 | 23 | 91 | 7 | 1 | 92 | 20 | 3 | 164 |
| 29 | 45 | 89 | 25 | 114 | 8 | 1 | 115 | 14 | 5 | 179 |
| 25 - 29 | 226 | 401 | 136 | 537 | 39 | 8 | 545 | 95 | 21 | 887 |
| 30 | 51 | 85 | 23 | 108 | 11 | - | 108 | 23 | 5 | 187 |
| 31 | 54 | 103 | 29 | 132 | 11 | 1 | 133 | 16 | 2 | 205 |
| 32 | 37 | 98 | 24 | 122 | 15 | 1 | 123 | 18 | 2 | 180 |
| 33 | 46 | 65 | 34 | 99 | 13 | 1 | 100 | 10 | 2 | 158 |
| 34 | 28 | 69 | 24 | 93 | 13 | 1 | 94 | 10 | 1 | 133 |
| 30 - 34 | 216 | 420 | 134 | 554 | 63 | 4 | 558 | 77 | 12 | 863 |
| 35 | 36 | 66 | 20 | 86 | 5 | - | 86 | 14 | 2 | 138 |
| 36 | 21 | 47 | 12 | 59 | 6 | 2 | 61 | 7 | - | 89 |
| 37 | 25 | 46 | 24 | 70 | 8 | 1 | 71 | 14 | 1 | 111 |
| 38 | 20 | 28 | 8 | 36 | 1 | - | 36 | 13 | 1 | 70 |
| 39 | 19 | 43 | 5 | 48 | 6 | 1 | 49 | 6 | 3 | 77 |
| 35 - 39 | 121 | 230 | 69 | 299 | 26 | 4 | 303 | 54 | 7 | 485 |

POTRATY PODĽA DRUHU A VEKU ŽENY V KOŠICKOM KRAJI

ABORTIONS ACCORDING TO THE TYPE AND AGE OF FEMALE IN KOŠICE REGION

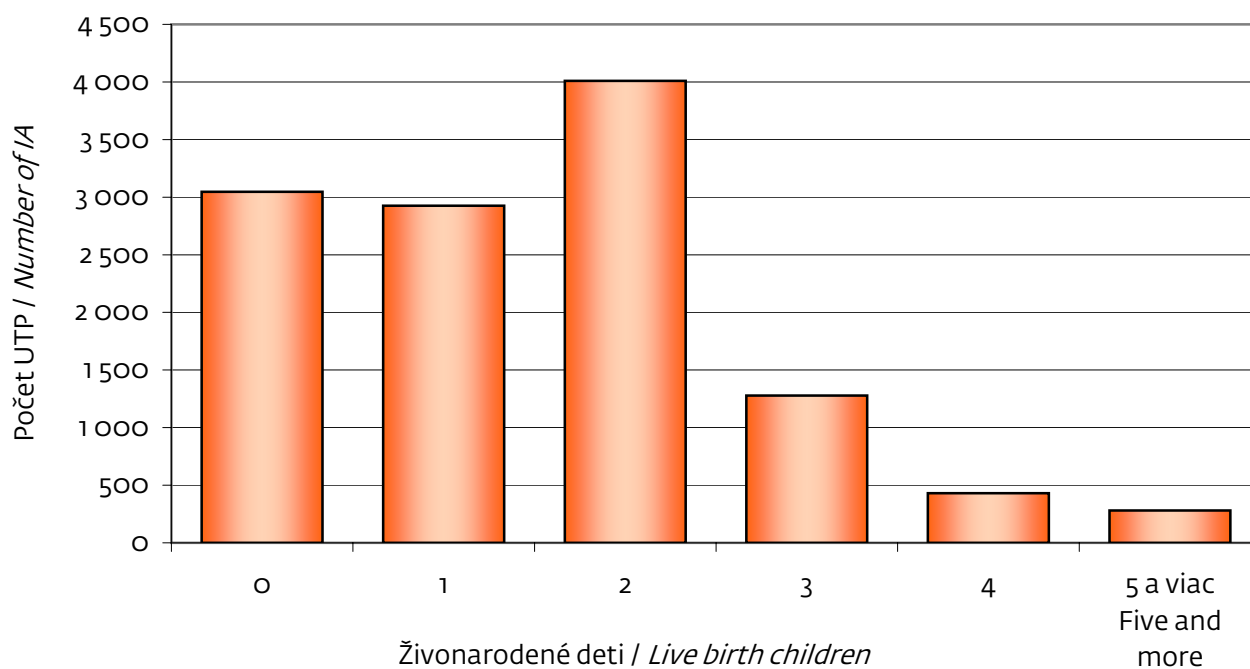
Tabuľka 4.8
2/2

| Female age | Spontaneous abortions | Induced abortion | | | | | | Other abortions | Extrauterine pregnancies | Abortions total |
|------------|-----------------------|------------------------|-------------------------------------|-------------------------|--------------------------------|--|----------|-----------------|--------------------------|-----------------|
| | | legal till eighth week | legal since ninth till twelfth week | till twelfth week total | of which due to health reasons | legal since thirteenth till twenty fourth week | IA total | | | |
| 40 | 11 | 41 | 8 | 49 | 49 | – | 49 | 3 | – | 63 |
| 41 | 5 | 32 | 5 | 37 | 37 | 1 | 38 | 4 | – | 47 |
| 42 | 6 | 24 | 7 | 31 | 31 | – | 31 | 1 | – | 38 |
| 43 | 2 | 18 | 2 | 20 | 20 | – | 20 | 2 | – | 24 |
| 44 | 2 | 8 | 1 | 9 | 9 | – | 9 | 1 | – | 12 |
| 40 – 44 | 26 | 123 | 23 | 146 | 146 | 1 | 147 | 11 | – | 184 |
| 45 | 1 | 3 | 1 | 4 | 4 | – | 4 | – | – | 5 |
| 46 | 2 | 1 | – | 1 | 1 | – | 1 | – | – | 3 |
| 47 | 1 | – | – | – | – | – | – | – | – | 1 |
| 48 | – | – | – | – | – | – | – | 1 | – | 1 |
| 49 | 1 | 1 | – | 1 | 1 | – | 1 | – | – | 2 |
| 45 – 49 | 5 | 5 | 1 | 6 | 6 | – | 6 | 1 | – | 12 |
| 50 + | – | – | – | – | – | – | – | – | – | – |

UPT PODĽA POČTU ŽIVONARODENÝCH DETÍ PRED POTRATOM

IA ACCORDING TO NUMBER OF LIVE BIRTH CHILDREN BEFORE ABORTION

Graf 9



**POTRATY PODĽA DRUHU, TRVALÉHO BYDLISKA ŽENY
A POČTU ŽIVONARODENÝCH DETÍ PRED POTRATOM**

 ABORTIONS ACCORDING TO THE TYPE, PERMANENT ADDRESS OF FEMALE
AND NUMBER OF LIVE BIRTH CHILDREN BEFORE ABORTION

 Tabuľka 5
1/3

| Počet živonarodených detí | Územie trvalého bydliska | Spontánne potraty | Umelé prerušenie tehotenstva | | | | | | Iné potraty | Mimo-maternicové tehotenstvá | Potraty spolu |
|---------------------------|----------------------------|-------------------|------------------------------|-----------------------------|---------------------|-------------------------------|------------------------------|---------------|--------------|------------------------------|---------------|
| | | | legálne do 8. týždňa | legálne od 9. do 12. týždňa | spolu do 12. týždňa | z toho zo zdravotných dôvodov | legálne od 13. do 24. týždňa | UPT spolu | | | |
| Spolu Total | Slovenská republika | 4 811 | 8 356 | 3 453 | 11 809 | 1 841 | 162 | 11 971 | 1 894 | 378 | 19 054 |
| | Bratislavský kraj | 622 | 1 054 | 387 | 1 441 | 170 | 21 | 1 462 | 117 | 33 | 2 234 |
| | Trnavský kraj | 390 | 855 | 348 | 1 203 | 170 | 13 | 1 216 | 223 | 32 | 1 861 |
| | Trenčiansky kraj | 383 | 769 | 338 | 1 107 | 141 | 20 | 1 127 | 315 | 41 | 1 866 |
| | Nitriansky kraj | 536 | 1 153 | 474 | 1 627 | 316 | 19 | 1 646 | 182 | 49 | 2 413 |
| | Žilinský kraj | 590 | 838 | 448 | 1 286 | 196 | 19 | 1 305 | 205 | 63 | 2 163 |
| | Bansko-bystrický kraj | 618 | 1 203 | 518 | 1 721 | 340 | 25 | 1 746 | 161 | 59 | 2 584 |
| | Prešovský kraj | 855 | 835 | 375 | 1 210 | 185 | 18 | 1 228 | 365 | 47 | 2 495 |
| | Košický kraj | 817 | 1 649 | 565 | 2 214 | 323 | 27 | 2 241 | 326 | 54 | 3 438 |
| Žiadne Not any | Slovenská republika | 1 812 | 2 036 | 945 | 2 981 | 171 | 66 | 3 047 | 799 | 154 | 5 812 |
| | Bratislavský kraj | 276 | 301 | 130 | 431 | 12 | 13 | 444 | 58 | 16 | 794 |
| | Trnavský kraj | 169 | 192 | 91 | 283 | 13 | 3 | 286 | 115 | 16 | 586 |
| | Trenčiansky kraj | 153 | 188 | 103 | 291 | 15 | 5 | 296 | 148 | 15 | 612 |
| | Nitriansky kraj | 200 | 284 | 128 | 412 | 36 | 9 | 421 | 82 | 24 | 727 |
| | Žilinský kraj | 219 | 211 | 135 | 346 | 21 | 10 | 356 | 82 | 21 | 678 |
| | Bansko-bystrický kraj | 236 | 279 | 125 | 404 | 32 | 13 | 417 | 60 | 22 | 735 |
| | Prešovský kraj | 274 | 207 | 92 | 299 | 10 | 5 | 304 | 116 | 19 | 713 |
| | Košický kraj | 285 | 374 | 141 | 515 | 32 | 8 | 523 | 138 | 21 | 967 |
| Jedno One | Slovenská republika | 1 506 | 2 095 | 782 | 2 877 | 358 | 49 | 2 926 | 601 | 146 | 5 179 |
| | Bratislavský kraj | 212 | 340 | 102 | 442 | 45 | 7 | 449 | 37 | 13 | 711 |
| | Trnavský kraj | 125 | 247 | 79 | 326 | 40 | 6 | 332 | 72 | 12 | 541 |
| | Trenčiansky kraj | 136 | 173 | 96 | 269 | 26 | 10 | 279 | 111 | 16 | 542 |
| | Nitriansky kraj | 193 | 311 | 117 | 428 | 69 | 5 | 433 | 63 | 21 | 710 |
| | Žilinský kraj | 205 | 173 | 96 | 269 | 28 | 2 | 271 | 58 | 28 | 562 |
| | Bansko-bystrický kraj | 180 | 294 | 110 | 404 | 66 | 9 | 413 | 52 | 22 | 667 |
| | Prešovský kraj | 218 | 148 | 64 | 212 | 24 | 3 | 215 | 118 | 14 | 565 |
| | Košický kraj | 237 | 409 | 118 | 527 | 60 | 7 | 534 | 90 | 20 | 881 |

**POTRATY PODĽA DRUHU, TRVALÉHO BYDLISKA ŽENY
A POČTU ŽIVONARODENÝCH DEŤÍ PRED POTRATOM**

ABORTIONS ACCORDING TO THE TYPE, PERMANENT ADDRESS OF FEMALE
AND NUMBER OF LIVE BIRTH CHILDREN BEFORE ABORTION

Tabuľka 5
2/3

| Number of live birth children | Territory of permanent address | Spontaneous abortions | Induced abortion | | | | | | Other abortions | Extrauterine pregnancies | Abortions total |
|-------------------------------|--------------------------------|-----------------------|------------------------|-------------------------------------|-------------------------|--------------------------------|--|--------------|-----------------|--------------------------|-----------------|
| | | | legal till eighth week | legal since ninth till twelfth week | till twelfth week total | of which due to health reasons | legal since thirteenth till twenty fourth week | IA total | | | |
| Dve Two | Slovenská republika | 841 | 3 024 | 957 | 3 981 | 788 | 28 | 4 009 | 285 | 57 | 5 192 |
| | Bratislavský kraj | 103 | 340 | 106 | 446 | 81 | 1 | 447 | 20 | 3 | 573 |
| | Trnavský kraj | 48 | 332 | 103 | 435 | 76 | 1 | 436 | 23 | 4 | 511 |
| | Trenčiansky kraj | 64 | 300 | 84 | 384 | 69 | 3 | 387 | 43 | 9 | 503 |
| | Nitriansky kraj | 89 | 431 | 129 | 560 | 138 | 4 | 564 | 26 | 3 | 682 |
| | Žilinský kraj | 108 | 332 | 129 | 461 | 87 | 5 | 466 | 35 | 10 | 619 |
| | Bansko-bystrický kraj | 113 | 458 | 161 | 619 | 152 | 2 | 621 | 26 | 13 | 773 |
| | Prešovský kraj | 171 | 261 | 86 | 347 | 63 | 5 | 352 | 62 | 8 | 593 |
| | Košický kraj | 145 | 570 | 159 | 729 | 122 | 7 | 736 | 50 | 7 | 938 |
| Tri Three | Slovenská republika | 299 | 819 | 452 | 1 271 | 305 | 7 | 1 278 | 103 | 17 | 1 697 |
| | Bratislavský kraj | 24 | 64 | 38 | 102 | 28 | – | 102 | 1 | 1 | 128 |
| | Trnavský kraj | 28 | 68 | 47 | 115 | 27 | 1 | 116 | 10 | – | 154 |
| | Trenčiansky kraj | 15 | 84 | 40 | 124 | 23 | – | 124 | 6 | 1 | 146 |
| | Nitriansky kraj | 25 | 91 | 55 | 146 | 33 | 1 | 147 | 8 | 1 | 181 |
| | Žilinský kraj | 35 | 96 | 56 | 152 | 44 | 2 | 154 | 18 | 2 | 209 |
| | Bansko-bystrický kraj | 48 | 113 | 72 | 185 | 51 | – | 185 | 14 | 2 | 249 |
| | Prešovský kraj | 72 | 128 | 65 | 193 | 47 | 1 | 194 | 27 | 4 | 297 |
| | Košický kraj | 52 | 175 | 79 | 254 | 52 | 2 | 256 | 19 | 6 | 333 |

**POTRATY PODĽA DRUHU, TRVALÉHO BYDLISKA ŽENY
A POČTU ŽIVONARODENÝCH DETÍ PRED POTRATOM**

ABORTIONS ACCORDING TO THE TYPE, PERMANENT ADDRESS OF FEMALE
AND NUMBER OF LIVE BIRTH CHILDREN BEFORE ABORTION

Tabuľka 5
3/3

| Počet živo- naro- dených detí <i>Number of live birth children</i> | Územie trvalého bydliska <i>Territory of permanent address</i> | Spon- tánne potraty | Umelé prerušenie tehotenstva | | | | | | Iné potraty | Mimo- mater- nicové teho- tenstvá | Potraty spolu |
|--|---|---------------------------|------------------------------|--------------------------------------|---------------------------|--|---------------------------------------|--------------|----------------|---|------------------|
| | | | legálne do 8. týždňa | legálne od 9. do 12. týždňa | spolu do 12. týždňa | z toho zo zdra- votných dôvodov | legálne od 13. do 24. týždňa | UPT spolu | | | |
| Štyri <i>Four</i> | Slovenská republika | 158 | 250 | 174 | 424 | 123 | 6 | 430 | 49 | 2 | 639 |
| | Bratislavský kraj | 3 | 7 | 7 | 14 | 3 | – | 14 | – | – | 17 |
| | Trnavský kraj | 14 | 13 | 15 | 28 | 9 | 1 | 29 | 3 | – | 46 |
| | Trenčiansky kraj | 8 | 17 | 9 | 26 | 7 | 2 | 28 | 4 | – | 40 |
| | Nitriansky kraj | 14 | 25 | 24 | 49 | 20 | – | 49 | 2 | – | 65 |
| | Žilinský kraj | 14 | 17 | 24 | 41 | 10 | – | 41 | 9 | 2 | 66 |
| | Bansko- bystrický kraj | 21 | 41 | 29 | 70 | 25 | – | 70 | 2 | – | 93 |
| | Prešovský kraj | 54 | 65 | 36 | 101 | 27 | 2 | 103 | 18 | – | 175 |
| | Košický kraj | 30 | 65 | 30 | 95 | 22 | 1 | 96 | 11 | – | 137 |
| Päť a viac <i>Five and more</i> | Slovenská republika | 195 | 132 | 143 | 275 | 96 | 6 | 281 | 57 | 2 | 535 |
| | Bratislavský kraj | 4 | 2 | 4 | 6 | 1 | – | 6 | 1 | – | 11 |
| | Trnavský kraj | 6 | 3 | 13 | 16 | 5 | 1 | 17 | – | – | 23 |
| | Trenčiansky kraj | 7 | 7 | 6 | 13 | 1 | – | 13 | 3 | – | 23 |
| | Nitriansky kraj | 15 | 11 | 21 | 32 | 20 | – | 32 | 1 | – | 48 |
| | Žilinský kraj | 9 | 9 | 8 | 17 | 6 | – | 17 | 3 | – | 29 |
| | Bansko- bystrický kraj | 20 | 18 | 21 | 39 | 14 | 1 | 40 | 7 | – | 67 |
| | Prešovský kraj | 66 | 26 | 32 | 58 | 14 | 2 | 60 | 24 | 2 | 152 |
| | Košický kraj | 68 | 56 | 38 | 94 | 35 | 2 | 96 | 18 | – | 182 |

POTRATY PODĽA DRUHU, RODINNÉHO STAVU A ÚZEMIA TRVALÉHO BYDLISKA ŽENY

ABORTIONS ACCORDING TO THE TYPE, MARITAL STATUS AND TERRITORY
OF PERMANENT ADDRESS OF FEMALE

Tabuľka 7
1/2

| Územie trvalého bydliska | Rodinný stav | Spon-tánne potraty | Umelé prerušenie tehotenstva | | | | | | Iné potraty | Mimo-mater-nicové teho-tenstvá | Potraty spolu |
|--------------------------|--------------|--------------------|------------------------------|-----------------------------|---------------------|--------------------------------|------------------------------|---------------|--------------|--------------------------------|---------------|
| | | | legálne do 8. týždňa | legálne od 9. do 12. týždňa | spolu do 12. týždňa | z toho zo zdra-votných dôvodov | legálne od 13. do 24. týždňa | UPT spolu | | | |
| Slovenská republika | spolu | 4 811 | 8 356 | 3 453 | 11 809 | 1 841 | 162 | 11 971 | 1 894 | 378 | 19 054 |
| | slobodná | 1 554 | 3 066 | 1 558 | 4 624 | 406 | 61 | 4 685 | 525 | 95 | 6 859 |
| | vydatá | 2 939 | 4 394 | 1 531 | 5 925 | 1 190 | 85 | 6 010 | 1 245 | 250 | 10 444 |
| | rozvedená | 247 | 795 | 335 | 1 130 | 212 | 15 | 1 145 | 92 | 26 | 1 510 |
| | vdova | 18 | 58 | 17 | 75 | 22 | – | 75 | 6 | 2 | 101 |
| | neudané | 53 | 43 | 12 | 55 | 11 | 1 | 56 | 26 | 5 | 140 |
| Bratislavský kraj | spolu | 622 | 1 054 | 387 | 1 441 | 170 | 21 | 1 462 | 117 | 33 | 2 234 |
| | slobodná | 185 | 440 | 190 | 630 | 25 | 7 | 637 | 38 | 8 | 868 |
| | vydatá | 396 | 481 | 151 | 632 | 114 | 13 | 645 | 74 | 22 | 1 137 |
| | rozvedená | 30 | 116 | 41 | 157 | 28 | – | 157 | 2 | 3 | 192 |
| | vdova | 1 | 4 | 2 | 6 | – | – | 6 | – | – | 7 |
| | neudané | 10 | 13 | 3 | 16 | 3 | 1 | 17 | 3 | – | 30 |
| Trnavský kraj | spolu | 390 | 855 | 348 | 1 203 | 170 | 13 | 1 216 | 223 | 32 | 1 861 |
| | slobodná | 124 | 295 | 157 | 452 | 33 | 5 | 457 | 67 | 11 | 659 |
| | vydatá | 218 | 467 | 158 | 625 | 115 | 8 | 633 | 125 | 17 | 993 |
| | rozvedená | 22 | 84 | 31 | 115 | 18 | – | 115 | 13 | 3 | 153 |
| | vdova | 2 | 4 | 1 | 5 | 2 | – | 5 | – | – | 7 |
| | neudané | 24 | 5 | 1 | 6 | 2 | – | 6 | 18 | 1 | 49 |
| Trenčiansky kraj | spolu | 383 | 769 | 338 | 1 107 | 141 | 20 | 1 127 | 315 | 41 | 1 866 |
| | slobodná | 128 | 271 | 165 | 436 | 24 | 8 | 444 | 90 | 10 | 672 |
| | vydatá | 234 | 402 | 139 | 541 | 90 | 7 | 548 | 216 | 24 | 1 022 |
| | rozvedená | 19 | 86 | 32 | 118 | 23 | 5 | 123 | 9 | 6 | 157 |
| | vdova | 1 | 4 | – | 4 | 1 | – | 4 | – | 1 | 6 |
| | neudané | 1 | 6 | 2 | 8 | 3 | – | 8 | – | – | 9 |
| Nitriansky kraj | spolu | 536 | 1 153 | 474 | 1 627 | 316 | 19 | 1 646 | 182 | 49 | 2 413 |
| | slobodná | 186 | 431 | 232 | 663 | 118 | 8 | 671 | 55 | 13 | 925 |
| | vydatá | 312 | 581 | 189 | 770 | 160 | 10 | 780 | 105 | 32 | 1 229 |
| | rozvedená | 32 | 128 | 50 | 178 | 33 | 1 | 179 | 20 | 3 | 234 |
| | vdova | 1 | 9 | 3 | 12 | 4 | – | 12 | 2 | – | 15 |
| | neudané | 5 | 4 | – | 4 | 1 | – | 4 | – | 1 | 10 |
| Žilinský kraj | spolu | 590 | 838 | 448 | 1 286 | 196 | 19 | 1 305 | 205 | 63 | 2 163 |
| | slobodná | 147 | 286 | 187 | 473 | 29 | 5 | 478 | 52 | 9 | 686 |
| | vydatá | 394 | 452 | 208 | 660 | 138 | 11 | 671 | 138 | 47 | 1 250 |
| | rozvedená | 41 | 87 | 47 | 134 | 23 | 3 | 137 | 14 | 5 | 197 |
| | vdova | 5 | 10 | 2 | 12 | 6 | – | 12 | 1 | – | 18 |
| | neudané | 3 | 3 | 4 | 7 | – | – | 7 | – | 2 | 12 |
| Bansko-bystrický kraj | spolu | 618 | 1 203 | 518 | 1 721 | 340 | 25 | 1 746 | 161 | 59 | 2 584 |
| | slobodná | 243 | 443 | 233 | 676 | 73 | 10 | 686 | 44 | 16 | 989 |
| | vydatá | 329 | 627 | 219 | 846 | 229 | 12 | 858 | 105 | 39 | 1 331 |
| | rozvedená | 41 | 116 | 60 | 176 | 33 | 3 | 179 | 9 | 4 | 233 |
| | vdova | 1 | 10 | 5 | 15 | 4 | – | 15 | – | – | 16 |
| | neudané | 4 | 7 | 1 | 8 | 1 | – | 8 | 3 | – | 15 |

POTRATY PODĽA DRUHU, RODINNÉHO STAVU A ÚZEMIA TRVALÉHO BYDLISKA ŽENY

ABORTIONS ACCORDING TO THE TYPE, MARITAL STATUS AND TERRITORY
OF PERMANENT ADDRESS OF FEMALE

Tabuľka 7
2/2

| Territory of permanent address | Marital status | Spon- taneous aborti- ons | Induced abortion | | | | | | Other aborti- ons | Extraute- rine pregnan- cies | Abortions total |
|--------------------------------------|-------------------|------------------------------------|---------------------------------|--|----------------------------------|---|--|--------------|-------------------------|---------------------------------------|--------------------|
| | | | legal till eighth week | legal since ninth till twelfth week | till twelfth week total | of which due to health reasons | legal since thirte- enth till twenty fourth week | IA total | | | |
| Prešovský kraj | total | 855 | 835 | 375 | 1 210 | 185 | 18 | 1 228 | 365 | 47 | 2 495 |
| | single | 227 | 275 | 146 | 421 | 34 | 7 | 428 | 80 | 11 | 746 |
| | married | 598 | 490 | 205 | 695 | 132 | 10 | 705 | 273 | 35 | 1 611 |
| | divorced | 20 | 64 | 23 | 87 | 18 | 1 | 88 | 8 | – | 116 |
| | widow | 7 | 5 | 1 | 6 | 1 | – | 6 | 2 | 1 | 16 |
| | unannounced | 3 | 1 | – | 1 | – | – | 1 | 2 | – | 6 |
| Košícký kraj | total | 817 | 1 649 | 565 | 2 214 | 323 | 27 | 2 241 | 326 | 54 | 3 438 |
| | single | 314 | 625 | 248 | 873 | 70 | 11 | 884 | 99 | 17 | 1 314 |
| | married | 458 | 894 | 262 | 1 156 | 212 | 14 | 1 170 | 209 | 34 | 1 871 |
| | divorced | 42 | 114 | 51 | 165 | 36 | 2 | 167 | 17 | 2 | 228 |
| | widow | – | 12 | 3 | 15 | 4 | – | 15 | 1 | – | 16 |
| | unannounced | 3 | 4 | 1 | 5 | 1 | – | 5 | – | 1 | 9 |

POTRATY PODĽA DRUHU A VZDELANIA ŽENY

ABORTIONS ACCORDING TO THE TYPE AND EDUCATIONAL ATTAINMENT OF FEMALE

Tabuľka 8

| Vzdelanie Educational attainment | Spon- tánne potraty | Umelé prerušenie tehotenstva | | | | | | Iné potraty | Mimo- mater- nicové teho- tenstvá | Potraty spolu |
|---|---------------------------|------------------------------|--------------------------------------|---------------------------|--|---------------------------------------|---------------|----------------|---|------------------|
| | | legálne do 8. týždňa | legálne od 9. do 12. týždňa | spolu do 12. týždňa | z toho zo zdra- votných dôvodov | legálne od 13. do 24. týždňa | UPT spolu | | | |
| Spolu Total | 4 811 | 8 356 | 3 453 | 11 809 | 1 841 | 162 | 11 971 | 1 894 | 378 | 19 054 |
| Základné Primary | 1 033 | 1 310 | 886 | 2 196 | 417 | 37 | 2 233 | 301 | 45 | 3 612 |
| Stredné bez maturity Lower secondary | 904 | 2 279 | 1 030 | 3 309 | 474 | 28 | 3 337 | 391 | 71 | 4 703 |
| Stredné s maturitou Upper secondary | 2 094 | 3 976 | 1 346 | 5 322 | 755 | 74 | 5 396 | 888 | 202 | 8 580 |
| Bakalárske Bachelor's | 59 | 78 | 20 | 98 | 14 | 2 | 100 | 23 | 3 | 185 |
| Vysokoškolské University | 629 | 665 | 154 | 819 | 171 | 20 | 839 | 261 | 49 | 1 778 |
| Neudané Unannounced | 92 | 48 | 17 | 65 | 10 | 1 | 66 | 30 | 8 | 196 |

POTRATY PODĽA DRUHU A VEKU PLODU (V TÝŽDŇOCH)

ABORTIONS ACCORDING TO THE TYPE AND AGE OF FETUS (IN WEEKS)

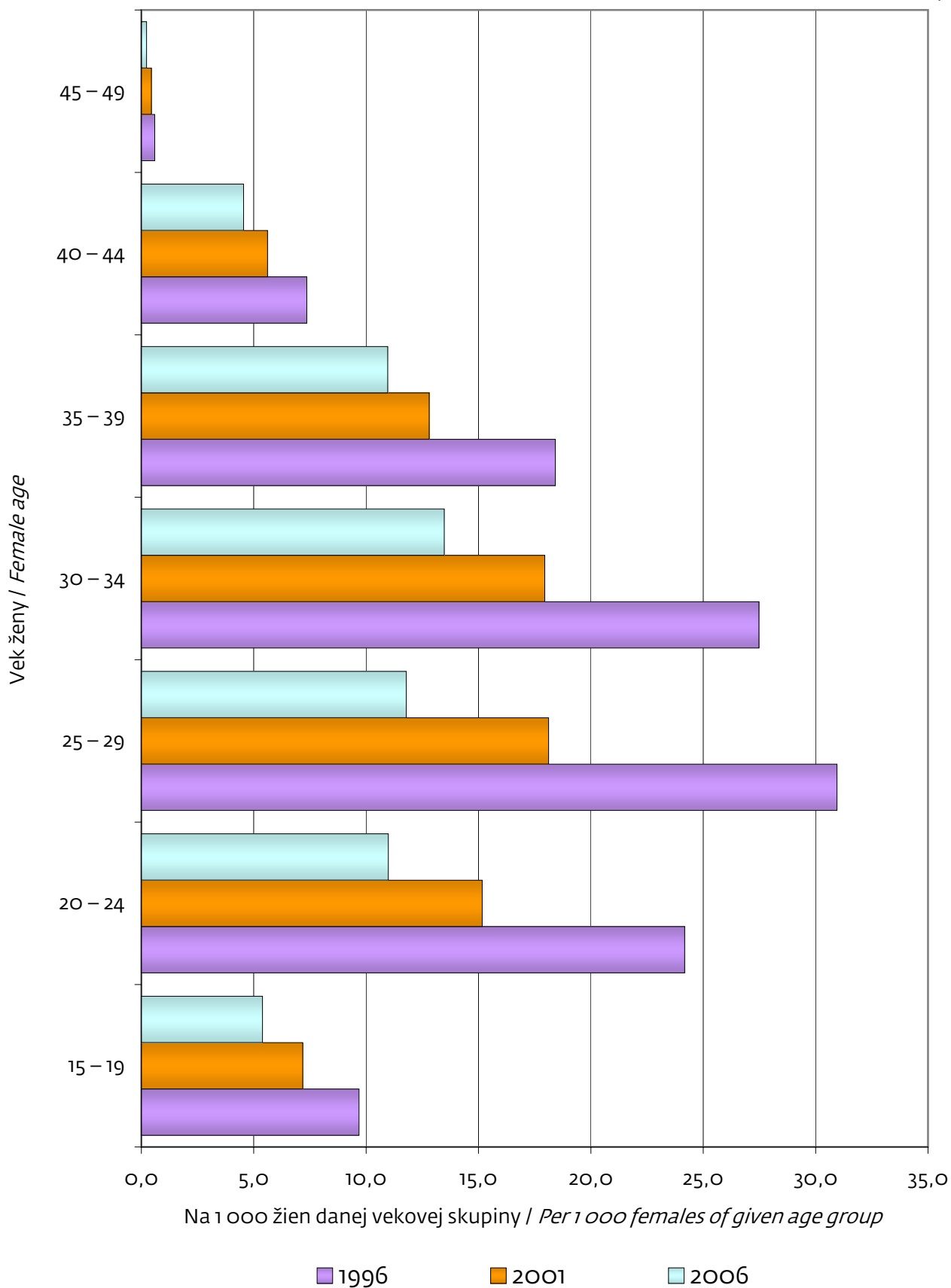
Tabuľka 9

| Vek plodu (v týždňoch) Fetus age (in weeks) | Spon- tánne potraty Spon- taneous aborti- ons | Umelé prerušenie tehotenstva Induced abortion | | | | | | Iné potraty Other aborti- ons | Mimo- mater- nicové teho- tenstvá Extraute- rine pregnan- cies | Potraty spolu Abortions total |
|--|---|--|---|--|---|---|-----------------------------|---|--|--|
| | | legálne do 8. týždňa legal till eighth week | legálne od 9. do 12. týždňa legal since ninth till twelfth week | spolu do 12. týždňa till twelf- th week total | z toho zo zdra- votných dôvodov of which due to health reasons | legálne od 13. do 24. týždňa legal since thirteenth till twenty fourth week | UPT spolu IA total | | | |
| Spolu Total | 4 811 | 8 356 | 3 453 | 11 809 | 1 841 | 162 | 11 971 | 1 894 | 378 | 19 054 |
| - 03 | 12 | 3 | - | 3 | - | - | 3 | 1 | - | 16 |
| 04 | 62 | 64 | - | 64 | 5 | - | 64 | 9 | 10 | 145 |
| 05 | 198 | 436 | - | 436 | 76 | - | 436 | 45 | 48 | 727 |
| 06 | 645 | 2 005 | - | 2 005 | 331 | - | 2 005 | 162 | 107 | 2 919 |
| 07 | 724 | 2 645 | - | 2 645 | 433 | - | 2 645 | 263 | 44 | 3 676 |
| 08 | 895 | 3 203 | - | 3 203 | 473 | - | 3 203 | 422 | 53 | 4 573 |
| 09 | 443 | - | 1 396 | 1 396 | 206 | - | 1 396 | 257 | 17 | 2 113 |
| 10 | 457 | - | 1 020 | 1 020 | 159 | - | 1 020 | 216 | 7 | 1 700 |
| 11 | 233 | - | 669 | 669 | 86 | - | 669 | 130 | 4 | 1 036 |
| 12 | 194 | - | 368 | 368 | 72 | - | 368 | 100 | 2 | 664 |
| 13 | 75 | - | - | - | - | 11 | 11 | 37 | - | 123 |
| 14 | 61 | - | - | - | - | 11 | 11 | 23 | - | 95 |
| 15 | 59 | - | - | - | - | 10 | 10 | 22 | - | 91 |
| 16 | 66 | - | - | - | - | 2 | 2 | 18 | - | 86 |
| 17 | 25 | - | - | - | - | 6 | 6 | 9 | - | 40 |
| 18 | 30 | - | - | - | - | 8 | 8 | 10 | - | 48 |
| 19 | 33 | - | - | - | - | 15 | 15 | 10 | - | 58 |
| 20 | 57 | - | - | - | - | 20 | 20 | 19 | - | 96 |
| 21 | 27 | - | - | - | - | 28 | 28 | 7 | - | 62 |
| 22 | 44 | - | - | - | - | 22 | 22 | 5 | - | 71 |
| 23 | 29 | - | - | - | - | 18 | 18 | 7 | 1 | 55 |
| 24 | 17 | - | - | - | - | 11 | 11 | 9 | 1 | 38 |
| 25 | 8 | - | - | - | - | - | - | 4 | - | 12 |
| 26 | 13 | - | - | - | - | - | - | 6 | - | 19 |
| 27 | 10 | - | - | - | - | - | - | 4 | - | 14 |
| 28 | 5 | - | - | - | - | - | - | 4 | - | 9 |
| Neudaný Unannounced | 389 | - | - | - | - | - | - | 95 | 84 | 568 |

VÝVOJ POČTU UPT PODĽA VEKU ŽENY

TREND OF NUMBER OF IA ACCORDING TO FEMALE AGE

Graf 10



POTRATY PODĽA DRUHU, VEKU PLODU A ÚZEMIA ZDRAVOTNÍCKEHO ZARIADENIA

ABORTIONS ACCORDING TO THE TYPE, FETUS AGE AND HEALTH FACILITY TERRITORY

Tabuľka 10

1/2

| Územie zdravotníckeho zariadenia | Vek plodu (v týždňoch) | Spon-tánne potraty | Umelé prerušenie tehotenstva | | | | | | Iné potraty | Mimo-mater-nicové teho-tenstvá | Potraty spolu |
|----------------------------------|------------------------|--------------------|------------------------------|-----------------------------|---------------------|--------------------------------|------------------------------|---------------|--------------|--------------------------------|---------------|
| | | | legálne do 8. týždňa | legálne od 9. do 12. týždňa | spolu do 12. týždňa | z toho zo zdra-votných dôvodov | legálne od 13. do 24. týždňa | UPT spolu | | | |
| Slovenská republika | spolu | 4 827 | 8 364 | 3 458 | 11 822 | 1 841 | 162 | 11 984 | 1 896 | 380 | 19 087 |
| | 01 – 08 | 2 548 | 8 364 | – | 8 364 | 1 318 | – | 8 364 | 903 | 263 | 12 078 |
| | 09 – 12 | 1 329 | – | 3 458 | 3 458 | 523 | – | 3 458 | 704 | 30 | 5 521 |
| | 13 a viac | 560 | – | – | – | – | 162 | 162 | 194 | 2 | 918 |
| | neudaný | 390 | – | – | – | – | – | – | 95 | 85 | 570 |
| Bratislavský kraj | spolu | 723 | 1 206 | 467 | 1 673 | 182 | 36 | 1 709 | 144 | 37 | 2 613 |
| | 01 – 08 | 349 | 1 206 | – | 1 206 | 142 | – | 1 206 | 59 | 26 | 1 640 |
| | 09 – 12 | 181 | – | 467 | 467 | 40 | – | 467 | 52 | 4 | 704 |
| | 13 a viac | 63 | – | – | – | – | 36 | 36 | 19 | – | 118 |
| | neudaný | 130 | – | – | – | – | – | – | 14 | 7 | 151 |
| Trnavský kraj | spolu | 368 | 1 034 | 454 | 1 488 | 169 | 11 | 1 499 | 201 | 27 | 2 095 |
| | 01 – 08 | 172 | 1 034 | – | 1 034 | 118 | – | 1 034 | 92 | 14 | 1 312 |
| | 09 – 12 | 118 | – | 454 | 454 | 51 | – | 454 | 78 | 3 | 653 |
| | 13 a viac | 37 | – | – | – | – | 11 | 11 | 10 | – | 58 |
| | neudaný | 41 | – | – | – | – | – | – | 21 | 10 | 72 |
| Trenčiansky kraj | spolu | 376 | 770 | 329 | 1 099 | 145 | 19 | 1 118 | 332 | 43 | 1 869 |
| | 01 – 08 | 197 | 770 | – | 770 | 99 | – | 770 | 124 | 25 | 1 116 |
| | 09 – 12 | 126 | – | 329 | 329 | 46 | – | 329 | 163 | 4 | 622 |
| | 13 a viac | 39 | – | – | – | – | 19 | 19 | 32 | – | 90 |
| | neudaný | 14 | – | – | – | – | – | – | 13 | 14 | 41 |
| Nitriansky kraj | spolu | 521 | 919 | 361 | 1 280 | 299 | 10 | 1 290 | 184 | 49 | 2 044 |
| | 01 – 08 | 274 | 919 | – | 919 | 211 | – | 919 | 100 | 38 | 1 331 |
| | 09 – 12 | 140 | – | 361 | 361 | 88 | – | 361 | 65 | – | 566 |
| | 13 a viac | 54 | – | – | – | – | 10 | 10 | 16 | – | 80 |
| | neudaný | 53 | – | – | – | – | – | – | 3 | 11 | 67 |
| Žilinský kraj | spolu | 590 | 782 | 435 | 1 217 | 193 | 19 | 1 236 | 193 | 65 | 2 084 |
| | 01 – 08 | 335 | 782 | – | 782 | 121 | – | 782 | 92 | 35 | 1 244 |
| | 09 – 12 | 181 | – | 435 | 435 | 72 | – | 435 | 76 | 6 | 698 |
| | 13 a viac | 43 | – | – | – | – | 19 | 19 | 18 | 1 | 81 |
| | neudaný | 31 | – | – | – | – | – | – | 7 | 23 | 61 |

POTRATY PODĽA DRUHU, VEKU PLODU A ÚZEMIA ZDRAVOTNÍCKEHO ZARIADENIA

ABORTIONS ACCORDING TO THE TYPE, FETUS AGE AND HEALTH FACILITY TERRITORY

Tabuľka 10
2/2

| Health facility territory | Fetus age (in weeks) | Spontaneous abortions | Induced abortion | | | | | | IA total | Other abortions | Extrauterine pregnancies | Abortions total |
|---------------------------|----------------------|-----------------------|------------------------|-------------------------------------|-------------------------|--------------------------------|--|--------------|------------|-----------------|--------------------------|-----------------|
| | | | legal till eighth week | legal since ninth till twelfth week | till twelfth week total | of which due to health reasons | legal since thirteenth till twenty fourth week | | | | | |
| Bansko-bystrický kraj | total | 599 | 1 210 | 505 | 1 715 | 346 | 26 | 1 741 | 158 | 61 | 2 559 | |
| | 01 – 08 | 316 | 1 210 | – | 1 210 | 245 | – | 1 210 | 84 | 45 | 1 655 | |
| | 09 – 12 | 171 | – | 505 | 505 | 101 | – | 505 | 51 | 6 | 733 | |
| | 13 and more | 78 | – | – | – | – | – | 26 | 26 | 14 | – | 118 |
| | unannounced | 34 | – | – | – | – | – | – | – | 9 | 10 | 53 |
| Prešovský kraj | total | 842 | 688 | 300 | 988 | 172 | 16 | 1 004 | 354 | 42 | 2 242 | |
| | 01 – 08 | 478 | 688 | – | 688 | 126 | – | 688 | 165 | 34 | 1 365 | |
| | 09 – 12 | 218 | – | 300 | 300 | 46 | – | 300 | 120 | 3 | 641 | |
| | 13 and more | 126 | – | – | – | – | – | 16 | 16 | 53 | 1 | 196 |
| | unannounced | 20 | – | – | – | – | – | – | – | 16 | 4 | 40 |
| Košický kraj | total | 808 | 1 755 | 607 | 2 362 | 335 | 25 | 2 387 | 330 | 56 | 3 581 | |
| | 01 – 08 | 427 | 1 755 | – | 1 755 | 256 | – | 1 755 | 187 | 46 | 2 415 | |
| | 09 – 12 | 194 | – | 607 | 607 | 79 | – | 607 | 99 | 4 | 904 | |
| | 13 and more | 120 | – | – | – | – | – | 25 | 25 | 32 | – | 177 |
| | unannounced | 67 | – | – | – | – | – | – | – | 12 | 6 | 85 |

**POTRATY PODĽA POČTU DOTERAJŠÍCH PÔRODOV, DRUHU TERAJŠIEHO POTRATU
A ÚZEMIA TRVALÉHO BYDLISKA ŽENY**

ABORTIONS ACCORDING TO NUMBER OF DELIVERIES TO DATE, THE TYPE OF PRESENT ABORTION
AND TERRITORY OF FEMALE PERMANENT ADDRESS

Tabuľka 12
1/2

| Územie trvalého bydliska | Počet doterajších pôrodov | Spontánne potraty | Umelé prerušenie tehotenstva | | | | | | Iné potraty | Mimo-maternicové tehotenstvá | Potraty spolu |
|--------------------------|---------------------------|-------------------|------------------------------|-----------------------------|---------------------|-------------------------------|------------------------------|---------------|--------------|------------------------------|---------------|
| | | | legálne do 8. týždňa | legálne od 9. do 12. týždňa | spolu do 12. týždňa | z toho zo zdravotných dôvodov | legálne od 13. do 24. týždňa | UPT spolu | | | |
| Slovenská republika | spolu | 4 811 | 8 356 | 3 453 | 11 809 | 1 841 | 162 | 11 971 | 1 894 | 378 | 19 054 |
| | žiadny | 1 811 | 2 033 | 943 | 2 976 | 171 | 66 | 3 042 | 795 | 154 | 5 802 |
| | jeden | 1 500 | 2 096 | 783 | 2 879 | 350 | 48 | 2 927 | 599 | 145 | 5 171 |
| | dva | 849 | 3 007 | 957 | 3 964 | 790 | 28 | 3 992 | 288 | 58 | 5 187 |
| | tri a viac | 651 | 1 220 | 770 | 1 990 | 530 | 20 | 2 010 | 212 | 21 | 2 894 |
| Bratislavský kraj | spolu | 622 | 1 054 | 387 | 1 441 | 170 | 21 | 1 462 | 117 | 33 | 2 234 |
| | žiadny | 276 | 301 | 130 | 431 | 12 | 13 | 444 | 58 | 16 | 794 |
| | jeden | 210 | 339 | 101 | 440 | 43 | 7 | 447 | 37 | 13 | 707 |
| | dva | 106 | 337 | 108 | 445 | 82 | 1 | 446 | 20 | 3 | 575 |
| | tri a viac | 30 | 77 | 48 | 125 | 33 | – | 125 | 2 | 1 | 158 |
| Trnavský kraj | spolu | 390 | 855 | 348 | 1 203 | 170 | 13 | 1 216 | 223 | 32 | 1 861 |
| | žiadny | 169 | 192 | 91 | 283 | 13 | 3 | 286 | 115 | 16 | 586 |
| | jeden | 125 | 246 | 78 | 324 | 40 | 6 | 330 | 72 | 12 | 539 |
| | dva | 48 | 333 | 104 | 437 | 76 | 1 | 438 | 23 | 4 | 513 |
| | tri a viac | 48 | 84 | 75 | 159 | 41 | 3 | 162 | 13 | – | 223 |
| Trenčiansky kraj | spolu | 383 | 769 | 338 | 1 107 | 141 | 20 | 1 127 | 315 | 41 | 1 866 |
| | žiadny | 153 | 188 | 103 | 291 | 15 | 5 | 296 | 147 | 15 | 611 |
| | jeden | 137 | 170 | 98 | 268 | 26 | 10 | 278 | 110 | 16 | 541 |
| | dva | 64 | 304 | 82 | 386 | 68 | 2 | 388 | 44 | 9 | 505 |
| | tri a viac | 29 | 107 | 55 | 162 | 32 | 3 | 165 | 14 | 1 | 209 |
| Nitriansky kraj | spolu | 536 | 1 153 | 474 | 1 627 | 316 | 19 | 1 646 | 182 | 49 | 2 413 |
| | žiadny | 200 | 284 | 127 | 411 | 36 | 9 | 420 | 82 | 24 | 726 |
| | jeden | 193 | 305 | 118 | 423 | 67 | 4 | 427 | 62 | 20 | 702 |
| | dva | 89 | 432 | 124 | 556 | 138 | 5 | 561 | 27 | 4 | 681 |
| | tri a viac | 54 | 132 | 105 | 237 | 75 | 1 | 238 | 11 | 1 | 304 |
| Žilinský kraj | spolu | 590 | 838 | 448 | 1 286 | 196 | 19 | 1 305 | 205 | 63 | 2 163 |
| | žiadny | 219 | 210 | 134 | 344 | 21 | 10 | 354 | 82 | 21 | 676 |
| | jeden | 202 | 173 | 94 | 267 | 27 | 2 | 269 | 58 | 28 | 557 |
| | dva | 111 | 329 | 131 | 460 | 87 | 5 | 465 | 35 | 10 | 621 |
| | tri a viac | 58 | 126 | 89 | 215 | 61 | 2 | 217 | 30 | 4 | 309 |

**POTRATY PODĽA POČTU DOTERAJŠÍCH PÔRODOV, DRUHU TERAJŠIEHO POTRATU
A ÚZEMIA TRVALÉHO BYDLISKA ŽENY**

ABORTIONS ACCORDING TO NUMBER OF DELIVERIES TO DATE, THE TYPE OF PRESENT ABORTION
AND TERRITORY OF FEMALE PERMANENT ADDRESS

Tabuľka 12
2/2

| Territory of permanent address | Number of deliveries to date | Spontaneous abortions | Induced abortion | | | | | | Other abortions | Extrauterine pregnancies | Abortions total |
|--------------------------------|------------------------------|-----------------------|------------------------|-------------------------------------|-------------------------|--------------------------------|--|--------------|-----------------|--------------------------|-----------------|
| | | | legal till eighth week | legal since ninth till twelfth week | till twelfth week total | of which due to health reasons | legal since thirteenth till twenty fourth week | IA total | | | |
| Bansko-bystrický kraj | total | 618 | 1 203 | 518 | 1 721 | 340 | 25 | 1 746 | 161 | 59 | 2 584 |
| | not any | 236 | 279 | 125 | 404 | 32 | 13 | 417 | 60 | 22 | 735 |
| | one | 177 | 298 | 111 | 409 | 66 | 9 | 418 | 52 | 22 | 669 |
| | two | 114 | 453 | 160 | 613 | 151 | 2 | 615 | 25 | 13 | 767 |
| | three and more | 91 | 173 | 122 | 295 | 91 | 1 | 296 | 24 | 2 | 413 |
| Prešovský kraj | total | 855 | 835 | 375 | 1 210 | 185 | 18 | 1 228 | 365 | 47 | 2 495 |
| | not any | 274 | 206 | 92 | 298 | 10 | 5 | 303 | 114 | 19 | 710 |
| | one | 217 | 151 | 63 | 214 | 22 | 3 | 217 | 118 | 14 | 566 |
| | two | 173 | 257 | 87 | 344 | 65 | 5 | 349 | 64 | 8 | 594 |
| | three and more | 191 | 221 | 133 | 354 | 88 | 5 | 359 | 69 | 6 | 625 |
| Košícký kraj | total | 817 | 1 649 | 565 | 2 214 | 323 | 27 | 2 241 | 326 | 54 | 3 438 |
| | not any | 284 | 373 | 141 | 514 | 32 | 8 | 522 | 137 | 21 | 964 |
| | one | 239 | 414 | 120 | 534 | 59 | 7 | 541 | 90 | 20 | 890 |
| | two | 144 | 562 | 161 | 723 | 123 | 7 | 730 | 50 | 7 | 931 |
| | three and more | 150 | 300 | 143 | 443 | 109 | 5 | 448 | 49 | 6 | 653 |

**POTRATY PODĽA POČTU DOTERAJŠÍCH UMELÝCH PRERUŠENÍ TEHOTENSTVA,
DRUHU TERAJŠIEHO POTRATU A ÚZEMIA TRVALÉHO BYDLISKA ŽENY**

ABORTIONS ACCORDING TO NUMBER OF INDUCED ABORTIONS TO DATE, THE TYPE
OF PRESENT ABORTION AND TERRITORY OF PERMANENT ADDRESS OF FEMALE

Tabuľka 13
1/2

| Územie trvalého bydliska | Počet doterajších UPT | Spon- tánne potraty | Umelé prerušenie tehotenstva | | | | | | Iné potraty | Mimo- mater- nicové teho- tenstvá | Potraty spolu |
|--------------------------------|-----------------------------|---------------------------|------------------------------|--------------------------------------|---------------------------|--|---------------------------------------|---------------|----------------|---|------------------|
| | | | legálne do 8. týždňa | legálne od 9. do 12. týždňa | spolu do 12. týždňa | z toho zo zdra- votných dôvodov | legálne od 13. do 24. týždňa | UPT spolu | | | |
| Slovenská republika | spolu | 4 811 | 8 356 | 3 453 | 11 809 | 1 841 | 162 | 11 971 | 1 894 | 378 | 19 054 |
| | žiadny | 4 101 | 5 522 | 2 190 | 7 712 | 984 | 132 | 7 844 | 1 663 | 325 | 13 933 |
| | jeden | 494 | 1 845 | 781 | 2 626 | 496 | 23 | 2 649 | 166 | 45 | 3 354 |
| | dva | 162 | 655 | 295 | 950 | 211 | 4 | 954 | 45 | 7 | 1 168 |
| | tri a viac | 54 | 334 | 187 | 521 | 150 | 3 | 524 | 20 | 1 | 599 |
| Bratislavský kraj | spolu | 622 | 1 054 | 387 | 1 441 | 170 | 21 | 1 462 | 117 | 33 | 2 234 |
| | žiadny | 502 | 664 | 242 | 906 | 86 | 16 | 922 | 102 | 28 | 1 554 |
| | jeden | 76 | 267 | 87 | 354 | 52 | 5 | 359 | 9 | 5 | 449 |
| | dva | 34 | 84 | 29 | 113 | 18 | – | 113 | 4 | – | 151 |
| | tri a viac | 10 | 39 | 29 | 68 | 14 | – | 68 | 2 | – | 80 |
| Trnavský kraj | spolu | 390 | 855 | 348 | 1 203 | 170 | 13 | 1 216 | 223 | 32 | 1 861 |
| | žiadny | 326 | 584 | 220 | 804 | 96 | 10 | 814 | 191 | 28 | 1 359 |
| | jeden | 47 | 194 | 76 | 270 | 41 | 1 | 271 | 24 | 3 | 345 |
| | dva | 11 | 55 | 33 | 88 | 24 | 1 | 89 | 7 | 1 | 108 |
| | tri a viac | 6 | 22 | 19 | 41 | 9 | 1 | 42 | 1 | – | 49 |
| Trenčiansky kraj | spolu | 383 | 769 | 338 | 1 107 | 141 | 20 | 1 127 | 315 | 41 | 1 866 |
| | žiadny | 323 | 533 | 231 | 764 | 77 | 15 | 779 | 280 | 32 | 1 414 |
| | jeden | 45 | 156 | 74 | 230 | 34 | 2 | 232 | 28 | 8 | 313 |
| | dva | 12 | 60 | 24 | 84 | 16 | 2 | 86 | 5 | 1 | 104 |
| | tri a viac | 3 | 20 | 9 | 29 | 14 | 1 | 30 | 2 | – | 35 |
| Nitriansky kraj | spolu | 536 | 1 153 | 474 | 1 627 | 316 | 19 | 1 646 | 182 | 49 | 2 413 |
| | žiadny | 446 | 751 | 302 | 1 053 | 170 | 13 | 1 066 | 150 | 42 | 1 704 |
| | jeden | 64 | 258 | 100 | 358 | 88 | 5 | 363 | 22 | 5 | 454 |
| | dva | 21 | 102 | 40 | 142 | 35 | – | 142 | 9 | 2 | 174 |
| | tri a viac | 5 | 42 | 32 | 74 | 23 | 1 | 75 | 1 | – | 81 |
| Žilinský kraj | spolu | 590 | 838 | 448 | 1 286 | 196 | 19 | 1 305 | 205 | 63 | 2 163 |
| | žiadny | 527 | 577 | 280 | 857 | 99 | 17 | 874 | 190 | 54 | 1 645 |
| | jeden | 53 | 164 | 113 | 277 | 60 | 2 | 279 | 13 | 9 | 354 |
| | dva | 7 | 64 | 37 | 101 | 28 | – | 101 | 2 | – | 110 |
| | tri a viac | 3 | 33 | 18 | 51 | 9 | – | 51 | – | – | 54 |

**POTRATY PODĽA POČTU DOTERAJŠÍCH UMELÝCH PRERUŠENÍ TEHOTENSTVA,
DRUHU TERAJŠIEHO POTRATU A ÚZEMIA TRVALÉHO BYDLISKA ŽENY**

ABORTIONS ACCORDING TO NUMBER OF INDUCED ABORTIONS TO DATE, THE TYPE
OF PRESENT ABORTION AND TERRITORY OF PERMANENT ADDRESS OF FEMALE

Tabuľka 13
2/2

| Territory of permanent address | Number of IA to date | Spontaneous abortions | Induced abortion | | | | | | IA total | Other abortions | Extrauterine pregnancies | Abortions total |
|--------------------------------|-----------------------|-----------------------|------------------------|-------------------------------------|-------------------------|--------------------------------|--|--------------|------------|-----------------|--------------------------|-----------------|
| | | | legal till eighth week | legal since ninth till twelfth week | till twelfth week total | of which due to health reasons | legal since thirteenth till twenty fourth week | | | | | |
| Bansko-bystrický kraj | total | 618 | 1 203 | 518 | 1 721 | 340 | 25 | 1 746 | 161 | 59 | 2 584 | |
| | <i>not any</i> | 482 | 736 | 302 | 1 038 | 172 | 22 | 1 060 | 132 | 49 | 1 723 | |
| | <i>one</i> | 81 | 286 | 122 | 408 | 94 | 2 | 410 | 19 | 8 | 518 | |
| | <i>two</i> | 38 | 106 | 56 | 162 | 36 | 1 | 163 | 7 | 1 | 209 | |
| | <i>three and more</i> | 17 | 75 | 38 | 113 | 38 | – | 113 | 3 | 1 | 134 | |
| Prešovský kraj | total | 855 | 835 | 375 | 1 210 | 185 | 18 | 1 228 | 365 | 47 | 2 495 | |
| | <i>not any</i> | 802 | 614 | 259 | 873 | 110 | 17 | 890 | 341 | 46 | 2 079 | |
| | <i>one</i> | 41 | 161 | 76 | 237 | 52 | 1 | 238 | 18 | – | 297 | |
| | <i>two</i> | 12 | 38 | 28 | 66 | 16 | – | 66 | 3 | 1 | 82 | |
| | <i>three and more</i> | – | 22 | 12 | 34 | 7 | – | 34 | 3 | – | 37 | |
| Košický kraj | total | 817 | 1 649 | 565 | 2 214 | 323 | 27 | 2 241 | 326 | 54 | 3 438 | |
| | <i>not any</i> | 693 | 1 063 | 354 | 1 417 | 174 | 22 | 1 439 | 277 | 46 | 2 455 | |
| | <i>one</i> | 87 | 359 | 133 | 492 | 75 | 5 | 497 | 33 | 7 | 624 | |
| | <i>two</i> | 27 | 146 | 48 | 194 | 38 | – | 194 | 8 | 1 | 230 | |
| | <i>three and more</i> | 10 | 81 | 30 | 111 | 36 | – | 111 | 8 | – | 129 | |

POTRATY PODĽA POČTU DOTERAJŠÍCH SPONTÁNNYCH POTRATOV, DRUHU TERAJŠIEHO POTRATU A ÚZEMIA TRVALÉHO BYDLISKA ŽENY

ABORTIONS ACCORDING TO NUMBER OF SPONTANEOUS ABORTIONS TO DATE, THE TYPE OF PRESENT ABORTION AND TERRITORY OF FEMALE PERMANENT ADDRESS

Tabuľka 14
1/2

| Územie trvalého bydliska | Počet doterajších spontánnych potratov | Spontánne potraty | Umelé prerušenie tehotenstva | | | | | | Iné potraty | Mimo-maternicové tehotenstvá | Potraty spolu |
|--------------------------|--|-------------------|------------------------------|-----------------------------|---------------------|-------------------------------|------------------------------|---------------|--------------|------------------------------|---------------|
| | | | legálne do 8. týždňa | legálne od 9. do 12. týždňa | spolu do 12. týždňa | z toho zo zdravotných dôvodov | legálne od 13. do 24. týždňa | UPT spolu | | | |
| Slovenská republika | spolu | 4 811 | 8 356 | 3 453 | 11 809 | 1 841 | 162 | 11 971 | 1 894 | 378 | 19 054 |
| | žiadny | 3 738 | 7 309 | 2 980 | 10 289 | 1 481 | 128 | 10 417 | 1 488 | 291 | 15 934 |
| | jeden | 788 | 854 | 378 | 1 232 | 287 | 28 | 1 260 | 294 | 74 | 2 416 |
| | dva | 196 | 140 | 69 | 209 | 45 | 4 | 213 | 78 | 10 | 497 |
| | tri a viac | 89 | 53 | 26 | 79 | 28 | 2 | 81 | 34 | 3 | 207 |
| Bratislavský kraj | spolu | 622 | 1 054 | 387 | 1 441 | 170 | 21 | 1 462 | 117 | 33 | 2 234 |
| | žiadny | 501 | 929 | 334 | 1 263 | 118 | 19 | 1 282 | 101 | 26 | 1 910 |
| | jeden | 91 | 103 | 44 | 147 | 40 | 2 | 149 | 10 | 7 | 257 |
| | dva | 22 | 14 | 5 | 19 | 5 | – | 19 | 5 | – | 46 |
| | tri a viac | 8 | 8 | 4 | 12 | 7 | – | 12 | 1 | – | 21 |
| Trnavský kraj | spolu | 390 | 855 | 348 | 1 203 | 170 | 13 | 1 216 | 223 | 32 | 1 861 |
| | žiadny | 317 | 745 | 317 | 1 062 | 141 | 9 | 1 071 | 180 | 26 | 1 594 |
| | jeden | 59 | 95 | 21 | 116 | 25 | 3 | 119 | 36 | 6 | 220 |
| | dva | 9 | 12 | 7 | 19 | 3 | – | 19 | 4 | – | 32 |
| | tri a viac | 5 | 3 | 3 | 6 | 1 | 1 | 7 | 3 | – | 15 |
| Trenčiansky kraj | spolu | 383 | 769 | 338 | 1 107 | 141 | 20 | 1 127 | 315 | 41 | 1 866 |
| | žiadny | 299 | 684 | 312 | 996 | 120 | 18 | 1 014 | 256 | 30 | 1 599 |
| | jeden | 69 | 70 | 22 | 92 | 19 | 2 | 94 | 46 | 10 | 219 |
| | dva | 12 | 11 | 4 | 15 | 1 | – | 15 | 8 | 1 | 36 |
| | tri a viac | 3 | 4 | – | 4 | 1 | – | 4 | 5 | – | 12 |
| Nitriansky kraj | spolu | 536 | 1 153 | 474 | 1 627 | 316 | 19 | 1 646 | 182 | 49 | 2 413 |
| | žiadny | 429 | 1 009 | 409 | 1 418 | 262 | 15 | 1 433 | 142 | 39 | 2 043 |
| | jeden | 82 | 110 | 56 | 166 | 44 | 4 | 170 | 25 | 8 | 285 |
| | dva | 18 | 27 | 7 | 34 | 7 | – | 34 | 11 | 2 | 65 |
| | tri a viac | 7 | 7 | 2 | 9 | 3 | – | 9 | 4 | – | 20 |
| Žilinský kraj | spolu | 590 | 838 | 448 | 1 286 | 196 | 19 | 1 305 | 205 | 63 | 2 163 |
| | žiadny | 458 | 740 | 391 | 1 131 | 158 | 15 | 1 146 | 169 | 41 | 1 814 |
| | jeden | 96 | 78 | 49 | 127 | 30 | 3 | 130 | 29 | 17 | 272 |
| | dva | 29 | 17 | 5 | 22 | 6 | 1 | 23 | 3 | 4 | 59 |
| | tri a viac | 7 | 3 | 3 | 6 | 2 | – | 6 | 4 | 1 | 18 |

POTRATY PODĽA POČTU DOTERAJŠÍCH SPONTÁNNYCH POTRATOV, DRUHU TERAJŠIEHO POTRATU A ÚZEMIA TRVALÉHO BYDLISKA ŽENY

ABORTIONS ACCORDING TO NUMBER OF SPONTANEOUS ABORTIONS TO DATE, THE TYPE OF PRESENT ABORTION AND TERRITORY OF FEMALE PERMANENT ADDRESS

Tabuľka 14
2/2

| Territory of permanent address | Number of spontaneous abortions to date | Spontaneous abortions | Induced abortion | | | | | | Other abortions | Extrauterine pregnancies | Abortions total |
|--------------------------------|---|-----------------------|------------------------|-------------------------------------|-------------------------|--------------------------------|--|--------------|-----------------|--------------------------|-----------------|
| | | | legal till eighth week | legal since ninth till twelfth week | till twelfth week total | of which due to health reasons | legal since thirteenth till twenty fourth week | IA total | | | |
| Bansko-bystrický kraj | total | 618 | 1 203 | 518 | 1 721 | 340 | 25 | 1 746 | 161 | 59 | 2 584 |
| | not any | 467 | 1 047 | 419 | 1 466 | 273 | 20 | 1 486 | 123 | 48 | 2 124 |
| | one | 110 | 121 | 84 | 205 | 50 | 5 | 210 | 33 | 11 | 364 |
| | two | 28 | 27 | 11 | 38 | 11 | – | 38 | 5 | – | 71 |
| | three and more | 13 | 8 | 4 | 12 | 6 | – | 12 | – | – | 25 |
| Prešovský kraj | total | 855 | 835 | 375 | 1 210 | 185 | 18 | 1 228 | 365 | 47 | 2 495 |
| | not any | 649 | 723 | 323 | 1 046 | 140 | 15 | 1 061 | 277 | 37 | 2 024 |
| | one | 143 | 96 | 34 | 130 | 38 | 2 | 132 | 60 | 7 | 342 |
| | two | 37 | 6 | 11 | 17 | 4 | – | 17 | 21 | 2 | 77 |
| | three and more | 26 | 10 | 7 | 17 | 3 | 1 | 18 | 7 | 1 | 52 |
| Košický kraj | total | 817 | 1 649 | 565 | 2 214 | 323 | 27 | 2 241 | 326 | 54 | 3 438 |
| | not any | 618 | 1 432 | 475 | 1 907 | 269 | 17 | 1 924 | 240 | 44 | 2 826 |
| | one | 138 | 181 | 68 | 249 | 41 | 7 | 256 | 55 | 8 | 457 |
| | two | 41 | 26 | 19 | 45 | 8 | 3 | 48 | 21 | 1 | 111 |
| | three and more | 20 | 10 | 3 | 13 | 5 | – | 13 | 10 | 1 | 44 |

**POTRATY PODĽA DRUHU, UŽÍVANIA VNÚTROMATERNICOVEJ ANTIKONCEPCIE
A ÚZEMIA TRVALÉHO BYDLISKA ŽENY**

ABORTIONS ACCORDING TO THE TYPE, USING OF INTRAUTERINE CONTRACEPTION
AND TERRITORY OF FEMALE PERMANENT ADDRESS

Tabuľka 19
1/3

| Územie trvalého bydliska Territory of permanent address | Spon- taneous aborti- ons | Induced abortion | | | | | | Other aborti- ons | Extraute- rine pregnan- cies | Abortions total |
|--|------------------------------------|------------------------------|--|----------------------------------|---|--|-------------|-------------------------|---------------------------------------|--------------------|
| | | legal till eighth week | legal since ninth till twelfth week | till twelfth week total | of which due to health reasons | legal since thirte- enth till twenty fourth week | IA total | | | |
| Slovenská republika | 16 | 144 | 46 | 190 | 190 | - | 190 | 14 | 5 | 225 |
| Bratislavský kraj | 4 | 10 | 1 | 11 | 11 | - | 11 | 1 | 1 | 17 |
| Bratislava I | 1 | - | - | - | - | - | - | 1 | - | 2 |
| Bratislava II | - | 1 | - | 1 | 1 | - | 1 | - | - | 1 |
| Bratislava III | 1 | - | - | - | - | - | - | - | - | 1 |
| Bratislava IV | 1 | - | - | - | - | - | - | - | - | 1 |
| Bratislava V | - | 5 | - | 5 | 5 | - | 5 | - | 1 | 6 |
| Malacky | - | 1 | - | 1 | 1 | - | 1 | - | - | 1 |
| Pezinok | 1 | - | 1 | 1 | 1 | - | 1 | - | - | 2 |
| Senec | - | 3 | - | 3 | 3 | - | 3 | - | - | 3 |
| Trnavský kraj | 1 | 24 | 4 | 28 | 28 | - | 28 | 4 | - | 33 |
| Dunajská Streda | - | 2 | - | 2 | 2 | - | 2 | - | - | 2 |
| Galanta | - | 3 | 3 | 6 | 6 | - | 6 | 1 | - | 7 |
| Hlohovec | 1 | 1 | - | 1 | 1 | - | 1 | - | - | 2 |
| Piešťany | - | 12 | - | 12 | 12 | - | 12 | - | - | 12 |
| Senica | - | 4 | - | 4 | 4 | - | 4 | - | - | 4 |
| Skalica | - | 2 | - | 2 | 2 | - | 2 | - | - | 2 |
| Trnava | - | - | 1 | 1 | - | - | 1 | 3 | - | 4 |
| Trenčiansky kraj | - | 11 | 6 | 17 | 17 | - | 17 | 2 | 1 | 20 |
| Bánovce nad Bebravou | - | - | - | - | - | - | - | - | - | - |
| Ilava | - | - | - | - | - | - | - | - | - | - |
| Myjava | - | - | - | - | - | - | - | - | - | - |
| Nové Mesto nad Váhom | - | 2 | - | 2 | 2 | - | 2 | 1 | - | 3 |
| Partizánske | - | - | - | - | - | - | - | - | - | - |
| Považská Bystrica | - | - | - | - | - | - | - | 1 | - | 1 |
| Prievidza | - | 7 | 4 | 11 | 11 | - | 11 | - | 1 | 12 |
| Púchov | - | 1 | - | 1 | 1 | - | 1 | - | - | 1 |
| Trenčín | - | 1 | 2 | 3 | 3 | - | 3 | - | - | 3 |

**POTRATY PODĽA DRUHU, UŽÍVANIA VNÚTROMATERNICOVEJ ANTIKONCEPCIE
A ÚZEMIA TRVALÉHO BYDLISKA ŽENY**

ABORTIONS ACCORDING TO THE TYPE, USING OF INTRAUTERINE CONTRACEPTION
AND TERRITORY OF FEMALE PERMANENT ADDRESS

Tabuľka 19
2/3

| Územie trvalého bydliska | Spon- tánne potraty | Umelé prerušenie tehotenstva | | | | | | Iné potraty | Mimo- mater- nicové teho- tenstvá | Potraty spolu |
|-----------------------------|---------------------------|------------------------------|--------------------------------------|---------------------------|--|---------------------------------------|--------------|----------------|---|------------------|
| | | legálne do 8. týždňa | legálne od 9. do 12. týždňa | spolu do 12. týždňa | z toho zo zdra- votných dôvodov | legálne od 13. do 24. týždňa | UPT spolu | | | |
| Nitriansky kraj | 1 | 17 | 6 | 23 | 23 | – | 23 | – | 1 | 25 |
| Komárno | – | 2 | 3 | 5 | 5 | – | 5 | – | – | 5 |
| Levice | 1 | 6 | 1 | 7 | 7 | – | 7 | – | 1 | 9 |
| Nitra | – | – | – | – | – | – | – | – | – | – |
| Nové Zámky | – | 3 | – | 3 | 3 | – | 3 | – | – | 3 |
| Šaľa | – | 2 | 2 | 4 | 4 | – | 4 | – | – | 4 |
| Topoľčany | – | 4 | – | 4 | 4 | – | 4 | – | – | 4 |
| Zlaté Moravce | – | – | – | – | – | – | – | – | – | – |
| Žilinský kraj | – | 9 | 4 | 13 | 13 | – | 13 | 3 | – | 16 |
| Bytča | – | – | – | – | – | – | – | – | – | – |
| Čadca | – | 1 | – | 1 | 1 | – | 1 | 1 | – | 2 |
| Dolný Kubín | – | 1 | – | 1 | 1 | – | 1 | – | – | 1 |
| Kysucké Nové Mesto | – | 1 | – | 1 | 1 | – | 1 | 1 | – | 2 |
| Liptovský Mikuláš | – | 4 | – | 4 | 4 | – | 4 | – | – | 4 |
| Martin | – | 1 | 1 | 2 | 2 | – | 2 | – | – | 2 |
| Námestovo | – | 1 | – | 1 | 1 | – | 1 | – | – | 1 |
| Ružomberok | – | – | 1 | 1 | 1 | – | 1 | – | – | 1 |
| Turčianske Teplice | – | – | – | – | – | – | – | – | – | – |
| Tvrdošín | – | – | – | – | – | – | – | – | – | – |
| Žilina | – | – | 2 | 2 | 2 | – | 2 | 1 | – | 3 |
| Banskobystrický kraj | 3 | 33 | 15 | 48 | 48 | – | 48 | 2 | – | 53 |
| Banská Bystrica | 2 | 4 | 5 | 9 | 9 | – | 9 | – | – | 11 |
| Banská Štiavnica | – | – | – | – | – | – | – | – | – | – |
| Brezno | – | 3 | 1 | 4 | 4 | – | 4 | – | – | 4 |
| Detva | – | – | – | – | – | – | – | – | – | – |
| Krupina | – | – | 1 | 1 | 1 | – | 1 | 1 | – | 2 |
| Lučenec | – | 7 | 1 | 8 | 8 | – | 8 | – | – | 8 |
| Poltár | – | 2 | 1 | 3 | 3 | – | 3 | – | – | 3 |
| Revúca | – | 5 | 2 | 7 | 7 | – | 7 | – | – | 7 |
| Rimavská Sobota | 1 | 5 | 3 | 8 | 8 | – | 8 | – | – | 9 |
| Veľký Krtíš | – | 1 | – | 1 | 1 | – | 1 | – | – | 1 |
| Zvolen | – | 4 | – | 4 | 4 | – | 4 | 1 | – | 5 |
| Žarnovica | – | – | – | – | – | – | – | – | – | – |
| Žiar nad Hronom | – | 2 | 1 | 3 | 3 | – | 3 | – | – | 3 |

**POTRATY PODĽA DRUHU, UŽÍVANIA VNÚTROMATERNICOVEJ ANTIKONCEPCIE
A ÚZEMIA TRVALÉHO BYDLISKA ŽENY**

ABORTIONS ACCORDING TO THE TYPE, USING OF INTRAUTERINE CONTRACEPTION
AND TERRITORY OF FEMALE PERMANENT ADDRESS

Tabuľka 19
3/3

| Territory of permanent address | Spon- taneous aborti- ons | Induced abortion | | | | | | Other aborti- ons | Extraute- rine pregnan- cies | Abortions total |
|--------------------------------------|------------------------------------|------------------------------|--|----------------------------------|---|--|-------------|-------------------------|---------------------------------------|--------------------|
| | | legal till eighth week | legal since ninth till twelfth week | till twelfth week total | of which due to health reasons | legal since thirte- enth till twenty fourth week | IA total | | | |
| Prešovský kraj | 5 | 16 | 2 | 18 | 18 | – | 18 | 1 | 1 | 25 |
| Bardejov | – | 1 | – | 1 | 1 | – | 1 | – | – | 1 |
| Humenné | 1 | 1 | – | 1 | 1 | – | 1 | 1 | 1 | 4 |
| Kežmarok | – | – | – | – | – | – | – | – | – | – |
| Levoča | – | 1 | – | 1 | 1 | – | 1 | – | – | 1 |
| Medzilaborce | – | – | – | – | – | – | – | – | – | – |
| Poprad | 1 | 8 | 1 | 9 | 9 | – | 9 | – | – | 10 |
| Prešov | – | – | – | – | – | – | – | – | – | – |
| Sabinov | – | – | – | – | – | – | – | – | – | – |
| Snina | – | – | – | – | – | – | – | – | – | – |
| Stará Ľubovňa | 2 | – | – | – | – | – | – | – | – | 2 |
| Stropkov | – | – | 1 | 1 | 1 | – | 1 | – | – | 1 |
| Svidník | 1 | – | – | – | – | – | – | – | – | 1 |
| Vranov nad Topľou | – | 5 | – | 5 | 5 | – | 5 | – | – | 5 |
| Košický kraj | 2 | 24 | 8 | 32 | 32 | – | 32 | 1 | 1 | 36 |
| Gelnica | – | 2 | 1 | 3 | 3 | – | 3 | – | – | 3 |
| Košice I | – | 4 | – | 4 | 4 | – | 4 | – | 1 | 5 |
| Košice II | – | – | – | – | – | – | – | – | – | – |
| Košice III | – | 1 | – | 1 | 1 | – | 1 | – | – | 1 |
| Košice IV | – | 1 | – | 1 | 1 | – | 1 | – | – | 1 |
| Košice-okolie | – | 4 | – | 4 | 4 | – | 4 | – | – | 4 |
| Michalovce | – | 3 | – | 3 | 3 | – | 3 | – | – | 3 |
| Rožňava | – | 3 | 1 | 4 | 4 | – | 4 | – | – | 4 |
| Sobrance | – | – | – | – | – | – | – | – | – | – |
| Spišská Nová Ves | 1 | 1 | 2 | 3 | 3 | – | 3 | – | – | 4 |
| Trebišov | 1 | 5 | 4 | 9 | 9 | – | 9 | 1 | – | 11 |

POTRATY PODĽA DRUHU A ÚZEMIA ZDRAVOTNÍCKEHO ZARIADENIA
ABORTIONS ACCORDING TO THE TYPE AND TERRITORY OF HEALTH FACILITY

Tabuľka 20

| Územie zdravotníckeho zariadenia Health facility territory | Spontánne potraty Spontaneous abortions | Umelé prerušenie tehotenstva Induced abortion | | | | | UPT spolu IA total | Iné potraty Other abortions | Mimo-maternicové tehotenstvá Extrauterine pregnancies | Potraty spolu Abortions total |
|---|--|--|--|--|---|--|-----------------------|--------------------------------|--|----------------------------------|
| | | legálne do 8. týždňa legal till eighth week | legálne od 9. do 12. týždňa legal since ninth till twelfth week | spolu do 12. týždňa till twelfth week total | z toho zo zdravotných dôvodov of which due to health reasons | legálne od 13. do 24. týždňa legal since thirteenth till twenty fourth week | | | | |

Spolu / Total

| Slovenská republika | 4 827 | 8 364 | 3 458 | 11 822 | 1 841 | 162 | 11 984 | 1 896 | 380 | 19 087 |
|----------------------------|--------------|--------------|--------------|---------------|--------------|------------|---------------|--------------|------------|---------------|
| Bratislavský kraj | 723 | 1 206 | 467 | 1 673 | 182 | 36 | 1 709 | 144 | 37 | 2 613 |
| Trnavský kraj | 368 | 1 034 | 454 | 1 488 | 169 | 11 | 1 499 | 201 | 27 | 2 095 |
| Trenčiansky kraj | 376 | 770 | 329 | 1 099 | 145 | 19 | 1 118 | 332 | 43 | 1 869 |
| Nitriansky kraj | 521 | 919 | 361 | 1 280 | 299 | 10 | 1 290 | 184 | 49 | 2 044 |
| Žilinský kraj | 590 | 782 | 435 | 1 217 | 193 | 19 | 1 236 | 193 | 65 | 2 084 |
| Banskobystrický kraj | 599 | 1 210 | 505 | 1 715 | 346 | 26 | 1 741 | 158 | 61 | 2 559 |
| Prešovský kraj | 842 | 688 | 300 | 988 | 172 | 16 | 1 004 | 354 | 42 | 2 242 |
| Košický kraj | 808 | 1 755 | 607 | 2 362 | 335 | 25 | 2 387 | 330 | 56 | 3 581 |

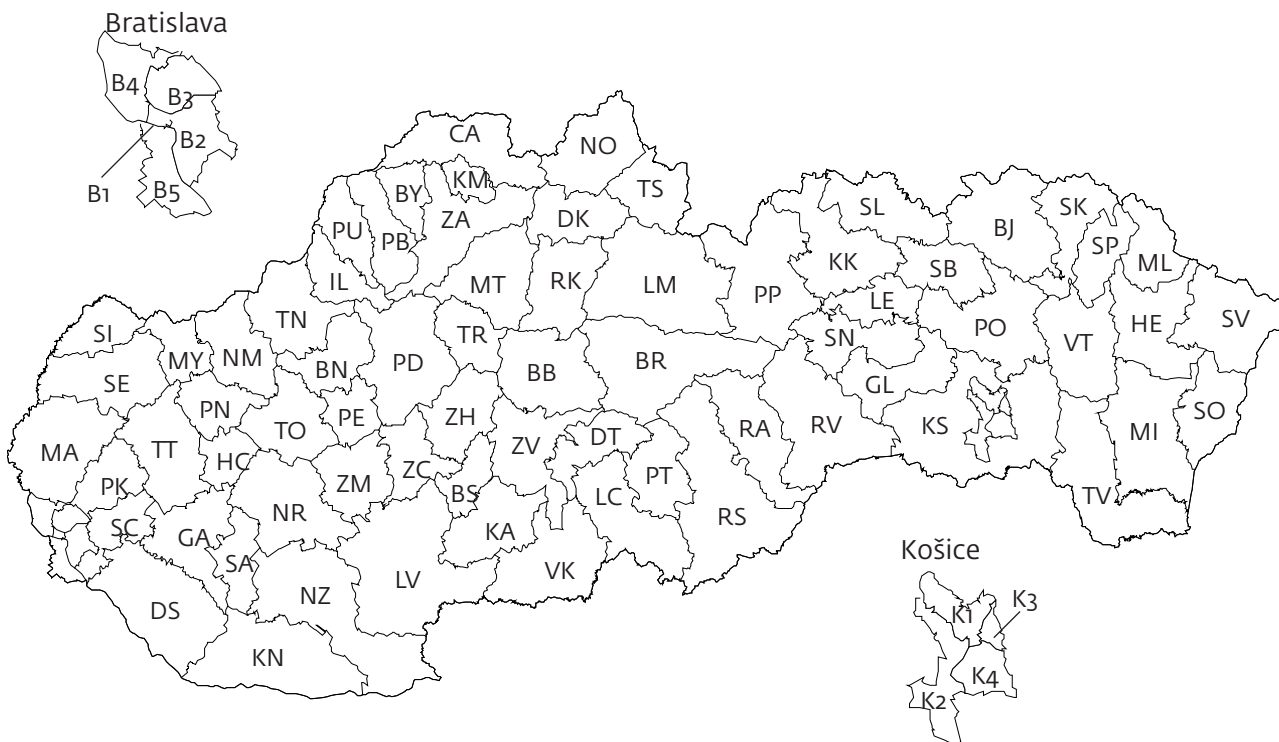
Tuzemky / Residents

| Slovenská republika | 4 811 | 8 356 | 3 453 | 11 809 | 1 841 | 162 | 11 971 | 1 894 | 378 | 19 054 |
|----------------------------|--------------|--------------|--------------|---------------|--------------|------------|---------------|--------------|------------|---------------|
| Bratislavský kraj | 720 | 1 206 | 467 | 1 673 | 182 | 36 | 1 709 | 143 | 37 | 2 609 |
| Trnavský kraj | 366 | 1 032 | 451 | 1 483 | 169 | 11 | 1 494 | 201 | 26 | 2 087 |
| Trenčiansky kraj | 374 | 770 | 328 | 1 098 | 145 | 19 | 1 117 | 332 | 43 | 1 866 |
| Nitriansky kraj | 521 | 919 | 361 | 1 280 | 299 | 10 | 1 290 | 184 | 48 | 2 043 |
| Žilinský kraj | 586 | 780 | 435 | 1 215 | 193 | 19 | 1 234 | 193 | 65 | 2 078 |
| Banskobystrický kraj | 595 | 1 209 | 505 | 1 714 | 346 | 26 | 1 740 | 158 | 61 | 2 554 |
| Prešovský kraj | 841 | 687 | 300 | 987 | 172 | 16 | 1 003 | 354 | 42 | 2 240 |
| Košický kraj | 808 | 1 753 | 606 | 2 359 | 335 | 25 | 2 384 | 329 | 56 | 3 577 |

Cudzinky / Foreigners

| Slovenská republika | 16 | 8 | 5 | 13 | – | – | 13 | 2 | 2 | 33 |
|----------------------------|-----------|----------|----------|-----------|----------|----------|-----------|----------|----------|-----------|
| Bratislavský kraj | 3 | – | – | – | – | – | – | 1 | – | 4 |
| Trnavský kraj | 2 | 2 | 3 | 5 | – | – | 5 | – | 1 | 8 |
| Trenčiansky kraj | 2 | – | 1 | 1 | – | – | 1 | – | – | 3 |
| Nitriansky kraj | – | – | – | – | – | – | – | – | 1 | 1 |
| Žilinský kraj | 4 | 2 | – | 2 | – | – | 2 | – | – | 6 |
| Banskobystrický kraj | 4 | 1 | – | 1 | – | – | 1 | – | – | 5 |
| Prešovský kraj | 1 | 1 | – | 1 | – | – | 1 | – | – | 2 |
| Košický kraj | – | 2 | 1 | 3 | – | – | 3 | 1 | – | 4 |

SLOVENSKÁ REPUBLIKA – OKRESY
THE SLOVAK REPUBLIC – DISTRICTS



| | | | | | |
|----------------------------|----|-------------------------|----|------------------------|----|
| Bratislava I | B1 | Šaľa | SA | Humenné..... | HE |
| Bratislava II | B2 | Topoľčany | TO | Kežmarok..... | KK |
| Bratislava III | B3 | Zlaté Moravce | ZM | Levoča | LE |
| Bratislava IV | B4 | Bytča | BY | Medzilaborce | ML |
| Bratislava V | B5 | Čadca | CA | Poprad | PP |
| Malacky | MA | Dolný Kubín | DK | Prešov..... | PO |
| Pezinok..... | PK | Kysucké Nové Mesto..... | KM | Sabinov..... | SB |
| Senec..... | SC | Liptovský Mikuláš..... | LM | Snina | SN |
| Dunajská Streda | DS | Martin | MT | Stará Ľubovňa | SL |
| Galanta..... | GA | Námestovo | NO | Stropkov | SP |
| Hlohovec | HC | Ružomberok | RK | Svidník..... | SK |
| Piešťany | PN | Turčianske Teplice..... | TR | Vranov nad Topľou..... | VT |
| Senica | SE | Tvrdošín | TS | Gelnica | GL |
| Skalica | SI | Žilina | ZA | Košice I | K1 |
| Trnava | TT | Banská Bystrica | BB | Košice II | K2 |
| Bánovce nad Bebravou | BN | Banská Štiavnica | BS | Košice III | K3 |
| Ilava..... | IL | Brezno | BR | Košice IV | K4 |
| Myjava..... | MY | Detva..... | DT | Košice-okolie..... | KS |
| Nové Mesto nad Váhom..... | NM | Krupina..... | KA | Michalovce..... | MI |
| Partizánske | PE | Lučenec | LC | Rožňava..... | RV |
| Považská Bystrica | PB | Poltár | PT | Sobrance..... | SO |
| Prievidza | PD | Revúca..... | RA | Spišská Nová Ves | SN |
| Púchov..... | PU | Rimavská Sobota..... | RS | Trebišov | TV |
| Trenčín..... | TN | Veľký Krtíš..... | VK | | |
| Komárno..... | KN | Zvolen..... | ZV | | |
| Levice | LV | Žarnovica | ZC | | |
| Nitra | NR | Žiar nad Hronom | ZH | | |
| Nové Zámky | NZ | Bardejov | BJ | | |