

EDÍCIA ZDRAVOTNÍCKA ŠTATISTIKA

Štatistika hospitalizovaných v SR 2005

Statistics of Inpatients
in SR 2005

Ročník 2006
ZŠ-25/2006

Content

Introduction.....	9
Age structure of population of Slovak Republic to 1. July 2005 (graph).....	11
1. Demographical data	
Number of population according to sex and territories of permanent residence till 1. July 2005.....	12
Age structure of population of Slovak Republic according to sex and five-yearly age groups till 1. July 2005.....	14
Age structure of population of Slovak Republic according to sex and ten-yearly age groups till 1. July 2005.....	14
2. Number of beds	
Development of bed number in health care facilities in 1995 – 2005.....	15
Development of occupancy of beds in years 1995 – 2005 (graph).....	15
Bed number in health care facilities split by wards.....	16
Utilization of beds in health care facilities split by wards (graph).....	18
Bed number in health care facilities per 1 000 inhabitants (map).....	20
3. Statistics of inpatients	
Development of inpatients in health care facilities split by sex in 1995 – 2005.....	21
Age structure of inpatients in health care facilities.....	21
Inpatients in health care facilities split by cause of hospitalization.....	22
Inpatients in health care facilities split by wards.....	24
Inpatients in health care facilities split by cause of hospitalization and age groups (graph).....	26
Most frequent causes of hospitalization in health care facilities.....	27
Most frequent causes of hospitalization in health care facilities with highest number of deceased out of the number of inpatients.....	28
Number of inpatients in health care facilities (graph).....	29
Number of deceased in health care facilities (graph).....	29

<i>Most frequent causes of hospitalization in health care facilities with highest number of care days</i>	<i>30</i>
<i>Inpatients in health care facilities split by age groups and sex.....</i>	<i>31</i>
<i>Selected statistical data on inpatients from the Bed Fund</i>	<i>32</i>
<i>Development of inpatients in health care facilities split by selected causes of hospitalization in 1995 – 2005.....</i>	<i>34</i>
<i>Development in hospitalization rate according to selected group of diseases (graph).....</i>	<i>34</i>
<i>Development in hospitalization rate of men according to selected group of diseases (graph).....</i>	<i>35</i>
<i>Development in hospitalization rate of women according to selected group of diseases (graph).....</i>	<i>35</i>

4. Causes of death

<i>The most frequent causes of death according to territories of permanent residence for 2005.....</i>	<i>36</i>
<i>Mortality on circulatory system diseases (map)</i>	<i>40</i>
<i>Mortality on tumours (map).....</i>	<i>40</i>
<i>Mortality on respiratory system diseases (map).....</i>	<i>41</i>
<i>Mortality on external causes morbidity and mortality (map)</i>	<i>41</i>
<i>Mortality on digestive system diseases (map).....</i>	<i>42</i>
<i>Verbal expression of chapters and diagnoses according to ICD-10.....</i>	<i>43</i>
<i>Districts of Slovak Republic (map)</i>	<i>45</i>

Introduction

Since 2000 the National Health Information Centre provides collection and processing of data not only for the Ministry of Health but also for Interior Ministry, Ministry of Transportation, Posts, and Telecommunication, Ministry of Justice, and Ministry of Defence of SR.

The publication *Statistics of Inpatients* contains total data for Slovak Republic, and each counties and districts.

The base for processing of statistical data is the Record about hospitalization. The information is processed for all bed wards of hospitals, maternity hospitals, and specialized cure institutes, including extraindustrial bed facilities. The published data of counties and districts are adopted from the Bed Fund of Hospitals.

One case of hospitalization in this publication is considered as closing of hospitalization in one ward, regardless if finished by discharge, decease, or transfer to another ward. The file contains all hospitalized patients including foreigners and homeless. Total time of hospitalization is included in the nursing days, even if the admission took place already in the past year.

The patients are reported differently in the Bed Fund of Hospitals, where the admitted patients are monitored as well.

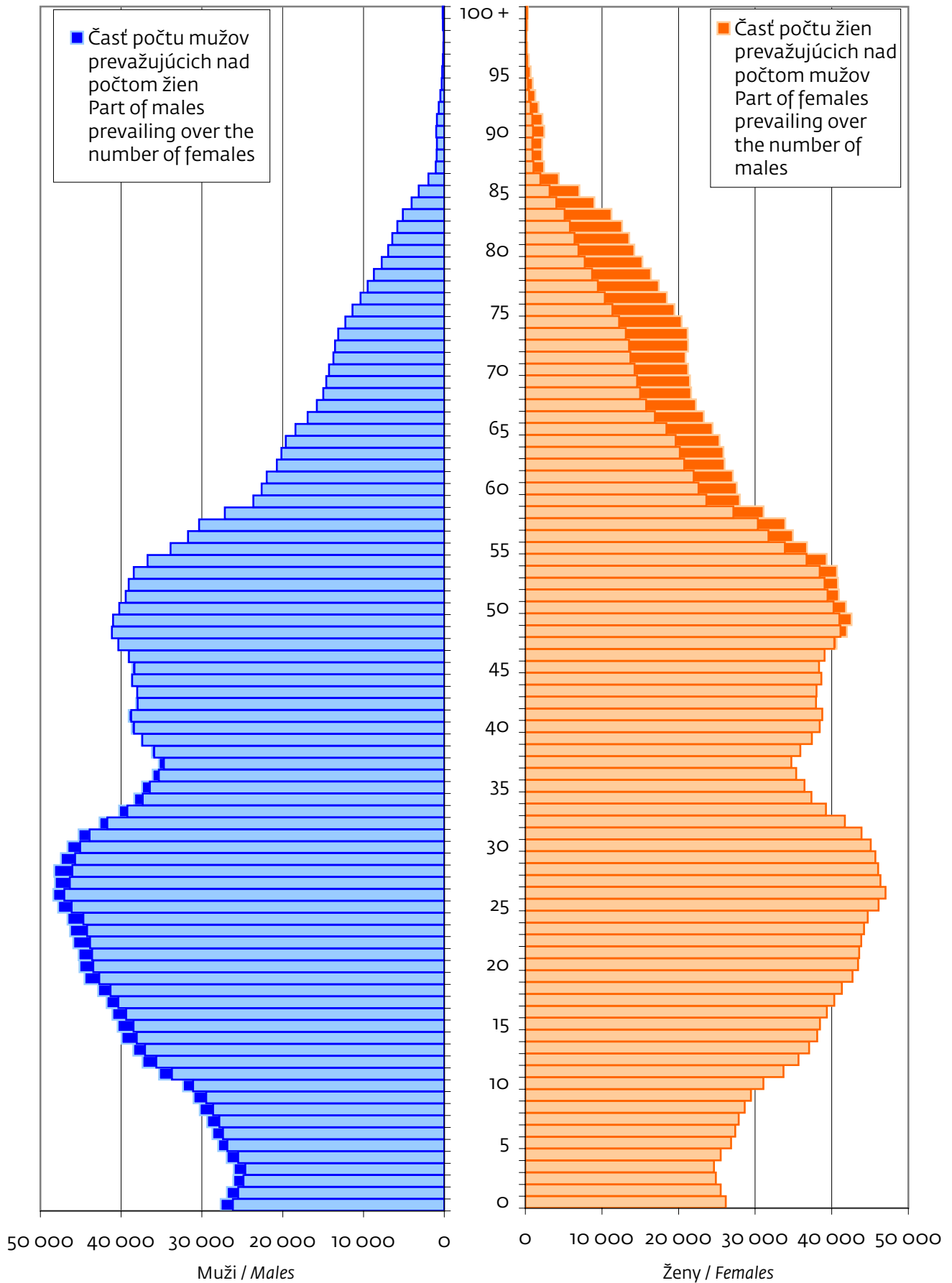
Statistical data are recalculated on age structure of the population in SR till 01. 07. 2005. Data of the bed fund is recalculated to the final status of population by the end of 2005.

The basical information and graphs offer a summarized overview about development of population, number of beds, number of hospitalized patients, and about cases of death, which have mostly participated on the total mortality in SR.

VEKOVÁ ŠTRUKTÚRA OBYVATEĽSTVA SLOVENSKEJ REPUBLIKY K 1. 7. 2005

AGE STRUCTURE OF POPULATION OF SLOVAK REPUBLIC TO 1. JULY 2005

Graf 1



2. POČET POSTELÍ

2. NUMBER OF BEDS

(ÚDAJE SÚ PREVZATÉ Z POSTELOVÉHO FONDU NEMOCNÍC)

(DATA ARE ADOPTED FROM THE BED FUND OF HOSPITALS)

VÝVOJ POČTU POSTELÍ V ZDRAVOTNÍCKYCH ZARIADENIACH V ROKOCH 1995 – 2005

DEVELOPMENT OF BED NUMBER IN HEALTH CARE FACILITIES IN 1995 – 2005

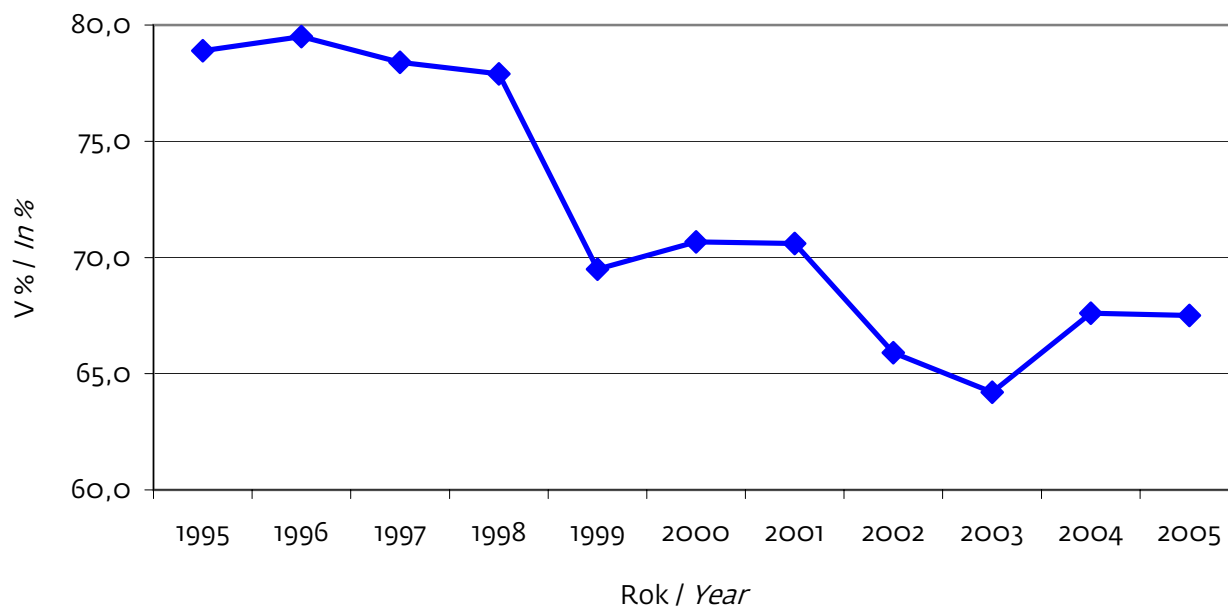
Tabuľka 3

Rok Year	Postele / Beds			
	počet number	počet na 1 lekárske miesto number per 1 physician post	počet na 1 000 obyvateľov number per 1 000 population	využitie v % bed occupancy in %
1995	38 139	7,5	7,1	78,9
1996	38 038	7,5	7,5	79,5
1997	36 801	6,8	7,3	78,4
1998	35 999	6,5	6,7	77,9
1999	35 709	6,4	6,6	69,5
2000	34 903	6,2	6,5	70,7
2001	33 974	6,1	6,3	70,6
2002	33 806	6,3	6,3	65,9
2003	32 722	6,4	6,1	64,2
2004	31 096	6,3	5,8	67,6
2005	37 131	7,4	6,9	67,5

VÝVOJ VYUŽITIA POSTELÍ V ROKOCH 1995 – 2005

DEVELOPMENT OF OCCUPANCY OF BEDS IN YEARS 1995 – 2005

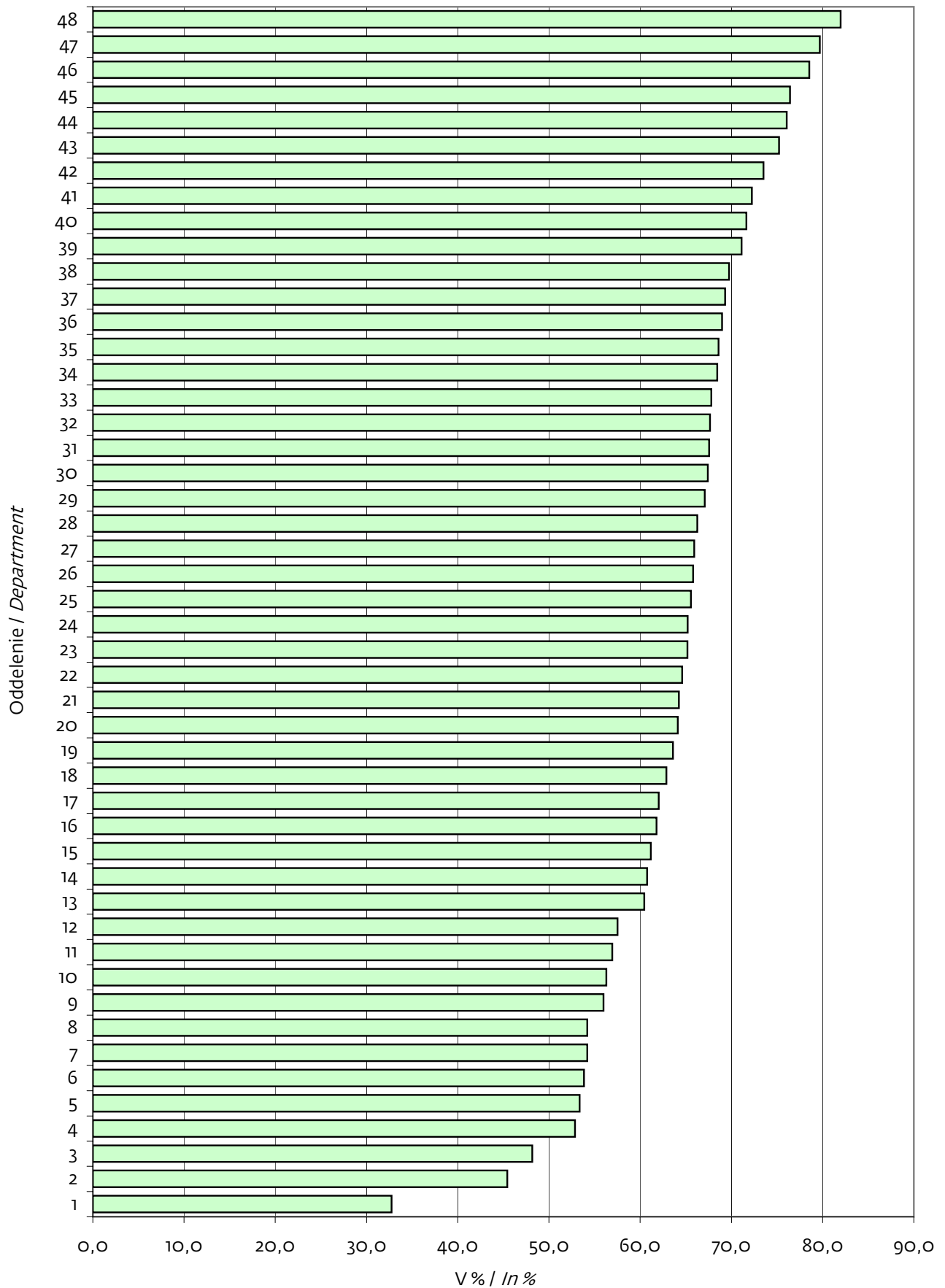
Graf 2



VYUŽITIE POSTELÍ V ZDRAVOTNÍCKYCH ZARIADENIACH PODĽA JEDNOTLIVÝCH ODDELENÍ

UTILIZATION OF BEDS IN HEALTH CARE FACILITIES SPLIT BY WARDS

Graf 3

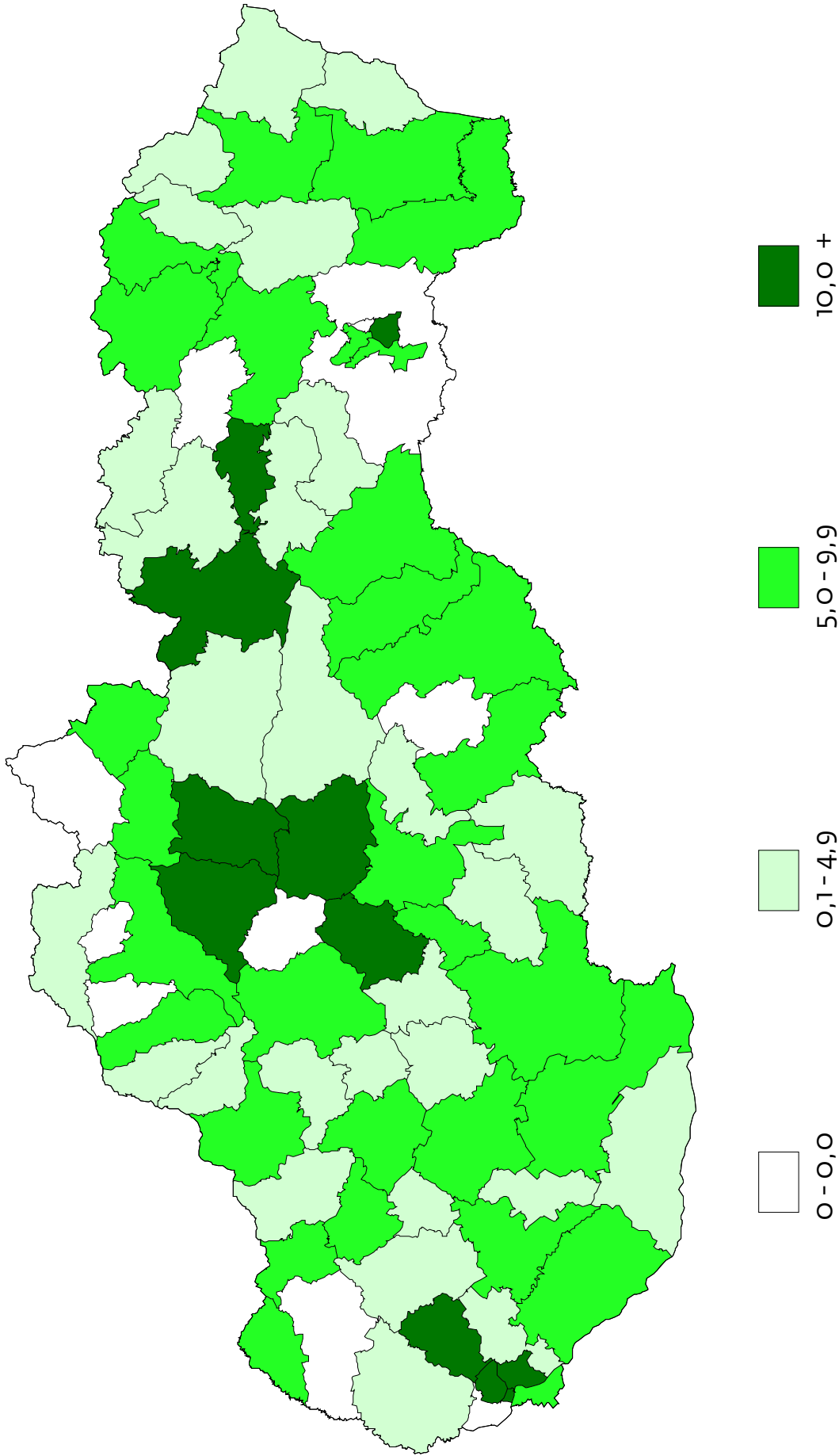


Statistics of Inpatients in SR 2005

1	Centrálny príjem	Central admittance
2	Transplantačné	For doing transplants
3	Paliatívna medicína	Palliative care
4	Infektológia	Infectology
5	Anestéziológia a intenzívna medicína	Anaesthesiology and intensive medicine
6	Nefrológia	Neonatology
7	Maxilofaciálna chirurgia	Maxillofacial surgery
8	Pneumológia a ftizeológia	Pneumology and phthisiology
9	Cievna chirurgia	Surgery of vessels
10	Kardiochirurgia	Cardiosurgery
11	Oftalmológia	Ophthalmology
12	Otorinolaryngológia	Otorhinolaryngology
13	Popáleninové	Burn department
14	Dermatovenerológia	Dermatovenerology
15	Doliečovacie	Department of after treatment
16	Dlhodobo chorých	Of long-range patients
17	Urológia	Urology
18	Plastická chirurgia	Plastic surgery
19	Klinické pracovné lekárstvo a klinická toxikológia	Clinical occupational medicine and clinical toxicology
20	Chirurgia	Surgery
21	Gerontopsychiatria	Gastroenterology
22	Jednotky intenzívnej starostlivosti	Intensive care units
23	Kardiológia	Cardiology
24	Novorodenecké postele	Newbornal beds
25	Pediatrica	Paediatric
26	Diabetológia, poruchy látkovej premeny a výživy	Diabetology, nutritional disorders
27	Ortopedická protetika	Orthopaedic prosthetics
28	Hrudníková chirurgia	Thorax surgery
29	Foniatria	Phoniatory
30	Ošetrovateľské	Attendance
31	Endokrinológia	Endocrinology
32	Gynekológia a pôrodnictvo	Gynaecology and obstetrics
33	Ortopédia	Orthopaedics
34	Nukleárna medicína	Nuclear medicine
35	Fyziatria, balneológia a liečebná rehabilitácia	Physiotherapy, balneology and medical rehabilitation
36	Geriatrica	Geriatrics
37	Klinická onkológia	Clinical oncology
38	Neonatológia	Neonatology
39	Gastroenterológia	Gastroenterology
40	Úrazová chirurgia	Traumatology
41	Klinická hematológia	Clinical haematology
42	Neurochirurgia	Neurosurgery
43	Medicína drogových závislostí	Medicine of drug addiction
44	Neurológia	Neurology
45	Vnútorne lekárstvo	Internal medicine
46	Psychiatria	Psychiatry
47	Radiačná onkológia	Radiation oncology
48	Reumatológia	Rheumatology

Mapa 1

POČET POSTELÍ V ZDRAVOTNÍCKYCH ZARIADENIACH NA 1 000 OBYVATEĽOV
BED NUMBER IN HEALTH CARE FACILITIES PER 1 000 INHABITANTS



Poznámka: Prepočet na 1 000 obyvateľov nezohľadňuje spádovosť nemocníc a okresov. Bielou farbou sú označené okresy, ktoré nemajú nemocnicu.
Note: Calculation per 1 000 population considers not the coming under of hospitals and districts. With a white color are marked districts, which have not a hospital.

3. ŠTATISTIKA HOSPITALIZOVANÝCH

3. STATISTICS OF INPATIENTS

VÝVOJ POČTU HOSPITALIZOVANÝCH V ZDRAVOTNÍCKYCH ZARIADENIACH PODĽA POHLAVIA V ROKOCH 1995 – 2005

DEVELOPMENT OF INPATIENTS IN HEALTH CARE FACILITIES SPLIT BY SEX IN 1995 – 2005

Tabuľka 5

Rok Year	Hospitalizovaní / Inpatients						Priemerný ošetrovací čas v dňoch Average length of stay in days
	počet number			na 100 000 obyvateľov per 100 000 population			
	spolu total	muži males	ženy females	spolu total	muži males	ženy females	
1995	1 028 871	430 214	598 657	19 182,2	16 469,2	21 757,9	11,5
1996	1 055 757	443 941	611 816	19 683,5	16 994,7	22 236,2	11,3
1997	1 090 672	460 046	630 626	20 260,6	17 556,5	22 825,2	11,2
1998	1 109 210	469 662	639 548	20 604,9	17 923,8	23 147,7	10,1
1999	1 059 533	450 868	608 665	19 638,0	17 182,0	21 963,6	9,1
2000	1 063 611	453 430	610 181	19 694,0	17 269,0	21 988,6	8,9
2001	1 088 180	468 477	619 703	20 227,2	17 930,9	22 395,4	8,6
2002	1 040 153	444 564	595 589	19 334,5	17 015,6	21 524,0	8,3
2003	1 010 805	429 759	581 046	18 792,3	16 460,7	20 991,6	8,1
2004	1 020 587	433 685	586 902	18 962,3	16 603,0	21 187,2	7,9
2005	1 070 268	456 447	613 821	19 866,6	17 455,5	22 140,6	8,3

VEKOVÁ ŠTRUKTÚRA HOSPITALIZOVANÝCH V ZDRAVOTNÍCKYCH ZARIADENIACH

AGE STRUCTURE OF INPATIENTS IN HEALTH CARE FACILITIES

Tabuľka 6

Veková skupina Age group	Spolu / Total		Muži / Males		Ženy / Females	
	počet / number	%	počet / number	%	počet / number	%
0 – 14	168 574	15,8	92 740	20,3	75 834	12,4
15 – 54	467 186	43,7	168 222	36,9	298 964	48,7
55 +	434 508	40,6	195 485	42,8	239 023	38,9

HOSPITALIZOVANÍ V ZDRAVOTNÍCKYCH ZARIADENIACH PODĽA PRÍČIN HOSPITALIZÁCIE

INPATIENTS IN HEALTH CARE FACILITIES SPLIT BY CAUSE OF HOSPITALIZATION

Tabuľka 7
1/2

Základné ochorenie podľa MKCH-10	Hospitalizovaní / Inpatients			Zomretí / Deaths		
	počet number	%	na 100 000 obyvateľov per 100 000 population	počet number	na 1 000 hospitalizovaných per 1 000 inpatients	na 100 000 obyvateľov per 100 000 population
Spolu	1 070 268	100,0	19 866,6	26 895	25,1	499,2
I.	21 725	2,0	403,3	363	16,7	6,7
II.	95 034	8,9	1 764,0	5 590	58,8	103,8
III.	8 345	0,8	154,9	198	23,7	3,7
IV.	21 463	2,0	398,4	1 022	47,6	19,0
V.	39 650	3,7	736,0	394	9,9	7,3
VI.	33 303	3,1	618,2	313	9,4	5,8
VII.	22 619	2,1	419,9	3	0,1	0,1
VIII.	9 970	0,9	185,1	2	0,2	0,0
IX.	164 540	15,4	3 054,2	9 963	60,6	184,9
X.	89 446	8,4	1 660,3	2 643	29,6	49,1
XI.	101 758	9,5	1 888,9	2 420	23,8	44,9
XII.	16 714	1,6	310,3	207	12,4	3,8
XIII.	56 176	5,3	1 042,8	104	1,9	1,9
XIV.	65 313	6,1	1 212,4	493	7,6	9,2
XV.	87 857	8,2	1 630,8	1	0,0	0,0
XVI.	17 671	1,7	328,0	165	9,3	3,1
XVII.	8 294	0,8	154,0	88	10,6	1,6
XVIII.	30 424	2,8	564,7	1 449	47,6	26,9
XIX.	85 447	8,0	1 586,1	1 365	16,0	25,3
XX.	3 361	0,3	62,4	54	16,1	1,0
XXI.	91 158	8,5	1 692,1	58	0,6	1,1

HOSPITALIZOVANÍ V ZDRAVOTNÍCKYCH ZARIADENIACH PODĽA PRÍČÍN HOSPITALIZÁCIE

INPATIENTS IN HEALTH CARE FACILITIES SPLIT BY CAUSE OF HOSPITALIZATION

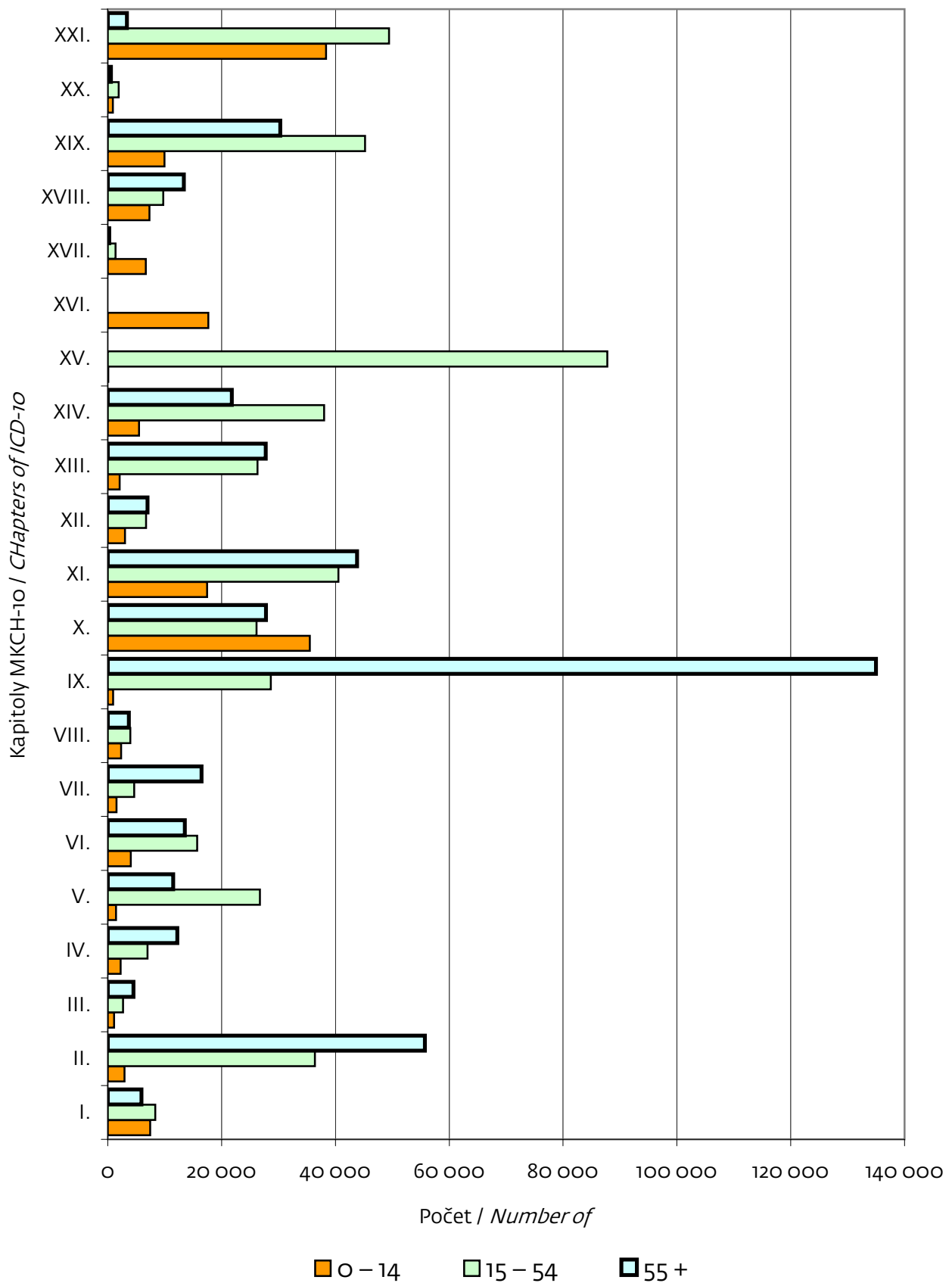
Tabuľka 7
2/2

Basic diagnosis ICD-10	Ošetrovacie dni / Treatment days			Dĺžka ošetrovacieho času / Length of stay		
	počet number	%	na 1 000 obyvateľov per 1 000 population	priemerný ošetrovací čas v dňoch average length of stay in days	modus	medián
Total	8 878 233	100,0	1 648,0	8,3	1	4
I.	200 486	2,3	37,2	9,2	x	6
II.	863 921	9,7	160,4	9,1	2	7
III.	69 902	0,8	13,0	8,4	4	7
IV.	195 000	2,2	36,2	9,1	7	7
V.	1 253 460	14,1	232,7	31,6	21	21
VI.	287 524	3,2	53,4	8,6	8	7
VII.	99 686	1,1	18,5	4,4	2	3
VIII.	61 539	0,7	11,4	6,2	7	6
IX.	1 475 049	16,6	273,8	9,0	7	7
X.	736 658	8,3	136,7	8,2	2	6
XI.	660 054	7,4	122,5	6,5	3	5
XII.	155 494	1,8	28,9	9,3	3	7
XIII.	536 246	6,0	99,5	9,6	9	9
XIV.	304 258	3,4	56,5	4,7	2	3
XV.	511 994	5,8	95,0	5,8	5	5
XVI.	156 918	1,8	29,1	8,9	5	6
XVII.	48 370	0,5	9,0	5,8	2	4
XVIII.	198 186	2,2	36,8	6,5	2	4
XIX.	607 859	6,9	112,8	7,1	2	4
XX.	13 767	0,2	2,6	4,1	2	2
XXI.	441 862	5,0	82,0	4,9	4	4

HOSPITALIZOVANÍ V ZDRAVOTNÍCKYCH ZARIADENIACH PODĽA PRÍČIN HOSPITALIZÁCIE A VEKOVÝCH SKUPÍN

INPATIENTS IN HEALTH CARE FACILITIES SPLIT BY CAUSE OF HOSPITALIZATION AND AGE GROUPS

Graf 4



NAJČASTEJŠIE PRÍČINY HOSPITALIZÁCIE V ZDRAVOTNÍCKYCH ZARIADENIACH

MOST FREQUENT CAUSES OF HOSPITALIZATION IN HEALTH CARE FACILITIES

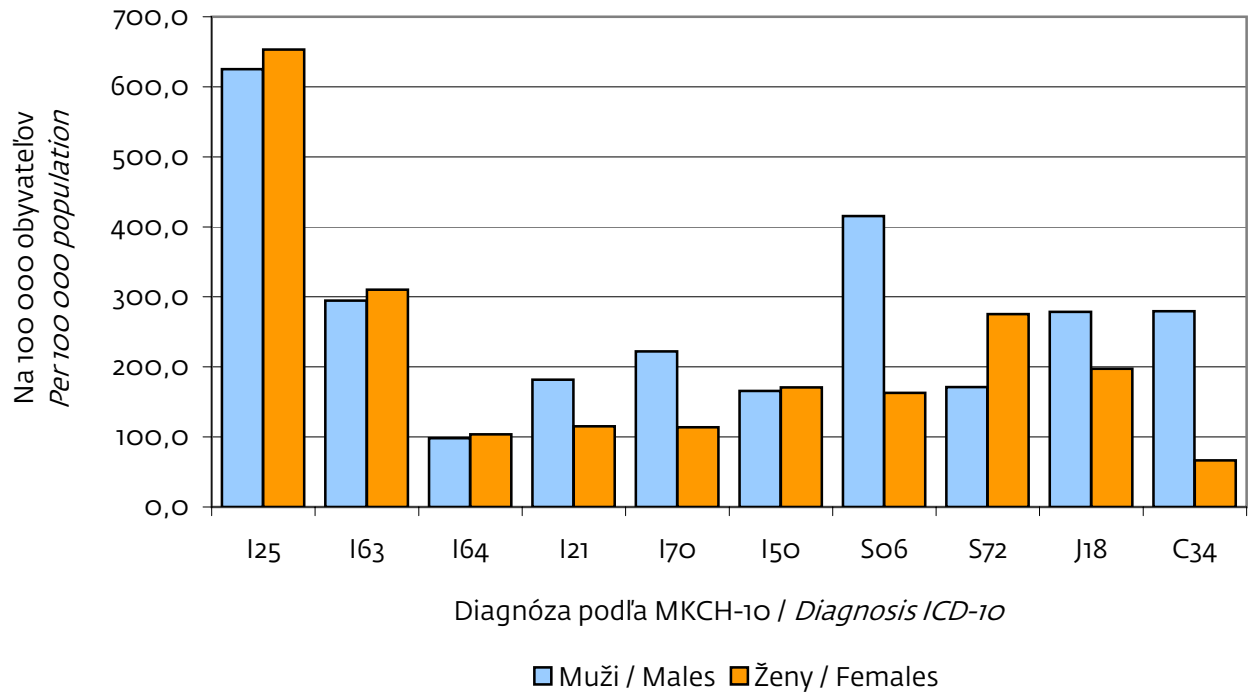
Tabuľka 9

Poradové číslo Number	Základné ochorenie podľa MKCH-10 Basic diagnosis ICD-10	Hospitalizovaní Inpatients				Zomretí Deaths	
		počet number			%	počet number	na 1 000 hospitalizovaných per 1 000 inpatients
		spolu total	muži males	ženy females			
Spolu / Total Aoo – Z99		1 070 268	456 447	613 821	100,0	26 895	25,1
1.	Z76	43 912	1 923	41 989	4,1	–	–
2.	O80	38 773	–	38 773	3,6	–	–
3.	Z38	36 722	18 586	18 136	3,4	7	0,2
4.	I25	34 454	16 351	18 103	3,2	1 955	56,7
5.	I63	16 308	7 707	8 601	1,5	1 729	106,0
6.	S06	15 375	10 861	4 514	1,4	414	26,9
7.	K80	15 103	4 412	10 691	1,4	78	5,2
8.	J35	14 910	7 246	7 664	1,4	–	–
9.	I10	14 312	4 670	9 642	1,3	84	5,9
10.	J18	12 767	7 289	5 478	1,2	982	76,9
11.	S72	12 111	4 477	7 634	1,1	524	43,3
12.	K30	11 161	4 702	6 459	1,0	256	22,9
13.	I20	10 924	5 723	5 201	1,0	114	10,4
14.	M54	10 767	3 778	6 989	1,0	24	2,2
15.	K40	10 423	8 913	1 510	1,0	20	1,9
16.	F10	9 981	7 811	2 170	0,9	43	4,3
17.	M51	9 964	4 651	5 313	0,9	6	0,6
18.	I48	9 514	4 422	5 092	0,9	138	14,5
19.	J45	9 273	3 487	5 786	0,9	19	2,1
20.	C34	9 156	7 308	1 848	0,9	1 008	110,1
21.	I50	9 060	4 332	4 728	0,9	1 287	142,1
22.	I70	8 975	5 815	3 160	0,8	447	49,8
23.	H25	8 940	3 337	5 603	0,8	1	0,1
24.	S82	8 690	4 986	3 704	0,8	17	2,0
25.	O82	8 677	–	8 677	0,8	1	0,1
26.	J44	8 255	5 128	3 127	0,8	273	33,1
27.	I21	7 949	4 749	3 200	0,7	851	107,1
28.	J20	7 878	4 436	3 442	0,7	75	9,5
29.	K35	7 782	3 905	3 877	0,7	13	1,7
30.	O04	7 643	–	7 643	0,7	–	–
1. – 30. spolu / total		429 759	171 005	258 754	40,2	10 366	24,1
Ostatné príčiny Other causes		640 509	285 442	355 067	59,9	16 529	25,8

POČET HOSPITALIZOVANÝCH V ZDRAVOTNÍCKYCH ZARIADENIACH

NUMBER OF INPATIENTS IN HEALTH CARE FACILITIES

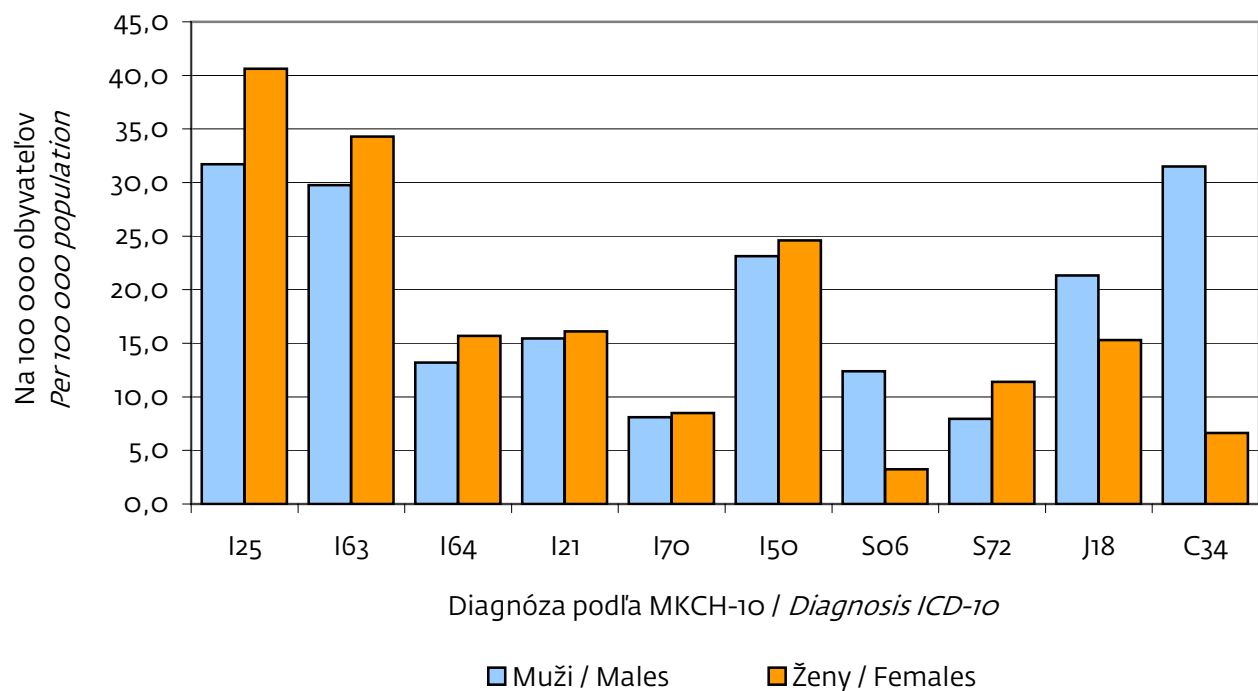
Graf 5



POČET ZOMRETÝCH V ZDRAVOTNÍCKYCH ZARIADENIACH

NUMBER OF DECEASED IN HEALTH CARE FACILITIES

Graf 6



VÝVOJ HOSPITALIZOVANÝCH V ZDRAVOTNÍCKYCH ZARIADENIACH PODĽA VYBRANÝCH PRÍČIN HOSPITALIZÁCIE A POHLAVIA V ROKOCH 2001 – 2005

DEVELOPMENT OF INPATIENTS IN HEALTH CARE FACILITIES SPLIT BY SELECTED CAUSES OF HOSPITALIZATION IN 1995 – 2005

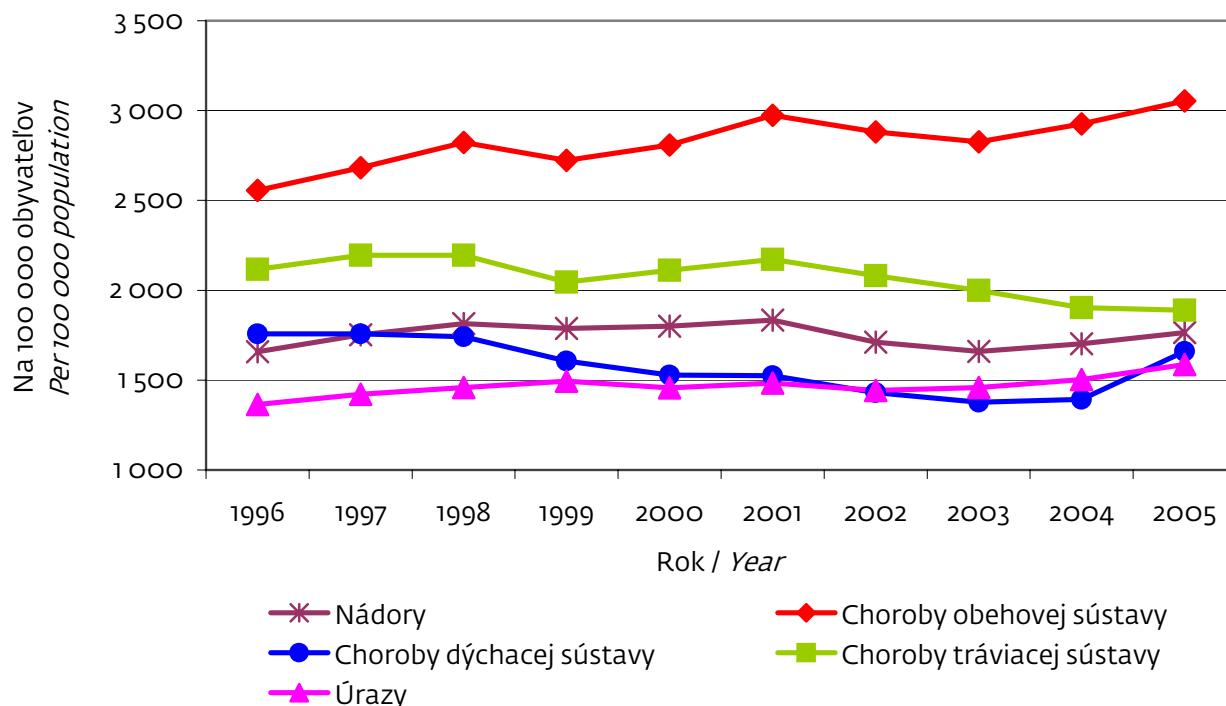
Tabuľka 14

Základné ochorenie podľa MKCH-10 Basic diagnosis ICD-10	Pohlavie Sex	Rok / Year				
		2001	2002	2003	2004	2005
II. kapitola II. chapter	spolu	98 701	92 022	89 227	91 624	95 034
	muži	44 706	42 008	40 205	41 999	44 033
	ženy	53 995	50 014	49 022	49 625	51 001
IX. kapitola IX. chapter	total	160 010	155 051	151 979	157 508	164 540
	males	78 514	75 562	74 094	77 122	79 478
	females	81 496	79 489	77 885	80 386	85 062
X. kapitola X. chapter	spolu	82 031	76 920	74 069	74 975	89 446
	muži	45 728	42 670	40 935	41 100	48 050
	ženy	36 303	34 250	33 134	33 875	41 396
XI. kapitola XI. chapter	total	116 831	111 965	107 526	102 432	101 758
	males	58 465	56 187	54 080	51 086	51 607
	females	58 366	55 778	53 446	51 346	50 151
XIX. kapitola XIX. chapter	spolu	79 794	77 646	78 482	80 938	85 447
	muži	51 707	49 449	49 734	50 766	52 751
	ženy	28 087	28 197	28 748	30 172	32 696

VÝVOJ HOSPITALIZOVANOSTI NA VYBRANÉ SKUPINY OCHORENÍ

DEVELOPMENT IN HOSPITALIZATION RATE ACCORDING TO SELECTED GROUP OF DISEASES

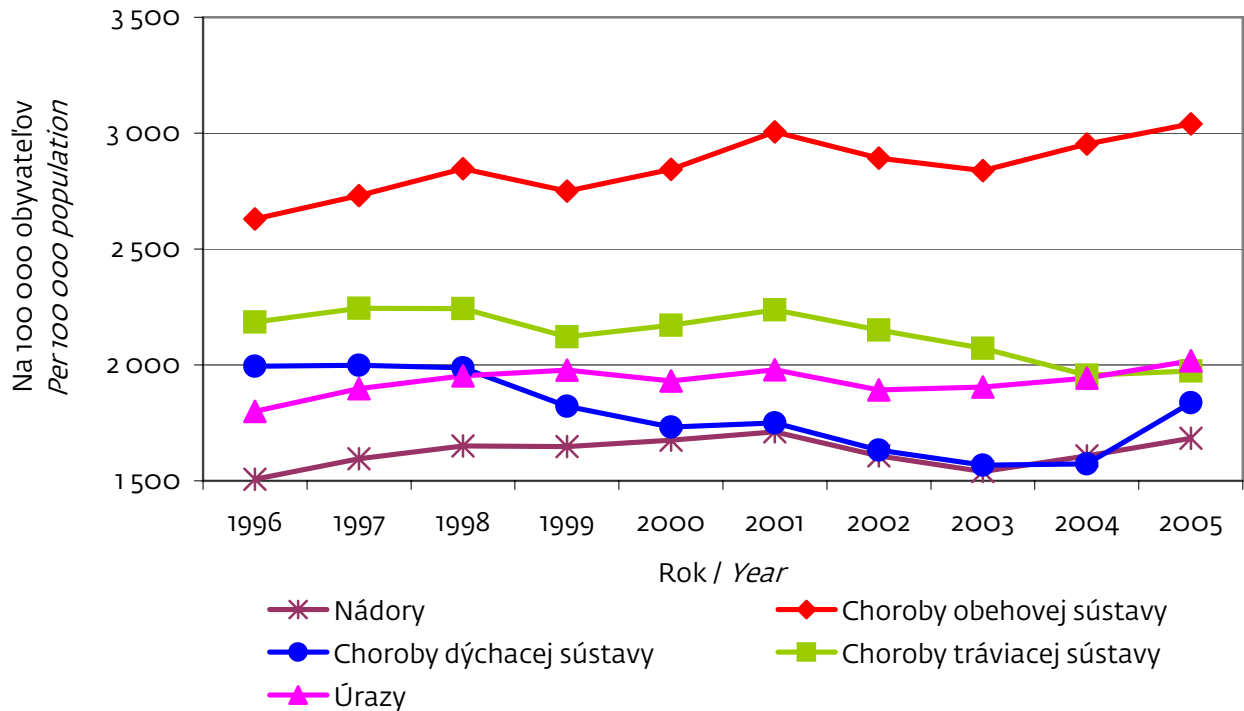
Graf 7



VÝVOJ HOSPITALIZOVANOSTI MUŽOV NA VYBRANÉ SKUPINY OCHORENÍ

DEVELOPMENT IN HOSPITALIZATION RATE OF MEN ACCORDING TO SELECTED GROUP OF DISEASES

Graf 8



VÝVOJ HOSPITALIZOVANOSTI ŽIEN NA VYBRANÉ SKUPINY OCHORENÍ

DEVELOPMENT IN HOSPITALIZATION RATE OF WOMEN ACCORDING TO SELECTED GROUP OF DISEASES

Graf 9

