

EDÍCIA ZDRAVOTNÍCKA ŠTATISTIKA

Vrodené chyby v SR 2005

Congenital defects
in SR 2005

Ročník 2006

ZŠ-3/2006

Content

Introduction.....	9
Development of number of live-born children with a congenital malformation on 10 000 live-born children in years 1990 – 2005 (graph)	11
Number of live-born children with a congenital malformation on 10 000 live-born children according to territory of permanent residence of the mother (graph).....	11
Development of number of live-born children with a congenital defect on 10 000 of live-born children according to a permanent residence of the mother in years 1996 – 2005	12
Reported congenital defects according to territories of permanent residence of the mother	14
Live-born children with a congenital malformation according to permanent residence of the mother (graph)	16
Number of reported congenital defects according to sex and quantity of a pregnancy of the mother	16
Number of born children with a congenital defect according to birth weight and territorial division of permanent residence of the mother	17
Live-born children with a congenital malformation on 10 000 live-born children according to age of the mother (graph).....	18
Number of legally inductings of a pregnancy from a reason of prenatally detected congenital defect of foetus according to weight of foetus and territorial division of permanent residence of the mother	18
Number of live-born children with a congenital defect according to birth weight and birth length.....	19
Reported congenital defects according to age of the mother and father.....	20
Number of live-born children with a congenital defect according to age of the mother and father.....	20
Average of live-born children with a congenital malformation on 10 000 live-born children in period 2000 – 2005 (map).....	21
Reported congenital defects according to age of the mother and territorial division of permanent residence of the mother	22
Number of live-born children with a congenital defect according to age of the mother and territorial division of permanent residence of the mother	24

Live-born children with a congenital defect according to age of the mother and territorial division of permanent residence of the mother on 10 000 of live-born children.....	26
Reported congenital defects according to marital status of the mother.....	28
Number of live-born children with a congenital defect according to weight and week of pregnancy.....	28
Structure of congenital malformations by live-born boys (graph).....	29
Structure of congenital malformations by live-born girls (graph).....	29
Number of reported congenital defects according to diagnoses of congenital defects and sex.....	30
Reported congenital defects according to diagnoses of congenital defects and birth weight (weight of foetus).....	32
Number of live-born children with a congenital defect according to diagnoses of congenital defects and birth weight.....	34
Reported congenital defects according to diagnoses of congenital defects and age of the mother.....	36
Number of live-born children with a congenital defect according to diagnoses of congenital defects and age of the mother.....	38
Live-born children with a congenital defect on 10 000 of live-born children according to diagnoses of congenital defects and age of the mother.....	40
Number of live-born children with a combined defect according to diagnoses of congenital defects and number of concurrently occurring further defects.....	42
Reported congenital defects according to selected diagnoses of congenital defects and a district of a permanent residence of the mother.....	44
Reported live-born children with a congenital defect on 10 000 of live-borns according to diagnoses.....	50
Number of born children with a congenital defect according to a prenatally detected congenital defect and selected diagnoses.....	52
Verbal expression of diagnoses (ICD-10).....	53
Codes of regions SR.....	55
Districts of Slovak Republic (map).....	56

Introduction

Hereby we submit the publication *Congenital Defects in SR 2005*, which is published in edition of *Health Statistics*. This publication was released for the first time in 1965 in cooperation with IHS Prague, which covered federal data divided in Czech and Slovak national data up to year 1992.

The basis for processing of statistical data contained in presented publication is the Report of Congenital Defects.

The obligation to report all groups of congenital defects results from valid legal norms. Collection of reports and processing for SR within the framework of State Information System (SIS) is performed by the Institute of Health Information and Statistics (IHS).

Reporting of congenital defects has started in year 1964 at live-born children. In the period of 1964 – 1976 we monitored 36 selected congenital defects, which were surely possible to detect at newborns. In 1976 the number of monitored congenital defects grew from 36 to 60. Based on requirements of WHO in 1991 the number of monitored congenital defects was enlarged by next 3 defects – thalassemia, phenylketonuria and cystic fibrosis. In 1994 the monitoring of congenital defects was completed to all congenital defects.

The obligatory reporting since 1994 is split in three groups of congenital defects (CD):

1. CD at live-born children,
2. CD at stillborn children,
3. Prenatally detected CD, which were reason to legally induced abortions (LIA).

The report of congenital defects is submitted by health care facility – newborn ward, respectively newborn section and gynaecological – obstetrical ward (if it is a legally induced abortion performed due to prenatally detected congenital defect).

The occurrence of congenital defects in population belongs to the most monitored indicators of health status of population. Several important factors in incidence of CD are reflecting genetic burdens, environmental changes, and level of health care. Therefore it is necessary to obtain the most accurate data about occurrence of CD in time sequence, as well as in territorial localization.

Data on reported CD are processed aggregated (in spreadsheets Reported CD), and also separately for each single group (live-born children, stillborn children, LIA after prenatally detected CD).

In 2005 1 422 congenital defects in total were reported in Slovak Republic, out of which 1 377 live-born children with CD, 12 stillborn children with CD and in 33 cases of prenatally detected CD followed by legally induced abortion (LIA).

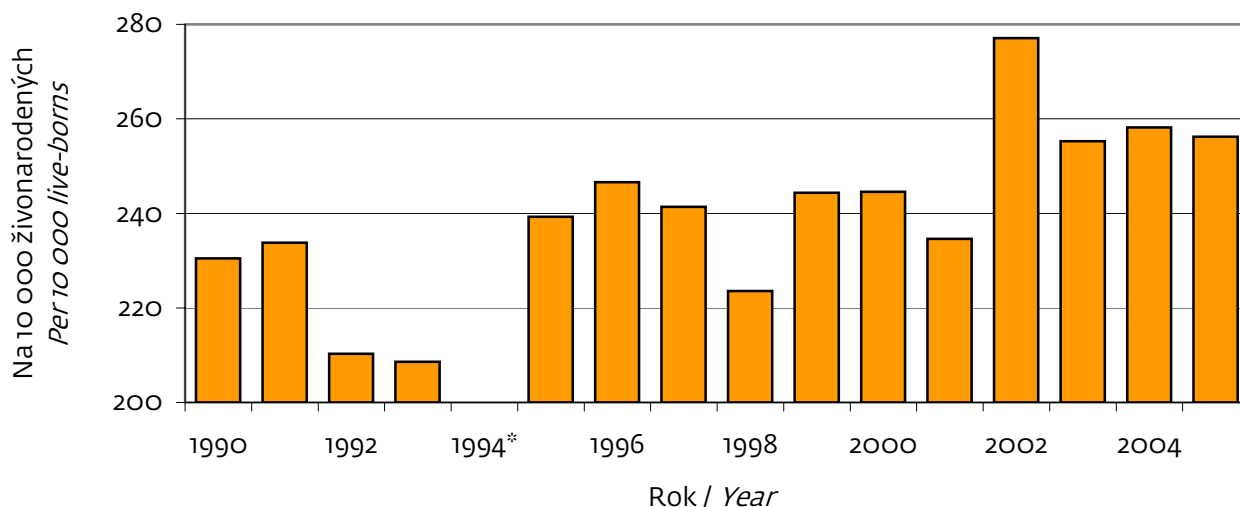
The basic longterm monitored indicator is the incidence of CD at live-born children. In 2005 there were 256,2 cases of CD out of 10 000 live-born children reported in SR. Compared with 2004 it represents an increase of 2.0 cases in 10 000 live-born children. The highest incidence of CD was observed in districts Levoča (572,8 in 10 000 live-born children), Stará Ľubovňa (535,2), Komárno (506,6). The lowest incidence of CD was in districts Zlaté Moravce (30,9 in 10 000 live-born children), Veľký Krtíš (68,2) and Bratislava I (77,5).

Mostly reported congenital defects were the combined defects, hypospadias and congenital malformations of cardiac septum.

VÝVOJ POČTU ŽIVONARODENÝCH DETÍ S VRODENOU CHYBOU NA 10 000 ŽIVONARODENÝCH DETÍ V ROKOCH 1990 – 2005

DEVELOPMENT OF NUMBER OF LIVE-BORN CHILDREN WITH A CONGENITAL MALFORMATION ON 10 000 LIVE-BORN CHILDREN IN YEARS 1990 – 2005

Graf 1



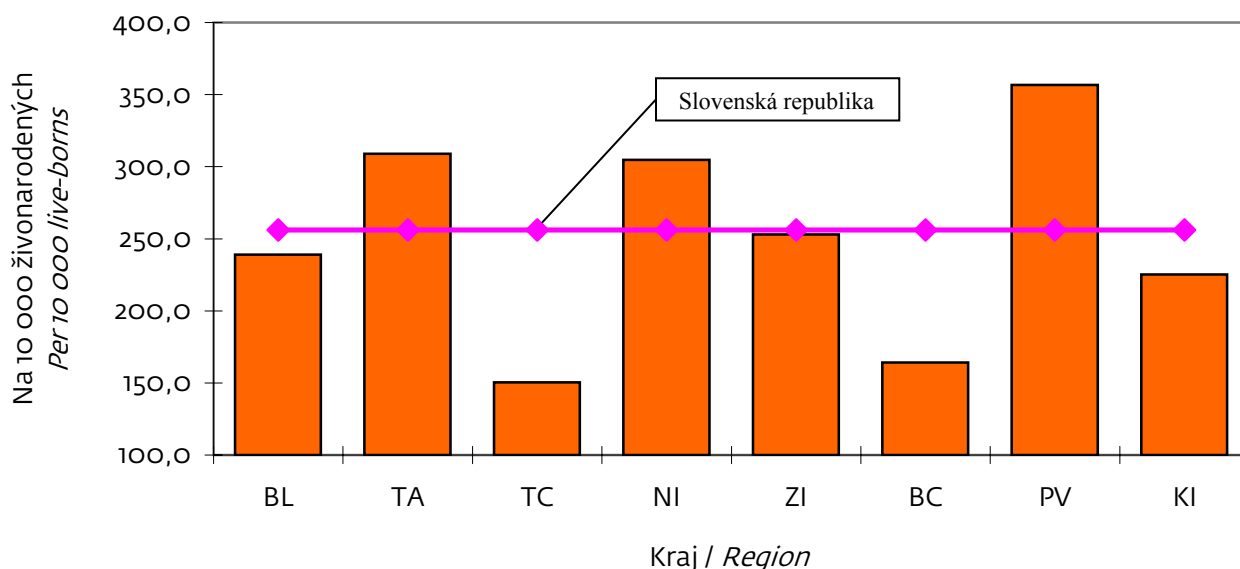
* Poznámka: V súlade s medzinárodným systémom registrácie VCH bol v SR od 1. 1. 1994 zavedený nový systém hlásenia VCH, ktorý mal vážne organizačné a administratívne problémy. Spravodajské jednotky včas nezareagovali na metodické pokyny ÚZIS-u. Údaj za rok 1994 je viac odrazom správnosti a dôslednosti spracovania hlásení v ÚZIS-i ako reálneho výskytu VCH.

* Notice: In unison with international system of registration CM was in SR since 1. 1. 1994 implemented a system of reporting of CM, which had serious organisational and administrative problems. Reporting units did not in time react on methodical instructions of IHIS. Data for year 1994 is more a reflection of correctness and consistency of processing of reports in IHIS-i than a real occurrence of CM

POČET ŽIVONARODENÝCH DETÍ S VRODENOU CHYBOU NA 10 000 ŽIVONARODENÝCH DETÍ PODĽA ÚZEMIA TRVALÉHO BYDLISKA MATKY

NUMBER OF LIVE-BORN CHILDREN WITH A CONGENITAL MALFORMATION ON 10 000 LIVE-BORN CHILDREN ACCORDING TO TERRITORY OF PERMANENT RESIDENCE OF THE MOTHER

Graf 2



VÝVOJ POČTU ŽIVONARODENÝCH DETÍ S VRODENOU CHYBOU NA 10 000 ŽIVONARODENÝCH DETÍ PODĽA ÚZEMIA TRVALÉHO BYDLISKA MATKY V ROKOCH 1996 – 2005

DEVELOPMENT OF NUMBER OF LIVE-BORN CHILDREN WITH A CONGENITAL DEFECT ON 10 000 OF LIVE-BORN CHILDREN ACCORDING TO A PERMANENT RESIDENCE OF THE MOTHER IN YEARS 1996 – 2005

Tabuľka 1

1/2

Územie	Rok									
	1996	1997	1998	1999	2000	2001	2002	2003	2004	2005
Slovenská republika	246,6	241,4	223,6	244,4	244,6	234,6	277,1	255,3	258,2	256,2
Bratislavský kraj	183,9	200,6	196,6	165,1	204,3	124,6	186,4	170,6	203,9	239,1
Bratislava I	185,2	219,8	137,4	91,2	221,0	165,7	217,4	142,5	227,9	77,5
Bratislava II	228,4	192,1	181,4	189,8	213,7	146,2	143,0	141,8	294,4	170,3
Bratislava III	176,1	297,9	148,9	108,9	171,3	64,2	192,7	269,7	207,5	223,9
Bratislava IV	119,6	186,0	127,9	240,8	176,1	70,4	129,9	165,2	177,9	321,8
Bratislava V	180,6	191,2	179,2	158,5	228,9	156,6	199,3	163,6	98,1	371,2
Malacky	178,0	215,6	248,8	169,8	220,3	101,7	203,3	262,3	245,9	208,6
Pezinok	259,7	187,3	337,1	85,1	267,9	67,0	188,7	57,9	154,4	281,4
Senec	158,7	139,2	255,2	188,2	131,3	240,7	305,3	173,4	250,5	142,9
Trnavský kraj	213,5	306,1	248,2	265,9	294,8	250,7	367,2	274,7	272,6	309,0
Dunajská Streda	135,2	213,3	168,9	209,9	105,6	191,9	146,1	254,8	169,9	361,3
Galanta	188,7	232,6	169,1	211,8	575,4	310,7	729,2	304,1	97,3	175,7
Hlohovec	140,0	322,6	408,6	236,6	135,4	248,3	182,8	234,4	312,5	323,3
Piešťany	312,0	557,6	297,4	530,2	366,3	293,0	523,1	372,7	476,2	434,8
Senica	299,4	388,8	295,5	279,1	256,9	146,8	466,0	222,6	389,6	342,5
Skalica	371,8	467,1	424,6	296,1	321,8	275,9	182,8	133,9	334,8	230,9
Trnava	180,3	222,2	205,1	226,9	289,3	280,3	314,7	326,6	307,4	304,1
Trenčiansky kraj	222,4	239,0	216,9	267,1	221,4	228,7	271,3	288,7	288,7	150,4
Bánovce nad Bebravou	144,2	156,7	130,5	318,3	137,7	82,6	225,4	137,7	192,8	174,9
Ilava	338,2	464,0	256,0	357,1	210,5	210,5	87,0	467,7	356,3	140,6
Myjava	350,2	592,6	444,4	332,0	179,4	313,9	298,5	246,3	295,6	390,2
Nové Mesto nad Váhom	181,2	200,0	272,7	226,1	254,5	145,5	303,0	378,2	273,1	113,4
Partizánske	179,4	89,5	268,5	329,4	241,3	294,9	307,7	212,8	319,1	132,3
Považská Bystrica	288,6	256,0	99,6	224,9	281,9	381,4	309,5	405,9	184,5	198,9
Prievidza	177,1	164,2	268,7	206,6	229,1	268,6	291,9	278,6	297,8	101,4
Púchov	167,7	247,6	95,2	381,0	267,5	267,5	267,6	209,4	471,2	151,5
Trenčín	221,2	208,1	189,2	241,5	174,4	135,7	299,8	229,8	262,6	150,0
Nitriansky kraj	195,4	239,2	224,8	275,6	266,4	204,6	265,8	230,5	271,5	304,8
Komárno	247,0	342,6	305,6	679,5	577,3	348,6	520,3	522,0	707,7	506,6
Levice	49,6	337,3	354,1	198,2	247,0	173,8	196,3	153,4	235,2	373,1
Nitra	265,5	253,3	190,0	188,0	159,7	133,1	205,6	175,1	218,8	330,1
Nové Zámky	209,9	174,9	133,0	185,3	183,9	183,9	245,1	209,4	150,8	213,5
Šaľa	237,7	229,4	191,2	118,3	265,8	122,7	273,3	195,7	176,1	146,1
Topoľčany	110,8	40,5	162,2	246,0	247,3	340,0	272,0	185,2	185,2	281,0
Zlaté Moravce	259,5	223,3	248,1	382,8	296,3	172,8	178,6	144,5	202,3	30,9
Žilinský kraj	249,5	244,6	218,9	262,0	237,8	239,0	294,5	268,0	249,5	252,9
Bytča	211,8	418,8	235,6	285,7	246,6	164,4	376,8	246,9	246,9	393,9
Čadca	96,5	164,6	107,0	183,0	184,4	184,4	199,2	204,5	185,0	173,3
Dolný Kubín	121,2	178,9	218,7	187,9	110,4	176,6	146,0	287,1	95,7	280,4
Kysucké Nové Mesto	220,8	331,8	237,0	195,5	233,8	207,8	163,9	319,5	191,7	224,7
Liptovský Mikuláš	227,0	294,9	282,1	302,2	446,0	417,3	178,0	519,7	519,7	384,0
Martin	382,7	255,8	211,3	332,6	164,1	229,8	449,6	240,5	263,5	88,5
Námestovo	194,8	241,0	200,8	232,1	282,8	282,8	313,2	192,7	215,4	89,2

VÝVOJ POČTU ŽIVONARODENÝCH DETÍ S VRODENOU CHYBOU NA 10 000 ŽIVONARODENÝCH DETÍ PODĽA ÚZEMIA TRVALÉHO BYDLISKA MATKY V ROKOCH 1996 – 2005

DEVELOPMENT OF NUMBER OF LIVE-BORN CHILDREN WITH A CONGENITAL DEFECT ON 10 000 OF LIVE-BORN CHILDREN ACCORDING TO A PERMANENT RESIDENCE OF THE MOTHER IN YEARS 1996 – 2005

Tabuľka 1

2/2

Territory	Year									
	1996	1997	1998	1999	2000	2001	2002	2003	2004	2005
Ružomberok	269,9	222,9	270,7	252,4	191,4	207,3	275,7	304,1	250,4	148,3
Turčianske Teplice	270,3	261,4	261,4	204,1	243,9	243,9	80,0	–	75,2	230,8
Tvrdošín	180,8	256,9	237,2	369,6	86,2	194,0	313,9	138,6	254,0	176,6
Žilina	381,9	236,4	248,2	285,2	296,5	246,1	374,6	303,5	261,1	486,3
Banskobystrický kraj	232,8	198,1	219,6	197,8	209,5	182,8	198,8	169,8	150,0	164,1
Banská Bystrica	64,5	61,0	203,3	207,4	238,9	170,6	132,7	142,2	130,3	111,5
Banská Štiavnica	57,8	64,5	129,0	0,0	65,8	197,4	135,1	–	246,9	180,7
Brezno	182,3	156,5	99,6	207,4	155,8	93,5	183,6	50,5	151,5	145,9
Detva	158,3	121,6	273,6	58,1	102,4	136,5	147,1	109,9	219,8	166,1
Krupina	36,2	66,0	198,0	195,3	301,9	226,4	186,9	483,9	161,3	285,7
Lučenec	369,9	395,9	332,1	222,2	224,4	238,4	230,9	206,6	13,8	167,5
Poltár	337,6	153,3	229,9	0,0	300,4	214,6	257,7	48,3	–	103,6
Revúca	313,1	210,3	76,5	235,5	368,7	276,5	204,9	156,3	290,2	167,0
Rimavská Sobota	370,7	265,2	359,8	286,6	268,8	247,3	320,9	240,0	270,2	314,4
Veľký Krtíš	286,8	304,9	223,6	239,1	200,9	178,6	128,9	189,7	189,7	68,2
Zvolen	220,6	205,0	142,0	123,6	193,2	161,0	170,6	128,7	55,1	78,9
Žarnovica	192,3	241,4	172,4	212,0	0,0	141,8	164,6	316,7	135,7	211,0
Žiar nad Hronom	251,0	110,4	220,8	215,5	109,9	65,9	165,7	116,6	69,9	93,5
Prešovský kraj	356,2	272,4	238,6	273,9	286,0	331,9	370,3	363,0	337,5	356,6
Bardejov	188,9	118,9	192,1	140,7	191,7	170,4	102,4	169,9	124,6	89,3
Humenné	398,1	398,4	274,7	386,9	242,2	313,4	319,3	372,8	145,9	320,9
Kežmarok	208,1	220,2	201,8	274,1	296,6	370,7	453,2	352,3	322,9	387,5
Levoča	309,3	383,8	362,5	281,4	288,9	400,0	220,0	300,8	451,1	572,8
Medzilaborce	445,9	378,8	227,3	620,6	270,3	180,2	610,7	608,7	87,0	307,7
Poprad	163,6	167,9	142,7	216,1	248,1	355,7	349,6	301,3	470,8	369,7
Prešov	599,1	336,1	202,6	271,4	235,5	291,9	257,1	277,3	288,4	386,6
Sabinov	416,7	334,1	267,3	238,4	251,4	320,0	285,7	172,4	295,6	298,1
Snina	405,4	433,8	303,7	405,7	329,4	352,9	512,8	446,2	524,9	448,2
Stará Ľubovňa	315,5	231,5	138,9	185,6	476,2	568,8	740,2	662,0	507,0	535,2
Stropkov	146,5	76,0	190,1	246,9	259,3	481,5	447,8	436,7	218,3	297,0
Svidník	343,2	135,1	360,4	193,4	329,1	75,9	357,1	328,4	328,4	220,1
Vranov nad Topľou	388,1	335,4	406,0	429,9	388,5	370,0	570,6	645,8	455,8	368,0
Košický kraj	233,2	223,5	217,4	222,6	221,4	232,3	226,5	226,0	253,1	225,3
Gelnica	192,3	211,4	296,0	324,8	223,9	298,5	392,7	495,0	396,0	277,1
Košice I	200,8	148,1	123,5	265,6	159,4	275,4	62,4	175,4	190,1	224,4
Košice II	337,2	181,4	117,4	141,6	121,4	279,1	155,4	159,5	147,2	144,2
Košice III	188,1	209,1	278,7	190,5	197,4	164,5	198,0	222,9	286,6	220,8
Košice IV	202,8	173,9	144,9	133,1	142,1	142,1	172,1	270,7	304,6	278,7
Košice-okolie	257,9	299,6	206,4	241,3	164,0	164,0	181,2	206,5	220,2	221,8
Michalovce	325,2	266,0	212,8	248,5	319,8	225,3	260,6	185,8	323,1	167,3
Rožňava	163,9	226,4	386,2	171,5	266,3	239,7	446,4	401,3	288,9	476,9
Sobrance	116,7	325,2	122,0	202,4	114,5	114,5	177,0	148,5	198,0	372,1
Spišská Nová Ves	210,4	181,9	251,9	224,6	313,3	313,3	259,2	256,8	264,8	145,1
Trebišov	184,9	228,6	243,4	245,1	224,9	241,0	208,7	148,3	226,4	240,3

HLÁSENÉ VRODENÉ CHYBY PODĽA ÚZEMIA TRVALÉHO BYDLISKA MATKY

REPORTED CONGENITAL DEFECTS ACCORDING TO TERRITORIES OF PERMANENT RESIDENCE OF THE MOTHER

Tabuľka 2

1/2

Územie	Spolu	v tom		
		živonarodené deti	mŕtvonarodené deti	UPT z dôvodu prenatálne zistenej vrodenej chyby plodu
Slovenská republika	1 422	1 377	12	33
Bratislavský kraj	133	130	2	1
Bratislava I	4	3	1	–
Bratislava II	17	17	–	–
Bratislava III	12	12	–	–
Bratislava IV	27	26	–	1
Bratislava V	35	35	–	–
Malacky	15	14	1	–
Pezinok	15	15	–	–
Senec	8	8	–	–
Trnavský kraj	158	153	3	2
Dunajská Streda	39	37	2	–
Galanta	15	14	–	1
Hlohovec	14	14	–	–
Piešťany	23	23	–	–
Senica	20	20	–	–
Skalica	11	10	–	1
Trnava	36	35	1	–
Trenčiansky kraj	78	76	–	2
Bánovce nad Bebravou	6	6	–	–
Ilava	9	7	–	2
Myjava	8	8	–	–
Nové Mesto nad Váhom	6	6	–	–
Partizánske	5	5	–	–
Považská Bystrica	11	11	–	–
Prievidza	11	11	–	–
Púchov	7	7	–	–
Trenčín	15	15	–	–
Nitriansky kraj	181	180	1	–
Komárno	46	46	–	–
Levice	36	36	–	–
Nitra	49	48	1	–
Nové Zámky	25	25	–	–
Šaľa	7	7	–	–
Topoľčany	17	17	–	–
Zlaté Moravce	1	1	–	–
Žilinský kraj	193	182	2	9
Bytča	13	13	–	–
Čadca	20	17	–	3
Dolný Kubín	12	12	–	–
Kysucké Nové Mesto	10	8	–	2
Liptovský Mikuláš	27	25	1	1
Martin	8	8	–	–
Námestovo	8	8	–	–

HLÁSENÉ VRODENÉ CHYBY PODĽA ÚZEMIA TRVALÉHO BYDLISKA MATKY

REPORTED CONGENITAL DEFECTS ACCORDING TO TERRITORIES OF PERMANENT RESIDENCE OF THE MOTHER

Tabuľka 2

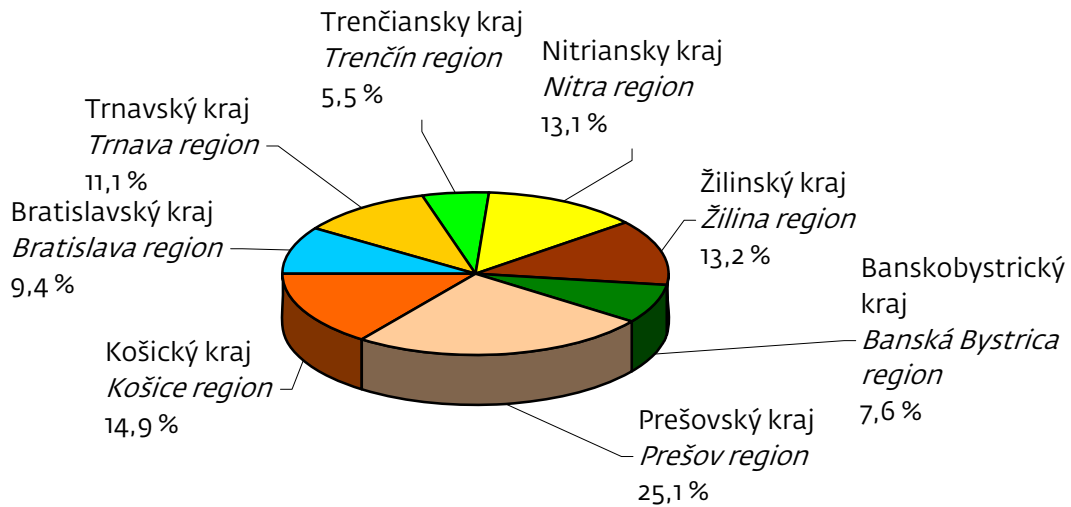
2/2

Territory	Total	included		
		live-born children	stillborn children	LIA from a reason of prenatally detected congenital defect of foetus
Ružomberok	9	9	–	–
Turčianske Teplice	3	3	–	–
Tvrdošín	8	8	–	–
Žilina	75	71	1	3
Banskobystrický kraj	111	105	–	6
Banská Bystrica	12	10	–	2
Banská Štiavnica	3	3	–	–
Brezno	11	9	–	2
Detva	5	5	–	–
Krupina	7	7	–	–
Lučenec	13	13	–	–
Poltár	2	2	–	–
Revúca	8	8	–	–
Rimavská Sobota	33	31	–	2
Veľký Krtíš	3	3	–	–
Zvolen	5	5	–	–
Žarnovica	5	5	–	–
Žiar nad Hronom	4	4	–	–
Prešovský kraj	355	346	4	5
Bardejov	8	8	–	–
Humenné	21	19	–	2
Kežmarok	42	42	–	–
Levoča	24	24	–	–
Medzilaborce	4	4	–	–
Poprad	44	44	–	–
Prešov	78	74	2	2
Sabinov	26	24	1	1
Snina	16	16	–	–
Stará Ľubovňa	38	38	–	–
Stropkov	6	6	–	–
Svidník	7	7	–	–
Vranov nad Topľou	41	40	1	–
Košický kraj	213	205	–	8
Gelnica	16	12	–	4
Košice I	16	16	–	–
Košice II	13	12	–	1
Košice III	7	7	–	–
Košice IV	17	16	–	1
Košice-okolie	35	33	–	2
Michalovce	22	22	–	–
Rožňava	30	30	–	–
Sobrance	8	8	–	–
Spišská Nová Ves	20	20	–	–
Trebišov	29	29	–	–

ŽIVONARODENÉ DETI S VRODENOU CHYBOU PODĽA TRVALÉHO BYDLISKA MATKY

LIVE-BORN CHILDREN WITH A CONGENITAL MALFORMATION ACCORDING TO PERMANENT RESIDENCE OF THE MOTHER

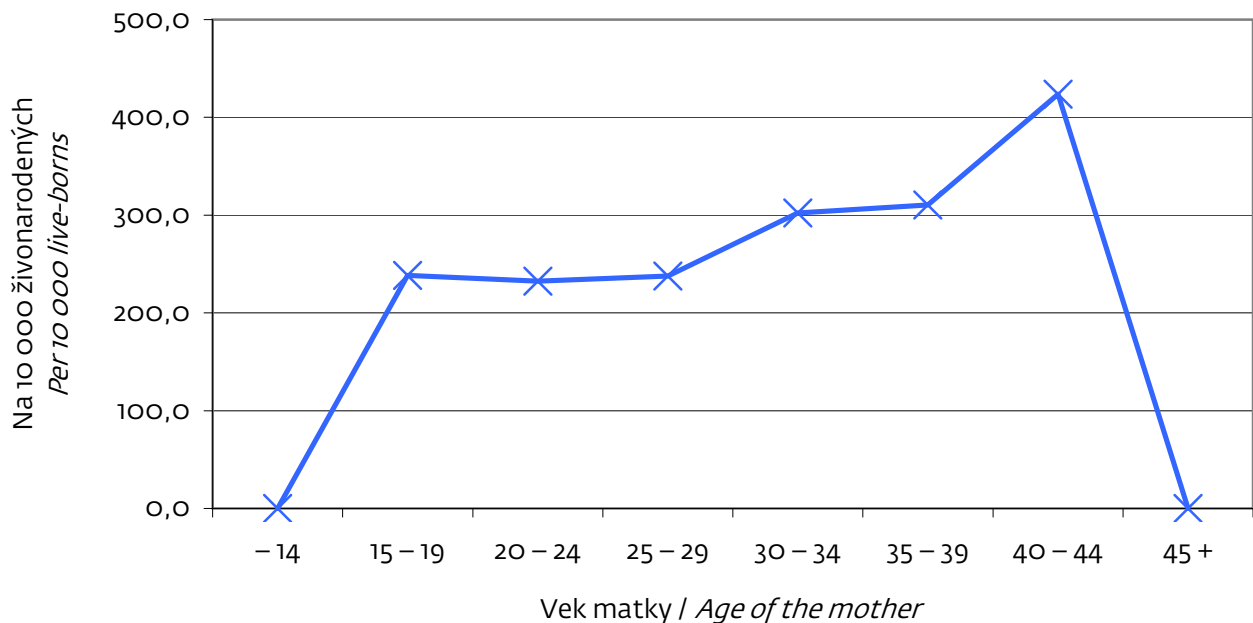
Graf 3



ŽIVONARODENÉ DETI S VRODENOU CHYBOU NA 10 000 ŽIVONARODENÝCH DETÍ PODĽA VEKU MATKY

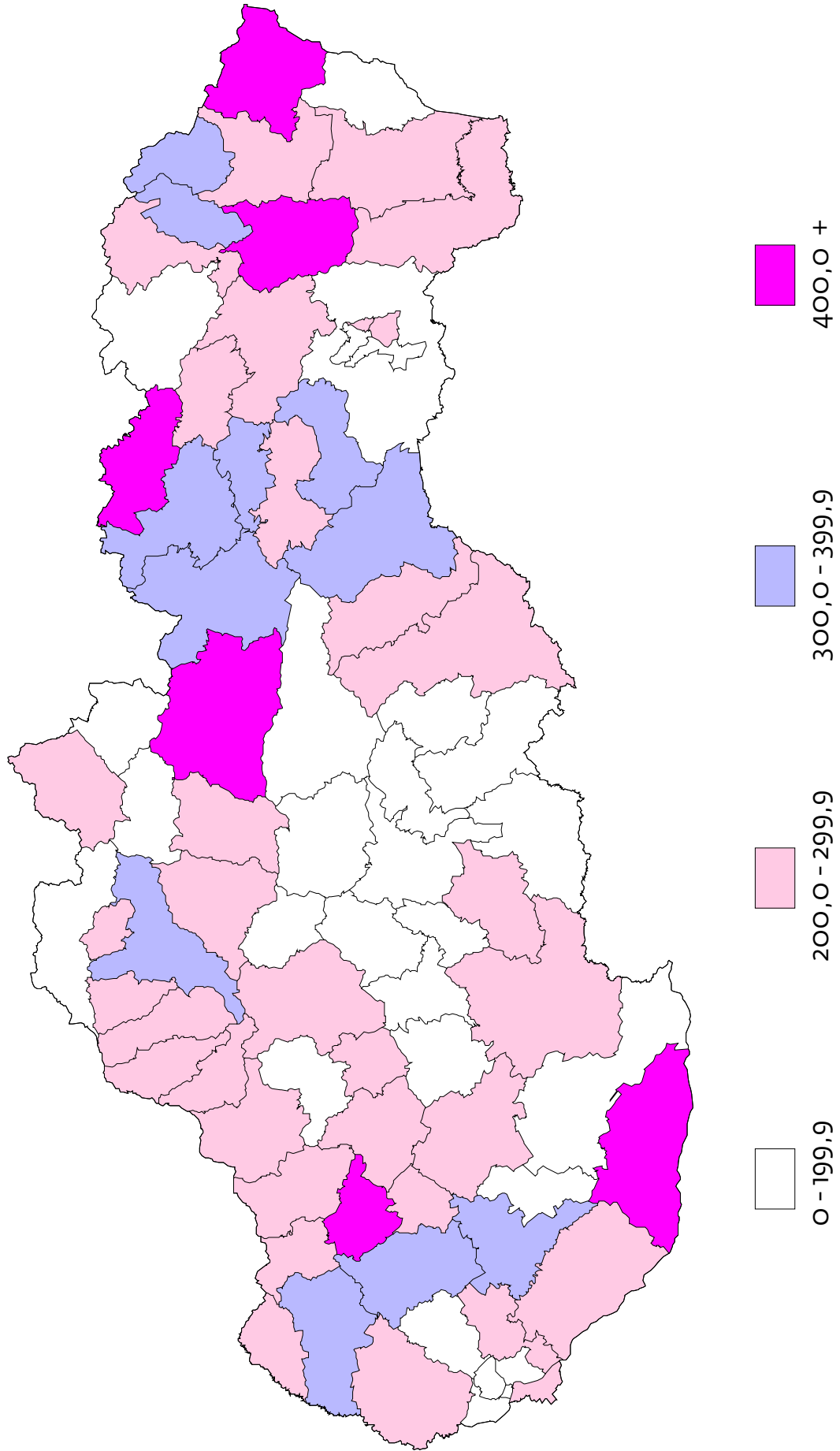
LIVE-BORN CHILDREN WITH A CONGENITAL MALFORMATION ON 10 000 LIVE-BORN CHILDREN ACCORDING TO AGE OF THE MOTHER

Graf 4



PRIEMERNÝ POČET ŽIVONARODENÝCH DETÍ S VRODENOU CHYBOU NA 10 000 ŽIVONARODENÝCH DETÍ ZA OBDOBIE 2000 – 2005
AVERAGE OF LIVE-BORN CHILDREN WITH A CONGENITAL MALFORMATION ON 10 000 LIVE-BORN CHILDREN IN PERIOD 2000 – 2005

Mapa 1

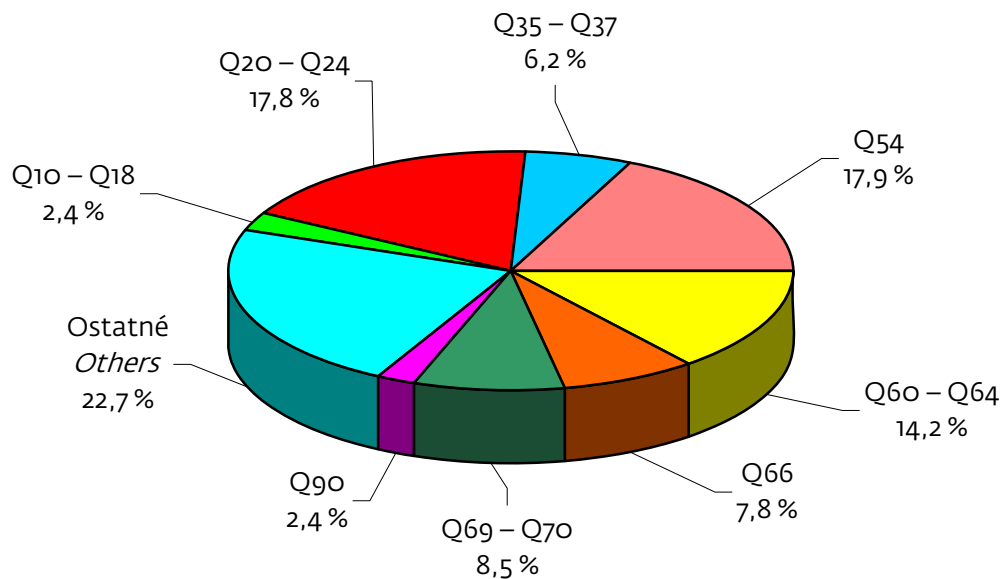


Congenital defects in SR 2005

ŠTRUKTÚRA VRODENÝCH CHÝB U ŽIVONARODENÝCH CHLAPCOV

STRUCTURE OF CONGENITAL MALFORMATIONS BY LIVE-BORN BOYS

Graf 5



ŠTRUKTÚRA VRODENÝCH CHÝB U ŽIVONARODENÝCH DIEVČAT

STRUCTURE OF CONGENITAL MALFORMATIONS BY LIVE-BORN GIRLS

Graf 6

